



Western Michigan University  
ScholarWorks at WMU

---

Legacy Scout Tickets from Pure Oil Company

---

8-20-2021

**MGRRE\_PureOilScoutTickets\_Everitt, Vernon\_1\_21129036420000**

MGRRE

*Western Michigan University*

Follow this and additional works at: <https://scholarworks.wmich.edu/pure>



Part of the Geology Commons

---

#### WMU ScholarWorks Citation

MGRRE, "MGRRE\_PureOilScoutTickets\_Everitt, Vernon\_1\_21129036420000" (2021). *Legacy Scout Tickets from Pure Oil Company*. 7964.

<https://scholarworks.wmich.edu/pure/7964>

This Document is brought to you for free and open access via ScholarWorks at WMU. It has been accepted for inclusion in Legacy Scout Tickets from Pure Oil Company by an authorized administrator of ScholarWorks at WMU. See the National Digital Catalogue - Science Base Catalogue for more collections submitted by MGRRE.



---

**MGRRE\_PureOilScoutTickets\_Everitt, Vernon\_1\_21129036420000**

API 21129036420000

Permit Number 3642

Lease Name Everitt, Vernon

Well Number 1

County Ogemaw

Township 23N

Range 02E

Section 13

2021 DEQ or Pure co\_name Gordon Oil Company

Pure Number 269

Latitude 44.37922

Longitude -84.14264

THE PURE OIL COMPANY

DATE November 5, 1936

LOCATION REPORT

No. 269

STATE Michigan COUNTY Ogemaw

DIST. Klacking TWP. Klacking SEC. 13

TOWN 23 N RANGE 2 E

WELL NO. 1 (SERIAL No. 269) FARM

PREC. Vernon Everitt

ACRES

NAME OF STREAM OR WATERS

QUADRANGLE SE-SW-SW  
SE SW SW

OPERATOR Gordon Oil Company

Map Klacking Township, Ogemaw County

Gordon Oil Co.

Klacking - Oge Co.

Feet from North Line of Farm

330 330 " " East " " "  
330 330 " " South " " "  
" " West " " "

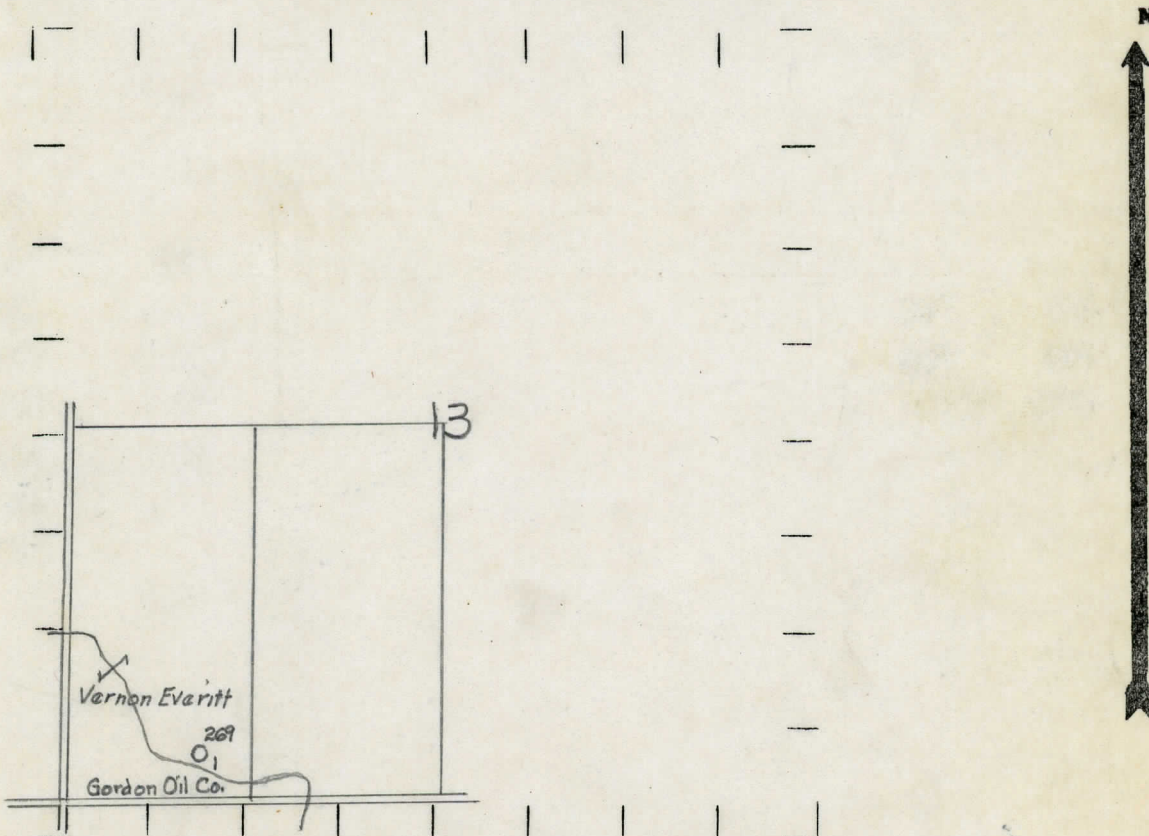
Feet from North Line of Section

" " East " " "  
330 330 " " South " " "  
990 990 " " West " " "

LEGEND

- |                  |                      |
|------------------|----------------------|
| ○ LOCATION       | ⊙ DRY HOLE           |
| ① RIG            | ⊙ DRY SHOWING OIL    |
| ⊕ DRILLING       | ⊙ DRY SHOWING GAS    |
| ⊙ GAS WELL       | ⊙ ABANDONED LOCATION |
| ● OIL WELL       | ⊙ ABANDONED GAS WELL |
| ⊙ SMALL OIL WELL | ⊙ ABANDONED OIL WELL |

NOTE: Below make tracing from map, (when no map is obtainable make sketch) showing farm, center of section, this location with measurements and also wells, dry holes, or other locations in the vicinity of this location.



REMARKS:

SIGNED

R. L. Yeager

Superintendent or Foreman.



## Michigan Producing Division

PRODUCTION RECORD

1st 24 hours natural **Dry Hole**

2nd 24 hours natural

Date of shot No. of quarts From to From to

Date of acid No. of gallons

1st 24 hours after acid shot

2nd 24 hours after acid shot

[illegible]

Signed Geo. H. Bell