



Western Michigan University
ScholarWorks at WMU

Legacy Scout Tickets from Pure Oil Company

8-20-2021

MGRRE_PureOilScoutTickets_Crawford, W S & E
H_4_21129038430000

MGRRE
Western Michigan University

Follow this and additional works at: <https://scholarworks.wmich.edu/pure>



Part of the Geology Commons

WMU ScholarWorks Citation

MGRRE, "MGRRE_PureOilScoutTickets_Crawford, W S & E H_4_21129038430000" (2021). *Legacy Scout Tickets from Pure Oil Company*. 7982.
<https://scholarworks.wmich.edu/pure/7982>

This Document is brought to you for free and open access via ScholarWorks at WMU. It has been accepted for inclusion in Legacy Scout Tickets from Pure Oil Company by an authorized administrator of ScholarWorks at WMU. See the National Digital Catalogue - Science Base Catalogue for more collections submitted by MGRRE.



MGRRE_PureOilScoutTickets_Crawford, W S & E H_4_21129038430000

API 21129038430000

Permit Number 3843

Lease Name Crawford, W S & E H

Well Number 4

County Ogemaw

Township 22N

Range 02E

Section 28

2021 DEQ or Pure co_name Muskegon Development Company

Pure Number 287

Latitude 44.2649001

Longitude -84.1862467

The Pure Oil Company
THE PURE OIL COMPANY

DATE February 4, 1937

LOCATION REPORT

No. 287

STATE Michigan COUNTY Ogemaw DIST. West Branch SEC 28 TOWN 22 N RANGE 25 E
WELL No. 44 (SERIAL No. 287) FARM W. S. & E. H. Crawford ACRES

NAME OF STREAM OR WATERS QUADRANGLE NE SE SE

OPERATOR Weber Oil Company MAP West Branch Township, Ogemaw County
Weber Oil Co. West Branch - Oge

Feet from North Line of Farm

330 330 " " East " " "

990 990 " " South " " "

" " West " " "

Feet from North Line of Section

330 330 " " East " " "

990 990 " " South " " "

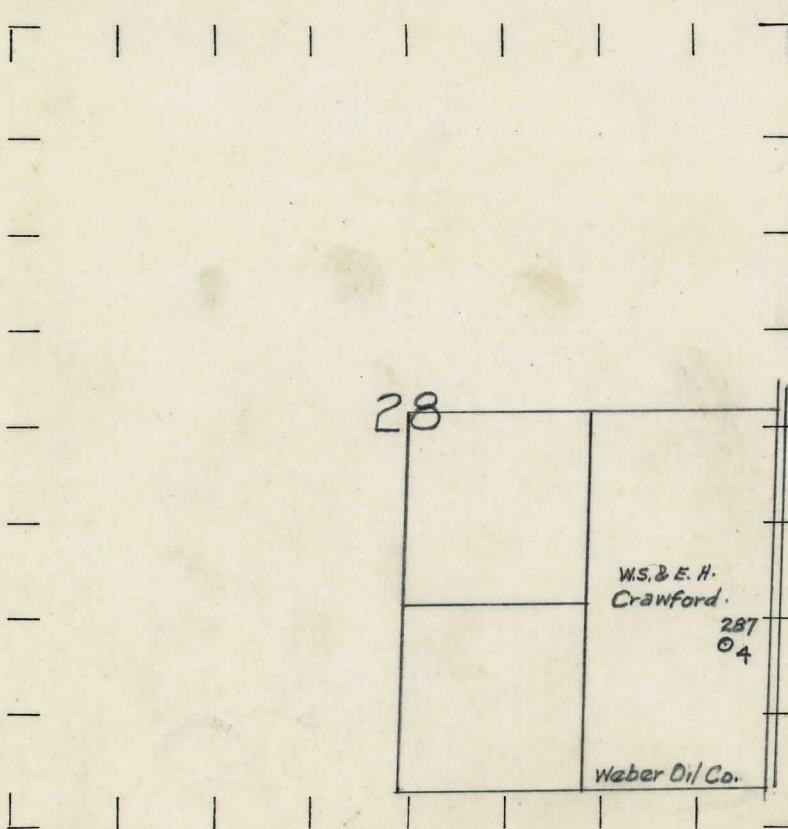
" " West " " "

Loc

LEGEND

- | | |
|------------------|----------------------|
| ○ LOCATION | ✦ DRY HOLE |
| ① RIG | ✦ DRY SHOWING OIL |
| ⊕ DRILLING | ✦ DRY SHOWING GAS |
| ⊗ GAS WELL | ⊗ ABANDONED LOCATION |
| ● OIL WELL | ⊗ ABANDONED GAS WELL |
| ⬮ SMALL OIL WELL | ⬮ ABANDONED OIL WELL |

NOTE: Below make tracing from map, (when no map is obtainable make sketch) showing farm, center of section, this location with measurements and also wells, dry holes, or other locations in the vicinity of this location. Make copy to keep for reference and send original to Columbus office.



REMARKS:

SIGNED

R. L. Yeager

Superintendent or Foreman.

COMPLETION RECORD OF WELLS DRILLED BY OTHER OPERATORS

Michigan Producing Division

Date April 22, 1937 No. 287
 State Michigan County Ogemaw Dist. West Branch Sec. 28 Twp. 22 N Rge. 2 E
 Well No. 4 (Serial No.) (County No.) 287 Farm Crawford Acres
 Operator Weber Oil Company Information secured by Scouting Department
 Date well started 3-1-37 Date well completed 4-10-37 Elevation 935.9

PRODUCTION RECORD

1st 24 hours natural Filled up 2000'
 2nd 24 hours natural
 Date of shot No. of quarts From to From to
 Date of acid 4-16-37 No. of gallons 1000
 1st 24 hours after shot 200 Barrels
 2nd 24 hours after acid shot

FORMATION AND CASING RECORD

Formation	Top	Bottom	Top Pay	Bottom Pay	Remarks	Casing	
						Size	Set At
<u>/Sambury</u>	<u>1180</u>	<u>1205</u>				<u>10"</u>	<u>347</u>
<u>Berea</u>	<u>1205</u>					<u>8 1/2"</u>	<u>515</u>
<u>Antrim</u>	<u>1305</u>					<u>6-5/8"</u>	<u>1800</u>
<u>Traverse</u>	<u>1743</u>				<u>H.F.S.W. 1760</u>	<u>5-3/16"</u>	<u>2542</u>
<u>Dumdee</u>	<u>2538</u>	<u>S.L.M.</u>	<u>2565</u>	<u>2575</u>			
			<u>2635</u>	<u>2640</u>			
			<u>2680</u>	<u>2685</u>			
<u>Total Depth</u>		<u>2707</u>					

Remarks

Signed Geo. H. Bell