



Western Michigan University
ScholarWorks at WMU

Legacy Scout Tickets from Pure Oil Company

8-20-2021

MGRRE_PureOilScoutTickets_County Farm_3_21129039210000

MGRRE

Western Michigan University

Follow this and additional works at: <https://scholarworks.wmich.edu/pure>



Part of the Geology Commons

WMU ScholarWorks Citation

MGRRE, "MGRRE_PureOilScoutTickets_County Farm_3_21129039210000" (2021). *Legacy Scout Tickets from Pure Oil Company*. 7988.

<https://scholarworks.wmich.edu/pure/7988>

This Document is brought to you for free and open access via ScholarWorks at WMU. It has been accepted for inclusion in Legacy Scout Tickets from Pure Oil Company by an authorized administrator of ScholarWorks at WMU. See the National Digital Catalogue - Science Base Catalogue for more collections submitted by MGRRE.



MGRRE_PureOilScoutTickets_County Farm_3_21129039210000

API 21129039210000

Permit Number 3921

Lease Name County Farm

Well Number 3

County Ogemaw

Township 22N

Range 02E

Section 20

2021 DEQ or Pure co_name Muskegon Development Company

Pure Number 293

Latitude 44.2848998

Longitude -84.2218889

THE PURE OIL COMPANY

Date June 22, 1946 Corrected LOCATION REPORT A.F.E. No. _____
Division Mich. Producing District _____ Lease County Farm
Acres _____ Lease No. _____ Elevation _____ Well No. 3 (Serial No. 293)
Quadrangle SE SW NW Sec. 20 Twp. 22 N Rge. 2 E Twp. West Branch
Survey _____ County Ogemaw State Michigan
Operator Del Fortney Map West Branch Township, Ogemaw County

Feet from North Line of Lease

" " East " " "

" " South " " "

" " West " " "

Feet from North Line of Section

" " East " " "

" " South " " "

" " West " " "

LEGEND

○ Location



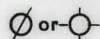
Gas Well



Oil Well



Gas - Distillate Well



Dry Hole



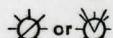
Dry Showing Oil



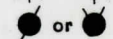
Dry Showing Gas



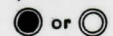
Abandoned Location



Abandoned Gas Well



Abandoned Oil Well



Input Well

See plat - Ogemaw #293.

N

Remarks: Change of operator. Scale _____

Submitted by Scouting Dept. Approved by _____ Division Manager

Approved by _____ Vice-President - General Manager

Date **March 11, 1937** LOCATION REPORT No. **293**
 STATE **Michigan** COUNTY **Ogemaw** DIST. **West Branch** SEC. **20** TOWN **22 N** RANGE **2 E**
 WELL No. **33** (SERIAL No. **293**) FARM **Ogemaw County Farm** ACRES
 NAME OF STREAM OR WATERS _____ QUADRANGLE **SE SW NW**

OPERATOR **Fortney Oil Company** Map **West Branch Township, Ogemaw County**
Fortney Oil Co. **West Branch - Oge. Co.**

Feet from North Line of Farm

330330 " " East " " "
275-275 " " South " " "
 " " West " " "

Feet from North Line of Section

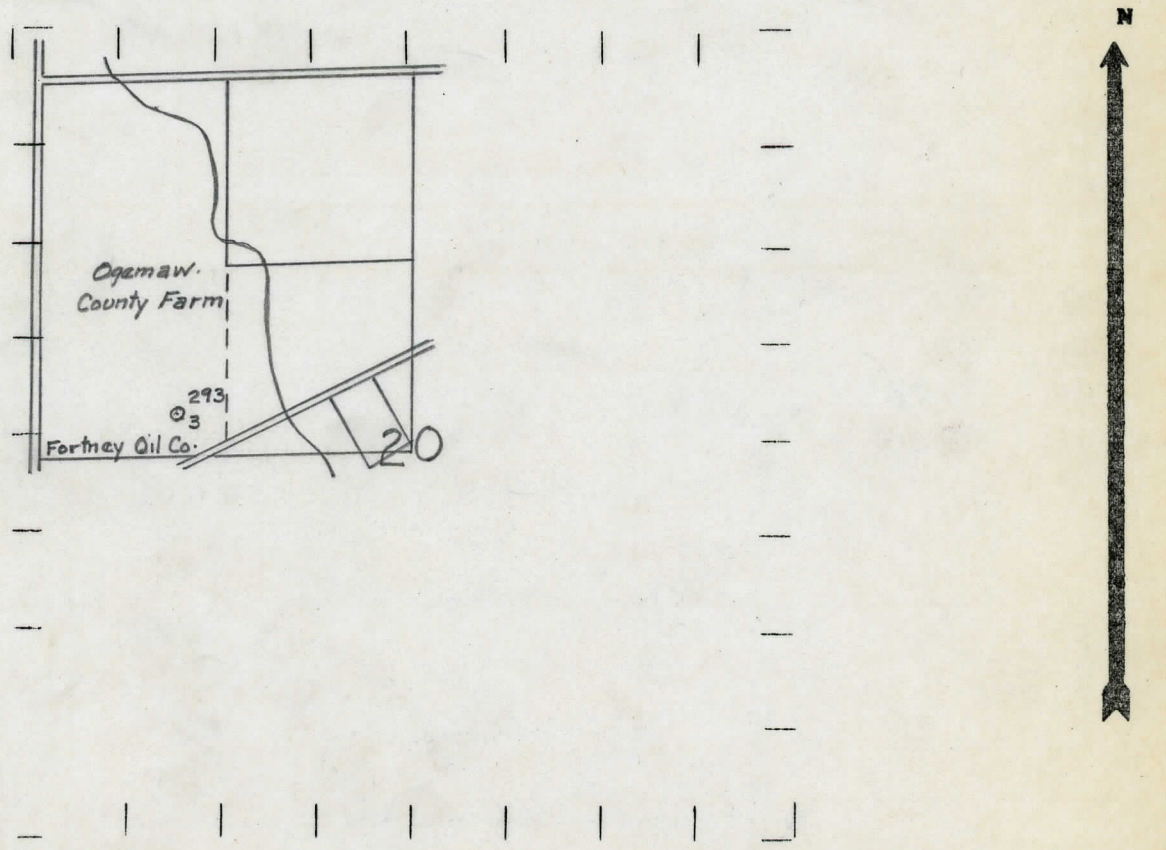
" " East " " "
275-275 " " South " **1/4** "
99990 " " West " " "

3-1

LEGEND

- | | |
|------------------|----------------------|
| ○ LOCATION | ⊙ DRY HOLE |
| ⊕ RIG | ⊙ DRY SHOWING OIL |
| ⊕ DRILLING | ⊙ DRY SHOWING GAS |
| ⊙ GAS WELL | ⊙ ABANDONED LOCATION |
| ● OIL WELL | ⊙ ABANDONED GAS WELL |
| ⊙ SMALL OIL WELL | ⊙ ABANDONED OIL WELL |

NOTE: Below make tracing from map, (when no map is obtainable make sketch) showing farm, center of section, this location with measurements and also wells, dry holes, or other locations in the vicinity of this location.



REMARKS:

SIGNED

R. L. Yeager
 Superintendent or Foreman.

Dean C. Shackelford