



Western Michigan University
ScholarWorks at WMU

Legacy Scout Tickets from Pure Oil Company

8-20-2021

MGRRE_PureOilScoutTickets_Estey, F_2_21129041570000

MGRRE

Western Michigan University

Follow this and additional works at: <https://scholarworks.wmich.edu/pure>



Part of the Geology Commons

WMU ScholarWorks Citation

MGRRE, "MGRRE_PureOilScoutTickets_Estey, F_2_21129041570000" (2021). *Legacy Scout Tickets from Pure Oil Company*. 8000.

<https://scholarworks.wmich.edu/pure/8000>

This Document is brought to you for free and open access via ScholarWorks at WMU. It has been accepted for inclusion in Legacy Scout Tickets from Pure Oil Company by an authorized administrator of ScholarWorks at WMU. See the National Digital Catalogue - Science Base Catalogue for more collections submitted by MGRRE.



MGRRE_PureOilScoutTickets_Estey, F_2_21129041570000

API 21129041570000

Permit Number 4157

Lease Name Estey, F

Well Number 2

County Ogemaw

Township 22N

Range 02E

Section 28

2021 DEQ or Pure co_name Marathon Oil Company

Pure Number 306

Latitude 44.26879

Longitude -84.20188

THE PURE OIL COMPANY
LOCATION REPORT

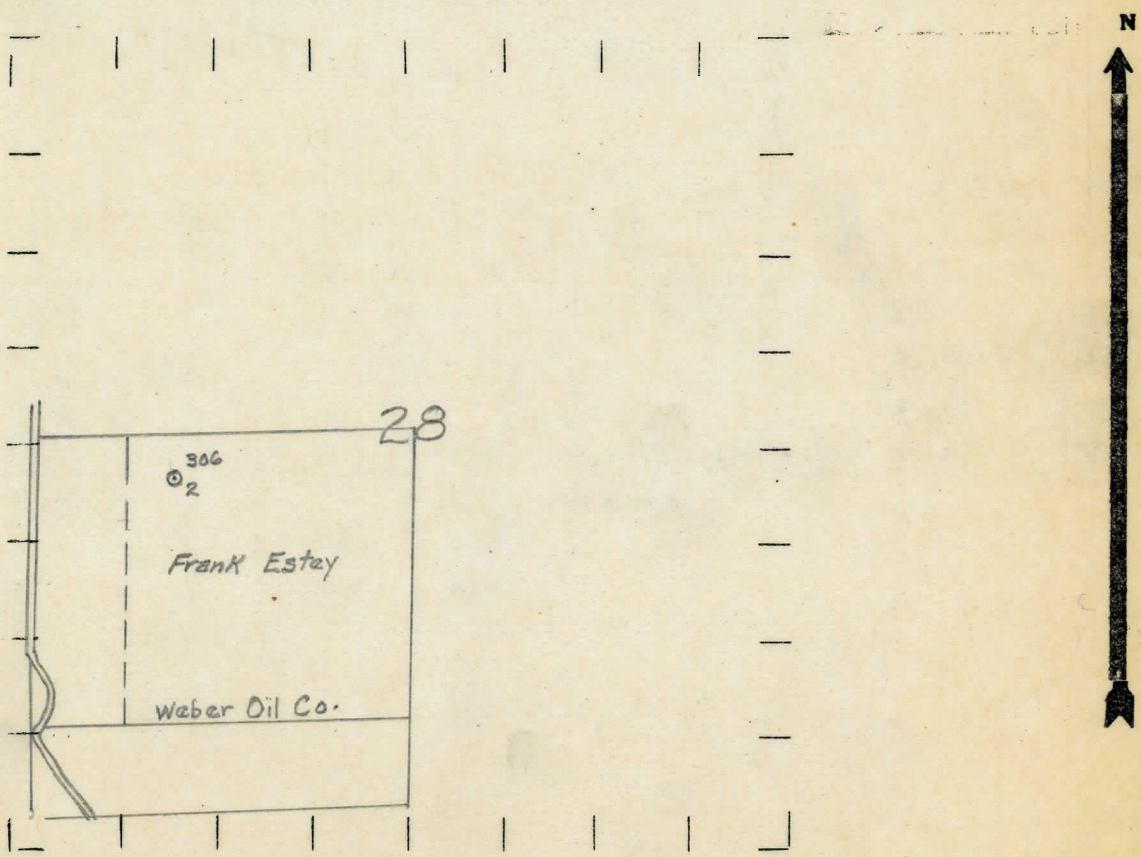
DATE May 28, 1937 No. 306
STATE Michigan COUNTY Ogemaw DIST. West Branch SEC. 28 TOWN 22 N RANGE 2 E
WELL No. 2 (SERIAL No. 306) FARM Frank Estey ACRES
NAME OF STREAM OR WATERS QUADRANGLE NE NW SW

OPERATOR Weber Oil Company Map West Branch Township, Ogemaw County
330 330 Feet from North Line of Farm West Branch - Oge.

" " East " " "
" " South " " "
990 990 " " West " " "
330 330 Feet from North Line of Section
" " East " " "
" " South " " "
990 990 " " West " " "

- LEGEND
- | | |
|------------------|----------------------|
| ○ LOCATION | ⊙ DRY HOLE |
| ① RIG | ⊙ DRY SHOWING OIL |
| ⊕ DRILLING | ⊙ DRY SHOWING GAS |
| ☀ GAS WELL | ⊙ ABANDONED LOCATION |
| ● OIL WELL | ☀ ABANDONED GAS WELL |
| ⬮ SMALL OIL WELL | ● ABANDONED OIL WELL |

NOTE: Below make tracing from map, (when no map is obtainable make sketch) showing farm, center of section, this location with measurements and also wells, dry holes, or other locations in the vicinity of this location.



REMARKS:

SIGNED R. L. Yager
Superintendent or Foreman.

PRODUCTION RECORD

2nd 24 hours after acid

Formation	Top	Bottom	Top Pay	Bottom Pay	Remarks	Casing	
						Size	Set
Sunbury	1178					10"	290
Berea	1200	1205				8-1/4"	508
Antrim	1291					6-5/8"	1786
Traverse	1740			1759	Show oil and water	6-5/16"	2554
Dundee	2540			2545	Show oil		
			2620	2630			
			2690	2700			
Total Depth		2710					

Signed D. C. Shackelford