



Western Michigan University
ScholarWorks at WMU

Legacy Scout Tickets from Pure Oil Company

8-20-2021

MGRRE_PureOilScoutTickets_Ellis W E_4_21129042300000

MGRRE

Western Michigan University

Follow this and additional works at: <https://scholarworks.wmich.edu/pure>



Part of the Geology Commons

WMU ScholarWorks Citation

MGRRE, "MGRRE_PureOilScoutTickets_Ellis W E_4_21129042300000" (2021). *Legacy Scout Tickets from Pure Oil Company*. 8003.

<https://scholarworks.wmich.edu/pure/8003>

This Document is brought to you for free and open access via ScholarWorks at WMU. It has been accepted for inclusion in Legacy Scout Tickets from Pure Oil Company by an authorized administrator of ScholarWorks at WMU. See the National Digital Catalogue - Science Base Catalogue for more collections submitted by MGRRE.



MGRRE_PureOilScoutTickets_Ellis W E_4_21129042300000

API 21129042300000

Permit Number 4230

Lease Name Ellis W E

Well Number 4

County Ogemaw

Township 22N

Range 01E

Section 14

2021 DEQ or Pure co_name Smith Petroleum Company

Pure Number 309

Latitude 44.29411

Longitude -84.26814

THE PURE OIL COMPANY

LOCATION REPORT

DATE February 21, 1941No. 309STATE Michigan COUNTY Ogemaw ~~DIST~~ TWP Ogemaw SEC. 14 TOWN 22 N RANGE 1 E
WELL No. 4 (SERIAL No. 309) FARM W. E. Ellis ACRESNAME OF STREAM OR WATERS _____ QUADRANGLE NE SE SEOPERATOR Smith Petroleum Company Map Ogemaw Township, Ogemaw County_____
Feet from North Line of Farm_____
" " East " " "_____
" " South " " "_____
" " West " " "_____
Feet from North Line of Section_____
" " East " " "_____
" " South " " "_____
" " West " " "

LEGEND

○ LOCATION

① RIG

⊕ DRILLING

☼ GAS WELL

● OIL WELL

● SMALL OIL WELL

⊙ DRY HOLE

⊙ DRY SHOWING OIL

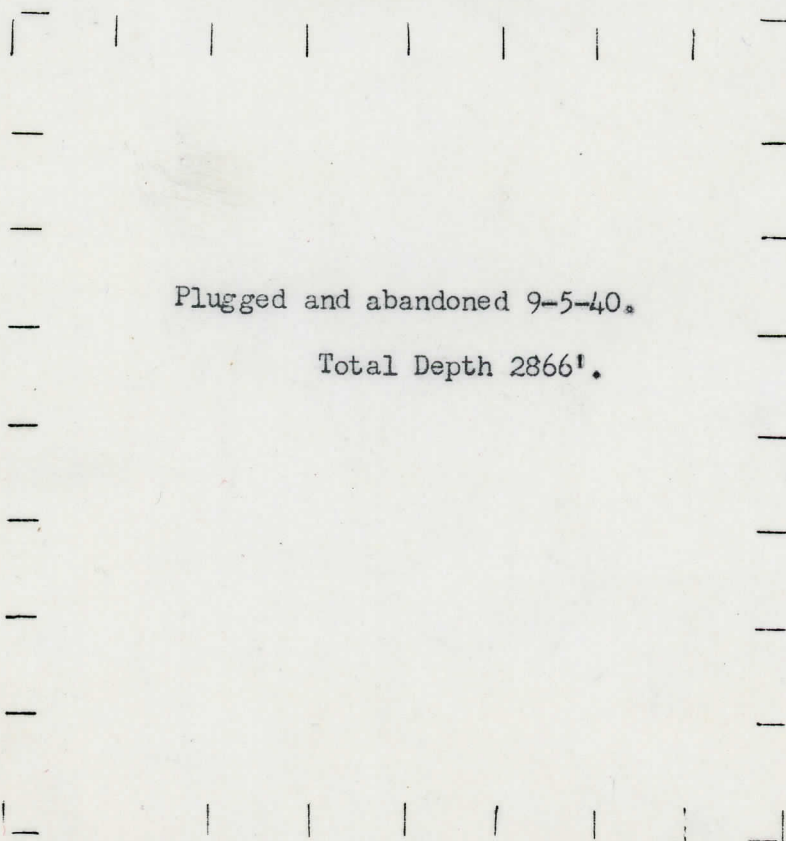
⊙ DRY SHOWING GAS

⊙ ABANDONED LOCATION

⊙ ABANDONED GAS WELL

⊙ ABANDONED OIL WELL

NOTE: Below make tracing from map. (when no map is obtainable make sketch) showing farm, center of section, this location with measurements and also wells, dry holes, or other locations in the vicinity of this location.



REMARKS:

SIGNED

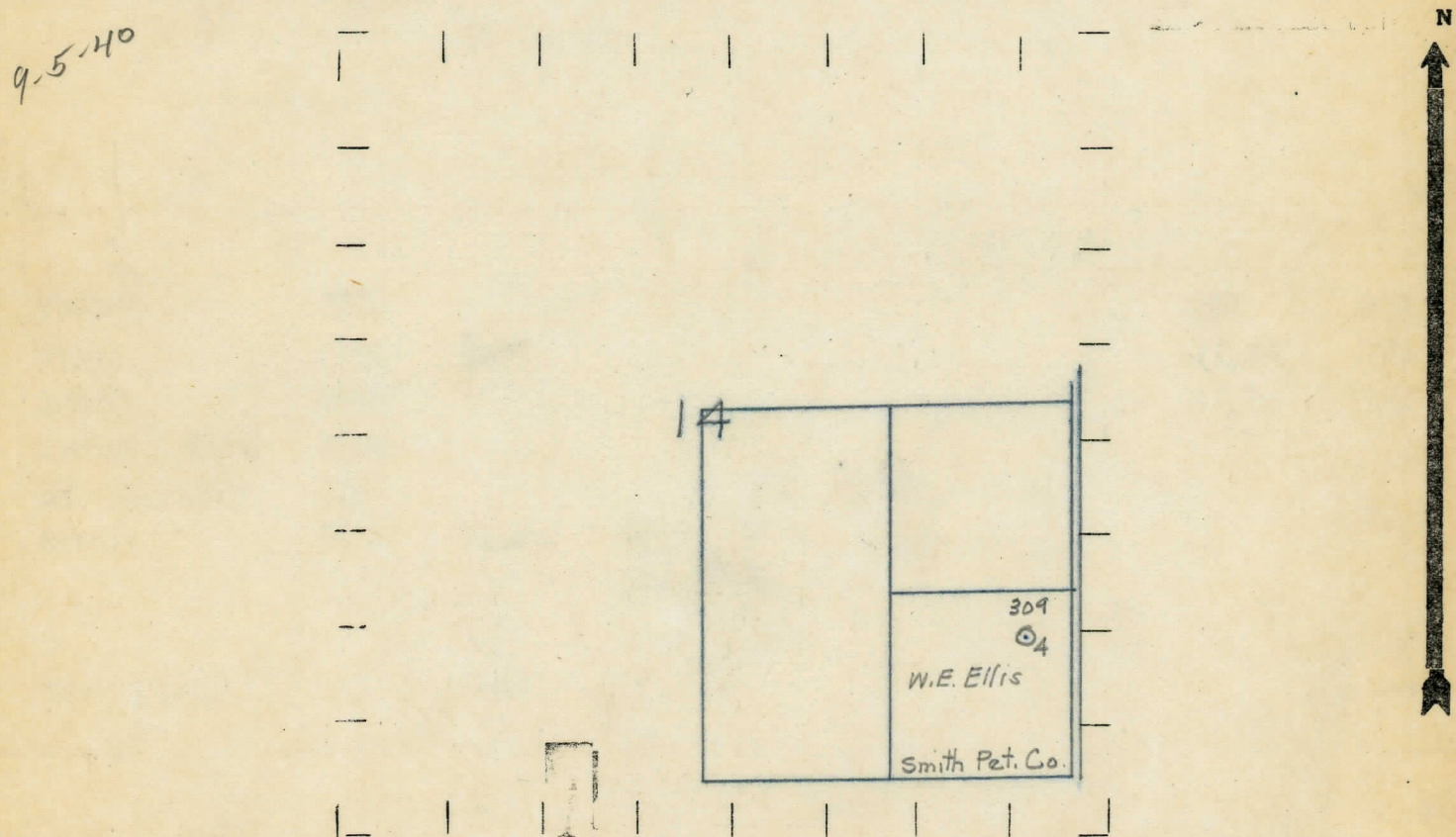
Superintendent or Foreman.

METT No. 1 (SERIAL No. 308) LVBW
STYLE NIGHTMAN CONNALLY OGEWSM
DATE 1907
LOCATION REPORT
No. 309
STATE Michigan COUNTY Ogemaw DIST. 09c
TWP. Ogemaw SEC. 14 TOWN 22 N RANGE 1 E
WELL No. 44 (SERIAL No. 309) FARM W. E. Ellis ACRES
NAME OF STREAM OR WATERS QUADRANGLE NE-SE-SE

OPERATOR Smith Petroleum Company Map Ogemaw Township, Ogemaw County
330 330 Feet from North Line of Farm
330 330 " " East " " "
" " South " " "
" " West " " "
Feet from North Line of Section
330 330 " " East " " "
990 990 " " South " " "
" " West " " "

LEGEND
O LOCATION
① RIG
⊕ DRILLING
☀ GAS WELL
● OIL WELL
⊙ SMALL OIL WELL
⊙ DRY HOLE
⊙ DRY SHOWING OIL
⊙ DRY SHOWING GAS
⊙ ABANDONED LOCATION
☀ ABANDONED GAS WELL
⊙ ABANDONED OIL WELL

NOTE: Below make tracing from map, (when no map is obtainable make sketch) showing farm, center of section, this location with measurements and also wells, dry holes, or other locations in the vicinity of this location.



REMARKS:

SIGNED R. L. Yeager
Superintendent or Foreman.

COMPLETION RECORD OF WELLS DRILLED BY OTHER OPERATORS

Michigan Producing Division

Date October 28, 1937 No. 309

State Michigan County Ogemaw Dist. Ogemaw Twp. 14 Sec. 22 N Rge. 1 E

Well No. 4 (Serial No.) (County No.) 309 Farm W. E. Ellis Acres

Operator Smith Petroleum Company by Information secured from Scouting Department

Date well started 6-19-37 Date well completed 9-23-37 Elevation 1075.5

PRODUCTION RECORD

1st 24 hours natural	10 Barrels				
2nd 24 hours natural					
Date of shot	No. of quarts	From	to	From	to
Date of acid	No. of gallons				
10-20-37	1000				
1st 24 hours after acid shot	40 Barrels				
2nd 24 hours after acid					

FORMATION AND CASING RECORD

Formation	Top	Bottom	Top Pay	Bottom Pay	Remarks	Casing	
						Size	Set At
Sunbury	1380					10"	400
Berea	1400	1440				8-1/4"	527
Antrim	1475					5-3/16"	2764
Traverse Form.	1937						
Traverse Lime	1950			1957	Salt water		
Dundee	2755	S.L.M.	2770	2779	Show oil		
			2775	2779			
			2850	2866			
Total Depth		2866					

Remarks

Signed **D. C. Shackelford**