



Western Michigan University
ScholarWorks at WMU

Legacy Scout Tickets from Pure Oil Company

8-20-2021

MGRRE_PureOilScoutTickets_Ellis, W. E._2_21129042310000

MGRRE

Western Michigan University

Follow this and additional works at: <https://scholarworks.wmich.edu/pure>



Part of the Geology Commons

WMU ScholarWorks Citation

MGRRE, "MGRRE_PureOilScoutTickets_Ellis, W. E._2_21129042310000" (2021). *Legacy Scout Tickets from Pure Oil Company*. 8004.

<https://scholarworks.wmich.edu/pure/8004>

This Document is brought to you for free and open access via ScholarWorks at WMU. It has been accepted for inclusion in Legacy Scout Tickets from Pure Oil Company by an authorized administrator of ScholarWorks at WMU. See the National Digital Catalogue - Science Base Catalogue for more collections submitted by MGRRE.



MGRRE_PureOilScoutTickets_Ellis, W. E._2_21129042310000

API 21129042310000

Permit Number 4231

Lease Name Ellis, W. E.

Well Number 2

County Ogemaw

Township 22N

Range 01E

Section 14

2021 DEQ or Pure co_name Bachelder and Gallaher

Pure Number 310

Latitude 44.29221

Longitude -84.27062

THE PURE OIL COMPANY

LOCATION REPORT

DATE April 2, 1941DATE June 10, 1937No. 310
No. 310STATE Michigan COUNTY Ogemaw DIST. Ogemaw SEC. 14 TOWN 22 N RANGE 1 E
WELL No. 2 (SERIAL No. 310) FARM W. E. Ellis ACRESNAME OF STREAM OR WATERS _____ QUADRANGLE SW SE SEOPERATOR Bachelor and Gallaher Map Ogemaw Township, Ogemaw County

Feet from North Line of Farm

" " East " " "

" " South " " "

" " West " " "

Feet from North Line of Section

" " East " " "

" " South " " "

" " West " " "

LEGEND

○ LOCATION

① RIG

⊕ DRILLING

☼ GAS WELL

● OIL WELL

⬮ SMALL OIL WELL

⊙ DRY HOLE

⬮ DRY SHOWING OIL

☼ DRY SHOWING GAS

⊙ ABANDONED LOCATION

☼ ABANDONED GAS WELL

⬮ ABANDONED OIL WELL

NOTE: Below make tracing from map. (when no map is obtainable make sketch) showing farm, center of section, this location with measurements and also wells, dry holes, or other locations in the vicinity of this location.

See plat - Serial No. 310.

REMARKS: Change of operator.

SIGNED

Superintendent or Foreman.

NAME OF STREAM OR WATERS _____ QUADRANGLE SW-SE-SE

WELL No. 22 (SERIAL No. 310) FARM _____ ACRES _____

STATE Michigan COUNTY Ogemaw DIST. Ogemaw SEC. 14 TOWN 22 N RANGE 1 E

W. E. Ellis

NAME OF STREAM OR WATERS _____ QUADRANGLE SW-SE-SE

OPERATOR Smith Petroleum Company Map Ogemaw Township, Ogemaw County

Smith Pet. Co.

Feet from North Line of Farm

330 330 " " East " " "

330 330 " " South " " "

330 330 " " West " " "

Feet from North Line of Section

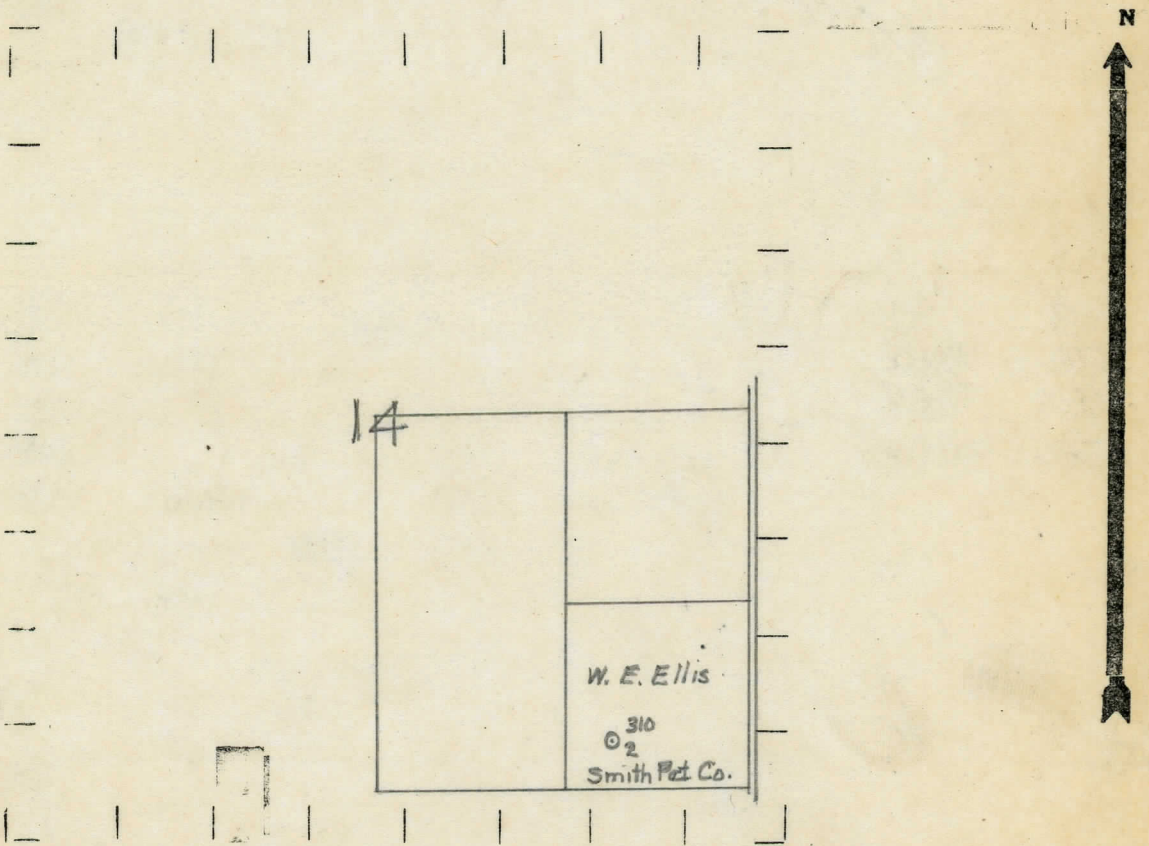
990 990 " " East " " "

330 330 " " South " " "

" " West " " "

- LEGEND**
- LOCATION
 - ① RIG
 - ⊕ DRILLING
 - ☀ GAS WELL
 - OIL WELL
 - ⬮ SMALL OIL WELL
 - ⊖ DRY HOLE
 - ⬮ DRY SHOWING OIL
 - ☀ DRY SHOWING GAS
 - ⊖ ABANDONED LOCATION
 - ☀ ABANDONED GAS WELL
 - ⬮ ABANDONED OIL WELL

NOTE: Below make tracing from map, (when no map is obtainable make sketch) showing farm, center of section, this location with measurements and also wells, dry holes, or other locations in the vicinity of this location.



REMARKS: _____

SIGNED _____

R. L. Younger
Superintendent of Foreman. \$

Signed D. C. Shackelford