



Western Michigan University
ScholarWorks at WMU

Legacy Scout Tickets from Pure Oil Company

8-20-2021

MGRRE_PureOilScoutTickets_Fisk_1_21129042390000

MGRRE

Western Michigan University

Follow this and additional works at: <https://scholarworks.wmich.edu/pure>



Part of the Geology Commons

WMU ScholarWorks Citation

MGRRE, "MGRRE_PureOilScoutTickets_Fisk_1_21129042390000" (2021). *Legacy Scout Tickets from Pure Oil Company*. 8005.

<https://scholarworks.wmich.edu/pure/8005>

This Document is brought to you for free and open access via ScholarWorks at WMU. It has been accepted for inclusion in Legacy Scout Tickets from Pure Oil Company by an authorized administrator of ScholarWorks at WMU. See the National Digital Catalogue - Science Base Catalogue for more collections submitted by MGRRE.



MGRRE_PureOilScoutTickets_Fisk_1_21129042390000

API 21129042390000

Permit Number 4239

Lease Name Fisk

Well Number 1

County Ogemaw

Township 22N

Range 02E

Section 28

2021 DEQ or Pure co_name Sappington, Henry

Pure Number 311

Latitude 44.27412

Longitude -84.18848

WELL REPORT - OUTSIDE OPERATIONS

SERIAL NO. 311-328STATE Michigan ~~PSH~~ CO. OgemawOPERATOR Henry SappingtonFARM Fisk WELL NO. 1-2TWP. West Branch S. 28 T. 22N R. 2E

LOC. _____

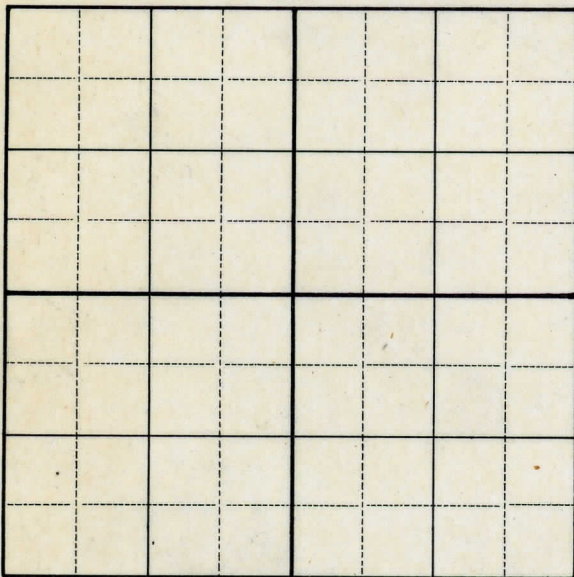
WILDCAT ☐ FIELD ☐ FIELD NAME _____

MAP NO. _____ CO-ORD. _____ ELEV. _____

STATUS _____

Operator changed from: Wade Stamy Co.

NORTH

DATE 6-25-51 SCOUT DRS

LOCATION REPORT

No. 311 2E

STATE Michigan COUNTY Ogemaw DIST. West Branch SEC. 28 TOWN 22 N RANGE 2 E

WELL No. 1 (SERIAL No. 311) FARM Mary Fisk ACRES

NAME OF STREAM OR WATERS QUADRANGLE SW-NE-NE

OPERATOR Wade-Stammy Company Map West Branch Township, Ogemaw County

Feet from North Line of Farm

320 330 " " East " " "

330 330 " " South " " "

330 330 " " West " " "

990 990 Feet from North Line of Section

990 990 " " East " " "

" " South " " "

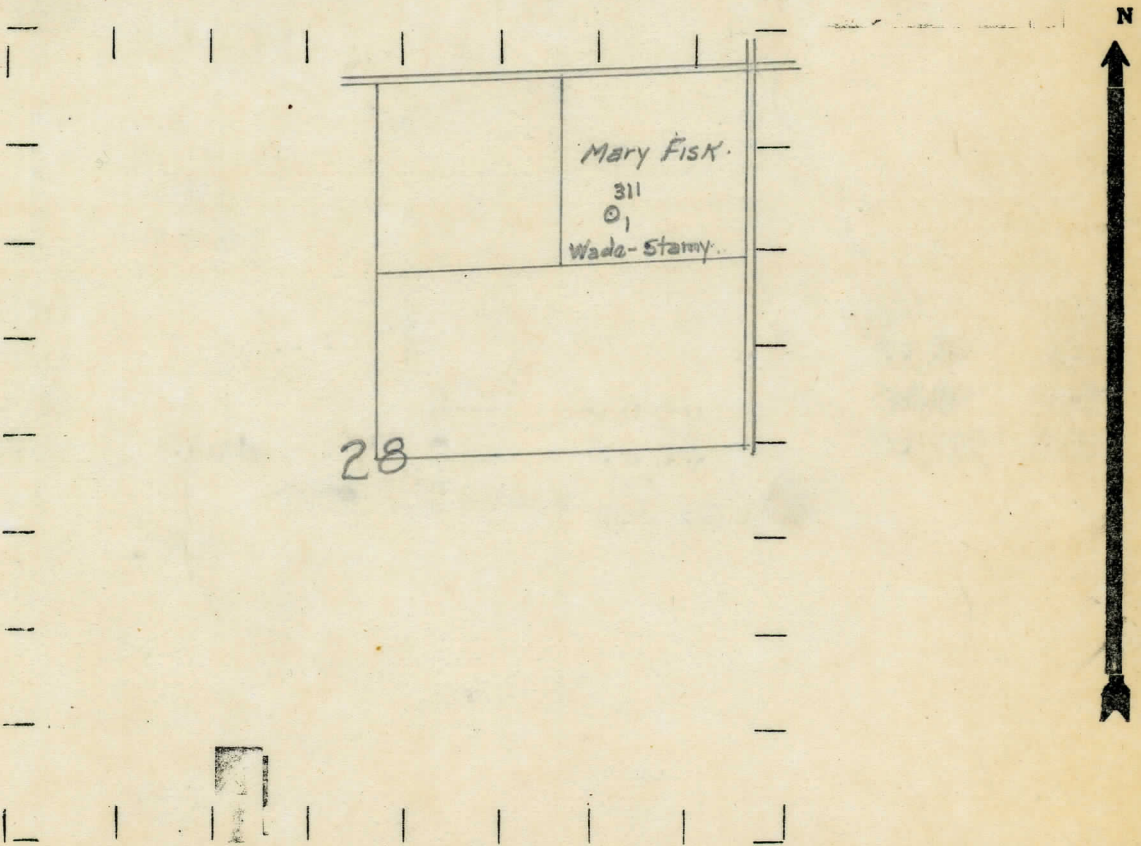
" " West " " "

Loc.

LEGEND

- O LOCATION
- ⊙ RIG
- ⊕ DRILLING
- ☼ GAS WELL
- OIL WELL
- ⬮ SMALL OIL WELL
- ⊙ DRY HOLE
- ⬮ DRY SHOWING OIL
- ⊙ DRY SHOWING GAS
- ⊙ ABANDONED LOCATION
- ☼ ABANDONED GAS WELL
- ⬮ ABANDONED OIL WELL

NOTE: Below make tracing from map, (when no map is obtainable make sketch) showing farm, center of section, this location with measurements and also wells, dry holes, or other locations in the vicinity of this location.



REMARKS:

SIGNED R. L. Yeager
Superintendent or Foreman.

