



Western Michigan University
ScholarWorks at WMU

Legacy Scout Tickets from Pure Oil Company

8-20-2021

**MGRRE_PureOilScoutTickets_BuckIngham
Fred_1_21129042660000**

MGRRE
Western Michigan University

Follow this and additional works at: <https://scholarworks.wmich.edu/pure>



Part of the Geology Commons

WMU ScholarWorks Citation

MGRRE, "MGRRE_PureOilScoutTickets_BuckIngham Fred_1_21129042660000" (2021). *Legacy Scout Tickets from Pure Oil Company*. 8007.
<https://scholarworks.wmich.edu/pure/8007>

This Document is brought to you for free and open access via ScholarWorks at WMU. It has been accepted for inclusion in Legacy Scout Tickets from Pure Oil Company by an authorized administrator of ScholarWorks at WMU. See the National Digital Catalogue - Science Base Catalogue for more collections submitted by MGRRE.



MGRRE_PureOilScoutTickets_BuckIngham Fred_1_21129042660000

API 21129042660000

Permit Number 4266

Lease Name BuckIngham Fred

Well Number 1

County Ogemaw

Township 22N

Range 02E

Section 35

2021 DEQ or Pure co_name Marathon Oil Company

Pure Number 313

Latitude 44.25432

Longitude -84.16462

THE PURE OIL COMPANY

DATE June 24, 1937

LOCATION REPORT

No. 313

STATE Michigan COUNTY Ogemaw DIST. West Branch SEC. 35 TOWN 22 N RANGE 2 E
WELL No. 1 (SERIAL No. 313) FARM Fred Buckingham ACRES

NAME OF STREAM OR WATERS QUADRANGLE NW-NW-SW

OPERATOR Weber Oil Company Map West Branch Township, Ogemaw County

330 330 Feet from North Line of Farm

" " East " " "

" " South " " "

330 330 " " West " " "

330 330 Feet from North Line of Section

" " East " " "

" " South " " "

330 330 " " West " " "

LEGEND

○ LOCATION

⊕ RIG

⊕ DRILLING

⊕ GAS WELL

● OIL WELL

⊕ SMALL OIL WELL

⊕ DRY HOLE

⊕ DRY SHOWING OIL

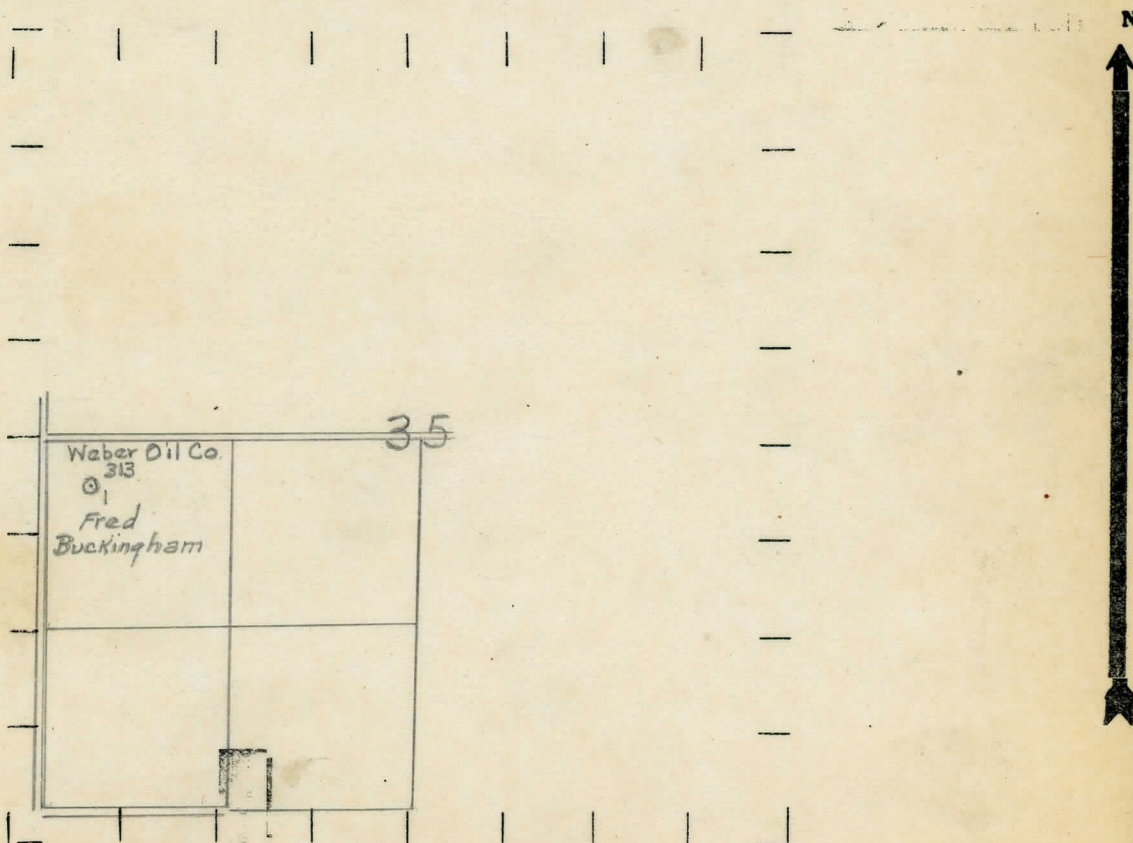
⊕ DRY SHOWING GAS

⊕ ABANDONED LOCATION

⊕ ABANDONED GAS WELL

⊕ ABANDONED OIL WELL

NOTE: Below make tracing from map, (when no map is obtainable make sketch) showing farm, center of section, this location with measurements and also wells, dry holes, or other locations in the vicinity of this location.



REMARKS:

SIGNED

Superintendent or Foreman.

