



Western Michigan University  
ScholarWorks at WMU

---

Legacy Scout Tickets from Pure Oil Company

---

8-20-2021

**MGRRE\_PureOilScoutTickets\_County Farm\_4\_21129042930000**

MGRRE

*Western Michigan University*

Follow this and additional works at: <https://scholarworks.wmich.edu/pure>



Part of the Geology Commons

---

#### WMU ScholarWorks Citation

MGRRE, "MGRRE\_PureOilScoutTickets\_County Farm\_4\_21129042930000" (2021). *Legacy Scout Tickets from Pure Oil Company*. 8009.

<https://scholarworks.wmich.edu/pure/8009>

This Document is brought to you for free and open access via ScholarWorks at WMU. It has been accepted for inclusion in Legacy Scout Tickets from Pure Oil Company by an authorized administrator of ScholarWorks at WMU. See the National Digital Catalogue - Science Base Catalogue for more collections submitted by MGRRE.



---

**MGRRE\_PureOilScoutTickets\_County Farm\_4\_21129042930000**

API 21129042930000

Permit Number 4293

Lease Name County Farm

Well Number 4

County Ogemaw

Township 22N

Range 02E

Section 20

2021 DEQ or Pure co\_name Muskegon Development Company

Pure Number 315

Latitude 44.286826

Longitude -84.2223272

THE PURE OIL COMPANY  
THE PURE OIL COMPANY

Date June 22, 1946 Corrected

## LOCATION REPORT

A.F.E. No. \_\_\_\_\_

Division Mich. Producing District \_\_\_\_\_ Lease County FarmAcres \_\_\_\_\_ Lease No. \_\_\_\_\_ Elevation \_\_\_\_\_ Well No. 4 (Serial No. 315)Quadrangle NE SW NW Sec. 20 Twp. 22 N Rge. 2 E ~~Dist.~~ West BranchSurvey \_\_\_\_\_ County Ogemaw State MichiganOperator Del Fortney Map West Branch Township, Ogemaw County

|       |                                 |
|-------|---------------------------------|
| _____ | Feet from North Line of Lease   |
| _____ | " " East " " "                  |
| _____ | " " South " " "                 |
| _____ | " " West " " "                  |
| _____ | Feet from North Line of Section |
| _____ | " " East " " "                  |
| _____ | " " South " " "                 |
| _____ | " " West " " "                  |

## LEGEND

○ Location



Gas Well



Dry Showing Gas



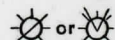
Oil Well



Abandoned Location



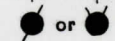
Gas - Distillate Well



Abandoned Gas Well



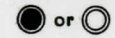
Dry Hole



Abandoned Oil Well



Dry Showing Oil



Input Well

See plat - Ogemaw #315.

N

Remarks: Change of operator.

Scale \_\_\_\_\_

Scouting Dept.

Submitted by \_\_\_\_\_

Approved by \_\_\_\_\_

Division Manager

Approved by \_\_\_\_\_

Vice-President - General Manager



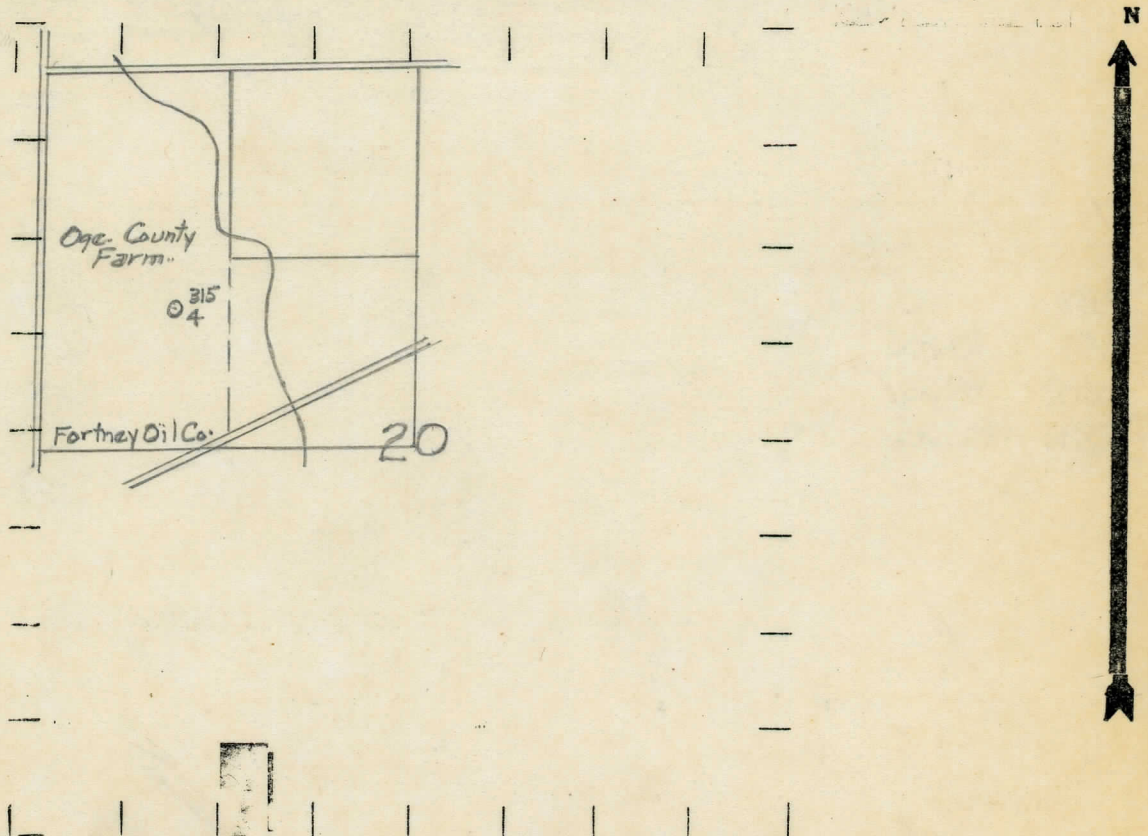
DATE June 55 1955 LOCATION REPORT No. 315  
 STATE Michigan COUNTY Ogemaw DIST. West Branch SEC. 20 TOWN 22 N RANGE 2 E  
 WELL No. 44 (SERIAL No. 315) FARM Ogemaw County Farm ACRES NE SW NW  
 NAME OF STREAM OR WATERS \_\_\_\_\_ QUADRANGLE NE SW NW  
 OPERATOR Fortney Oil Company Map West Branch Township, Ogemaw County  
Fortney Oil Co.  
West Branch - Oge.

Feet from North Line of Farm  
330 330 " " East " " "  
990 990 " " South " " "  
 " " West " " "  
 Feet from North Line of Section  
 " " East " " "  
990 990 " " South " 1 1/4 "  
990 990 " " West " " "

# LEGEND

- |                  |                      |
|------------------|----------------------|
| ○ LOCATION       | ⊙ DRY HOLE           |
| ① RIG            | ⊙ DRY SHOWING OIL    |
| ⊕ DRILLING       | ⊙ DRY SHOWING GAS    |
| ☼ GAS WELL       | ⊙ ABANDONED LOCATION |
| ● OIL WELL       | ☼ ABANDONED GAS WELL |
| ⊙ SMALL OIL WELL | ● ABANDONED OIL WELL |

NOTE: Below make tracing from map, (when no map is obtainable make sketch) showing farm, center of section, this location with measurements and also wells, dry holes, or other locations in the vicinity of this location.



REMARKS:

SIGNED

R. L. Yeager

Superintendent or Foreman.



Michigan Producing Division

Date August 26, 1937 No. 315  
State Michigan County Ogemaw Dist. West Branch Twp. 20 Sec. 22 N Rge. 2 E  
Well No. 4 (Serial No.) 315 Farm County Farm Acres             
Operator Fortney Oil Company by Scouting Department  
Information secured from             
Date well started 7-9-37 Date well completed 8-18-37 Elevation 970.5

# PRODUCTION RECORD

1st 24 hours natural Filled up 1200 ft.

2nd 24 hours natural

[illegible]

Date of acid **8-21-37** No. of gallons **1000**

|                              |             |
|------------------------------|-------------|
| 1st 24 hours after acid shot | 100 barrels |
|------------------------------|-------------|

2nd 24 hours after acid

# FORMATION AND CASING RECORD

| Formation   | Top  | Bottom | Top<br>Pay | Bottom<br>Pay | Remarks  | Casing  |      |
|-------------|------|--------|------------|---------------|----------|---------|------|
|             |      |        |            |               |          | Size    | Set  |
| Sunbury     | 1240 |        |            |               |          | 10"     | 229  |
| Berea       | 1270 | 1283   |            |               |          | 8-1/4"  | 577  |
| Antrim      | 1330 |        |            |               |          | 6-5/8"  | 1841 |
| Traverse    | 1783 |        |            |               |          | 5-3/16" | 2580 |
| Dundee      | 2580 |        |            | 2600          | Show oil |         |      |
|             |      |        | 2659       | 2670          |          |         |      |
|             |      |        | 2713       | 2730          |          |         |      |
| Total Depth |      | 2755   |            |               |          |         |      |

Remarks

Signed

D. C. Shackelford