



Western Michigan University
ScholarWorks at WMU

Legacy Scout Tickets from Pure Oil Company

8-20-2021

MGRRE_PureOilScoutTickets_Elsner, John et
al_1_21129043410000

MGRRE
Western Michigan University

Follow this and additional works at: <https://scholarworks.wmich.edu/pure>



Part of the Geology Commons

WMU ScholarWorks Citation

MGRRE, "MGRRE_PureOilScoutTickets_Elsner, John et al_1_21129043410000" (2021). *Legacy Scout Tickets from Pure Oil Company*. 8015.
<https://scholarworks.wmich.edu/pure/8015>

This Document is brought to you for free and open access via ScholarWorks at WMU. It has been accepted for inclusion in Legacy Scout Tickets from Pure Oil Company by an authorized administrator of ScholarWorks at WMU. See the National Digital Catalogue - Science Base Catalogue for more collections submitted by MGRRE.



MGRRE_PureOilScoutTickets_Elsner, John et al_1_21129043410000

API 21129043410000

Permit Number 4341

Lease Name Elsner, John et al

Well Number 1

County Ogemaw

Township 22N

Range 02E

Section 20

2021 DEQ or Pure co_name Crawford, Arthur E. dba The Lazy Oil Company

Pure Number 321

Latitude 44.28445

Longitude -84.21671

WELL REPORT - OUTSIDE OPERATIONS

SERIAL NO.

321

STATE Michigan ~~PSH~~ CO. Ogemaw

OPERATOR Dunnigan & Fothergill

FARM John Elsner, et al WELL NO. 1

TWP. West Branch S. 20 T. 22N R. 2E

~~SURVEY~~

LOC. SE SE NW

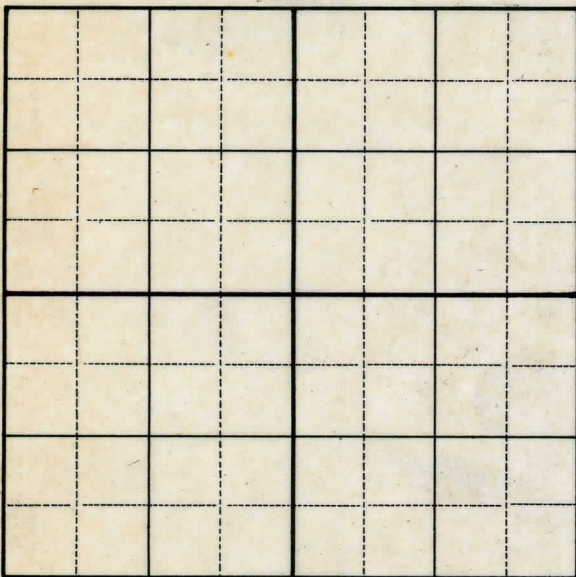
WILDCAT ☐ FIELD ☐ FIELD NAME _____

MAP NO. _____ CO-ORD. _____ ELEV. _____

STATUS Total Depth 2745'.

Plugged and Abandoned 12-31-48.

NORTH



DATE 2-1-49 SCOUT H. J. G.

DATE July 22, 1937

LOCATION REPORT

No. 321

STATE Michigan COUNTY Ogemaw DIST. West Branch TWP. West Branch SEC. 20 TOWN 22 N RANGE 2 E
WELL No. 1 (SERIAL No. 321) FARM John Elsner, et al. ACRES

NAME OF STREAM OR WATERS QUADRANGLE SE SE NW

OPERATOR Dunnigan & Fothergill Map West Branch Township, Ogemaw County
Dunnigan & Fothergill West Branch - Oge.

Feet from North Line of Farm
160 " " East " " "
185 " " South " " "
" " West " " "

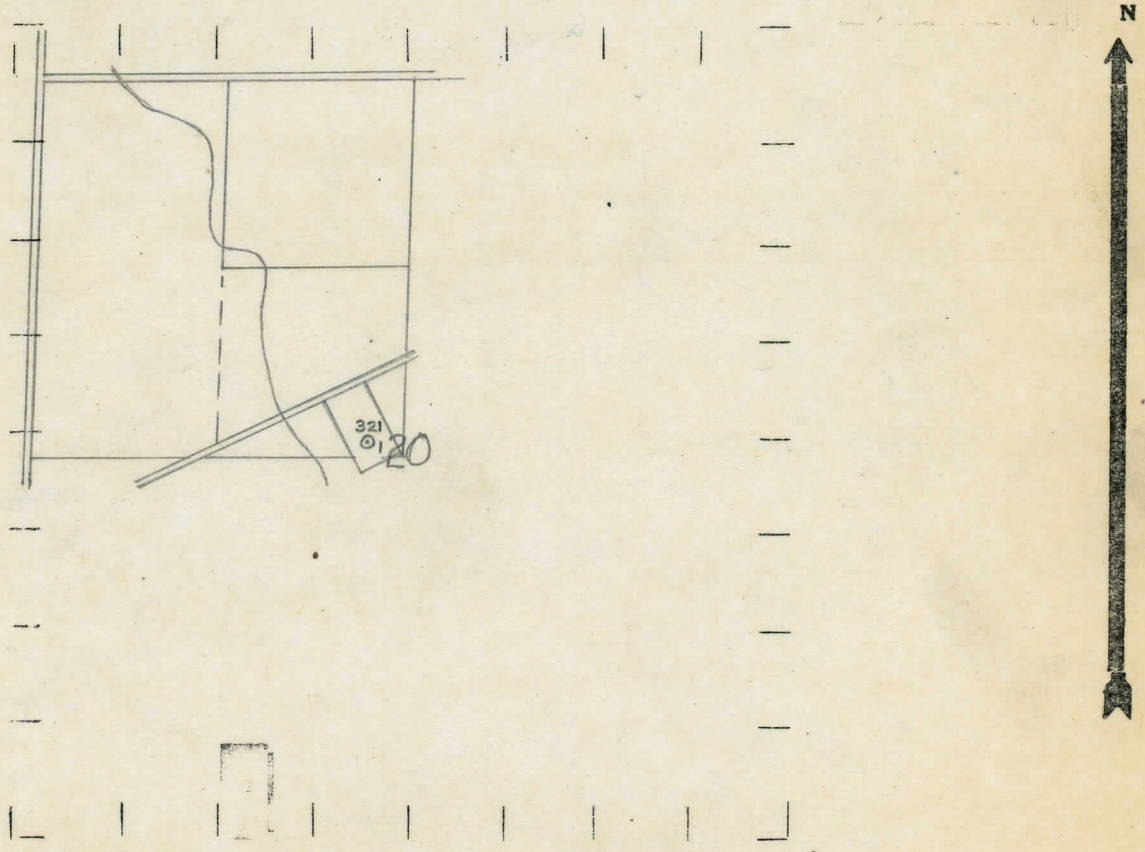
Feet from North Line of Section
225 " " East " 1/4 "
95 " " South " 1/4 "
" " West " " "

Loc

LEGEND

- | | |
|------------------|----------------------|
| ○ LOCATION | ⊙ DRY HOLE |
| ① RIG | ⊙ DRY SHOWING OIL |
| ⊕ DRILLING | ⊙ DRY SHOWING GAS |
| ⊙ GAS WELL | ⊙ ABANDONED LOCATION |
| ⊙ OIL WELL | ⊙ ABANDONED GAS WELL |
| ⊙ SMALL OIL WELL | ⊙ ABANDONED OIL WELL |

NOTE: Below make tracing from map, (when no map is obtainable make sketch) showing farm, center of section, this location with measurements and also wells, dry holes, or other locations in the vicinity of this location.



REMARKS:

SIGNED

Superintendent or Foreman.

