



Western Michigan University  
ScholarWorks at WMU

---

Legacy Scout Tickets from Pure Oil Company

---

8-20-2021

**MGRRE\_PureOilScoutTickets\_Fisher, James\_2\_21129045220000**

MGRRE

*Western Michigan University*

Follow this and additional works at: <https://scholarworks.wmich.edu/pure>



Part of the Geology Commons

---

#### WMU ScholarWorks Citation

MGRRE, "MGRRE\_PureOilScoutTickets\_Fisher, James\_2\_21129045220000" (2021). *Legacy Scout Tickets from Pure Oil Company*. 8026.

<https://scholarworks.wmich.edu/pure/8026>

This Document is brought to you for free and open access via ScholarWorks at WMU. It has been accepted for inclusion in Legacy Scout Tickets from Pure Oil Company by an authorized administrator of ScholarWorks at WMU. See the National Digital Catalogue - Science Base Catalogue for more collections submitted by MGRRE.



---

**MGRRE\_PureOilScoutTickets\_Fisher, James\_2\_21129045220000**

API 21129045220000

Permit Number 4522

Lease Name Fisher, James

Well Number 2

County Ogemaw

Township 22N

Range 02E

Section 35

2021 DEQ or Pure co\_name Marathon Oil Company

Pure Number 332

Latitude 44.25613

Longitude -84.1647

The Pure Oil Company  
THE PURE OIL COMPANY  
COMPLETION RECORD OF WELLS DRILLED BY OTHER OPERATORS

DATE Sept. 30, 1937

## LOCATION REPORT

No. 332

STATE Michigan COUNTY Ogemaw DIST. West Branch SEC. 35 TOWN 22 N RANGE 2 E  
WELL No. 22 (SERIAL No. 332) FARM James Fisher ACRES

NAME OF STREAM OR WATERS \_\_\_\_\_ QUADRANGLE SW-SW-NWOPERATOR Weber Oil Company Map West Branch Twp., Ogemaw County

Feet from North Line of Farm

330 330 " " East " " "  
330 330 " " South " " "  
330 330 " " West " " "

Feet from North Line of Section

330 330 " " East " " "  
330 330 " " South " " "  
330 330 " " West " " "

## LEGEND

O LOCATION

① RIG

⊕ DRILLING

☼ GAS WELL

● OIL WELL

● SMALL OIL WELL

⊙ DRY HOLE

⊙ DRY SHOWING OIL

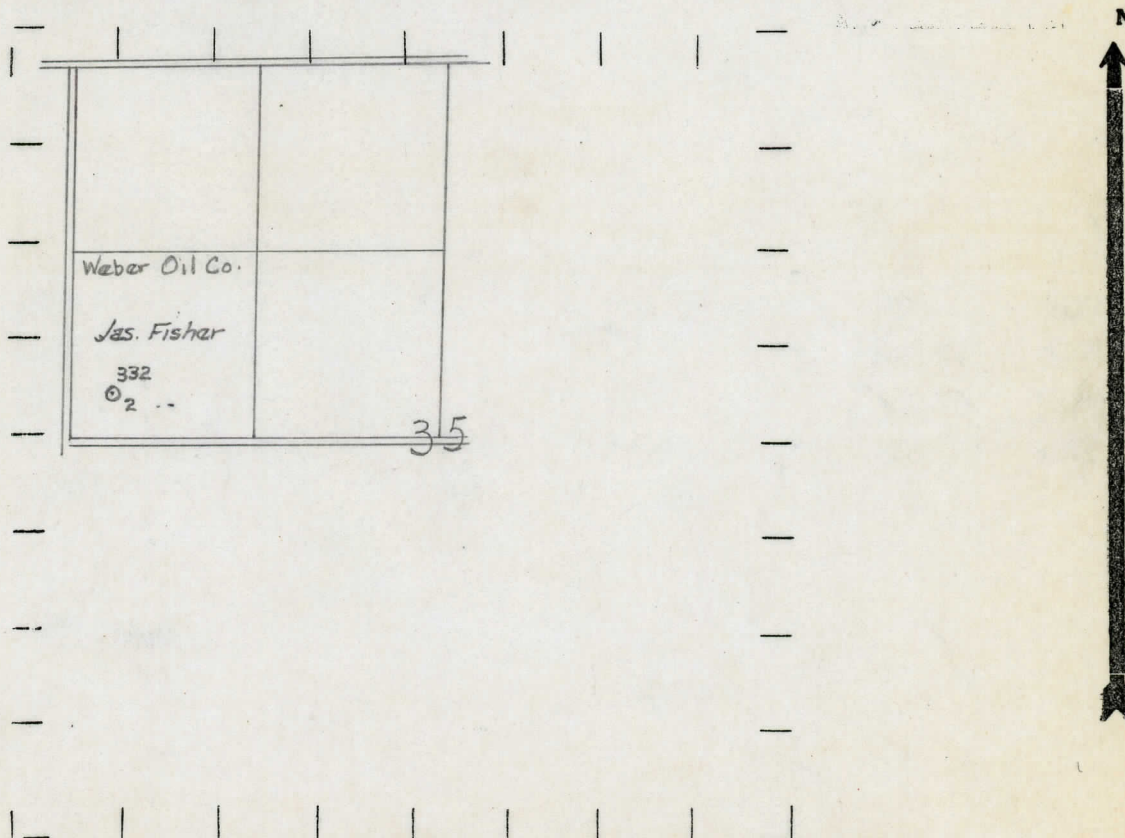
⊙ DRY SHOWING GAS

⊙ ABANDONED LOCATION

⊙ ABANDONED GAS WELL

⊙ ABANDONED OIL WELL

NOTE: Below make tracing from map, (when no map is obtainable make sketch) showing farm, center of section, this location with measurements and also wells, dry holes, or other locations in the vicinity of this location.



REMARKS:

SIGNED

R. L. Yeager  
Superintendent or Foreman.



No. 332

Operator **Weber Oil Company** ..... Information secured ~~from~~ <sup>by</sup> **Scouting Department**

Date well started 10-14-37 Date well completed 12-19-37 Elevation 876.3

1st 24 hours natural Filled up 600 ft.

[illegible]

Date of acid **12-29-37** No. of gallons **1500**

1st 24 hours after acid      **30 Barrels**

2nd 24 hours after acid

Formation	Top	Bottom	Top Pay	Bottom Pay	Remarks	Casing	
						Size	Set
Sunbury	1155					10"	189
Berea	1182	1187				8-1/4"	336
Antrim	1275					6-5/8"	1860
Traverse	1711	S.L.M.		1720	H.F.S.W.	5-3/16"	2493
Dundee	2490	"		2530	Show oil		
			2580	2590	" "		
			2630	2645			
Total Depth		2655					

Remarks

Signed **D. C. Shackelford**