



Western Michigan University
ScholarWorks at WMU

Legacy Scout Tickets from Pure Oil Company

8-20-2021

MGRRE_PureOilScoutTickets_Crow, Evan_5_21129046270000

MGRRE

Western Michigan University

Follow this and additional works at: <https://scholarworks.wmich.edu/pure>



Part of the Geology Commons

WMU ScholarWorks Citation

MGRRE, "MGRRE_PureOilScoutTickets_Crow, Evan_5_21129046270000" (2021). *Legacy Scout Tickets from Pure Oil Company*. 8032.

<https://scholarworks.wmich.edu/pure/8032>

This Document is brought to you for free and open access via ScholarWorks at WMU. It has been accepted for inclusion in Legacy Scout Tickets from Pure Oil Company by an authorized administrator of ScholarWorks at WMU. See the National Digital Catalogue - Science Base Catalogue for more collections submitted by MGRRE.



MGRRE_PureOilScoutTickets_Crow, Evan_5_21129046270000

API 21129046270000

Permit Number 4627

Lease Name Crow, Evan

Well Number 5

County Ogemaw

Township 22N

Range 02E

Section 36

2021 DEQ or Pure co_name New Consolidated Petroleum Corporation

Pure Number 338

Latitude 44.25812

Longitude -84.1344

WELL REPORT - OUTSIDE OPERATIONS

SERIAL NO. 338

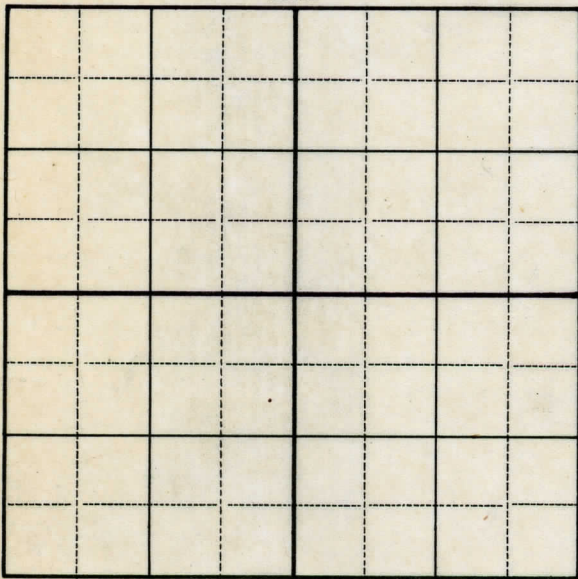
STATE Michigan ^{PSH} CO. Ogemaw
OPERATOR New Consolidated Petroleum Corp.
FARM Evan Crowe WELL NO. 5
TWP. West Branch S. 36 T. 22N R. 2E
LOC. NW SW NE

WILDCAT ☐ FIELD ☐ FIELD NAME _____

MAP NO. _____ CO-ORD. _____ ELEV. _____

STATUS Plugged and Abandoned 9-1-48.
Total Depth 2610'.

NORTH

DATE 10-20-48 SCOUT H. J. G.

THE PURE OIL COMPANY

Date March 28, 1945 Corrected

LOCATION REPORT

A.F.E. No. _____

Division Mich. Producing District _____ Lease Evan Crowe

Acres _____ Lease No. _____ Elevation _____ Well No. 5 (Serial No. 338)

Quadrangle NW SW NE Sec. 36 Twp. 22 N Rge. 2 E ~~US~~ Twp. West Branch

Survey N 1/4 Sec 17 T 1 N R 1 E County Ogemaw State Michigan

Operator ~~Consolidated Petroleum Products, Inc.~~ Map West Branch Township, Ogemaw County

Feet from North Line of Lease

“ “ East “ “ “

“ “ South “ “ “

“ “ West “ “ “

Feet from North Line of Section

“ “ East “ “ “

“ “ South “ “ “


“ “ West “ “ “



LEGEND

☐ Location


 **Gas Well**

● Oil Well



 Gas - Distillate Well

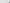
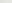
 or  Dry Hole

● Dry Showing Oil

 Dry Showing Gas

 Abandoned Location

 or  **Abandoned Gas Well**

 or  Abandoned Oil Well

● or ○ Input Well

See plat - Ogemaw #338.

Remarks: Change of operator.

Scale _____

Submitted by Scouting Department

CIVIL Engineer

Approved by _____

Approved by _____
Vice-President – General Manager

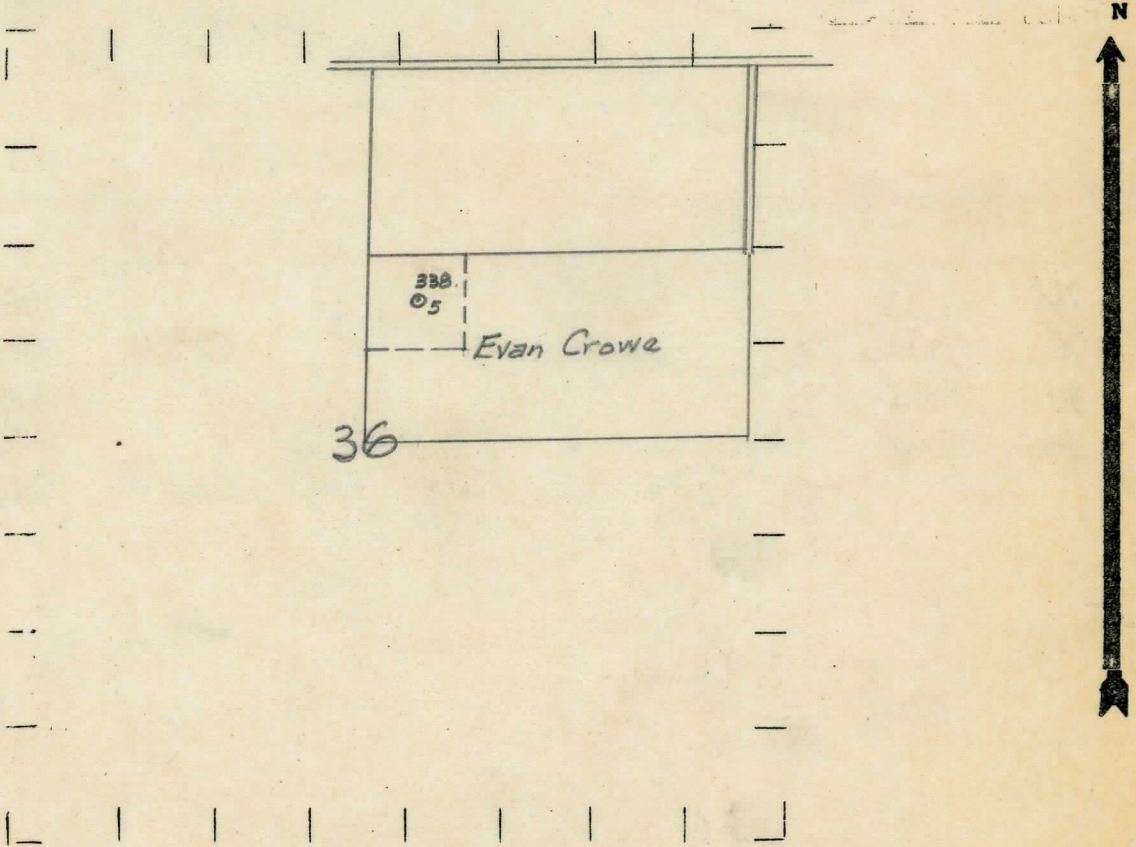
Vice-President – General Manager

DATE Nov. 4, 1937 LOCATION REPORT No. 338
STATE Michigan COUNTY Ogemaw DIST. West Branch SEC. 36 TOWN 22-N RANGE 2-E
WELL No. 5 (SERIAL No. 338) FARM Evan Crowe ACRES
NAME OF STREAM OR WATERS QUADRANGLE NW-SW-NE
OPERATOR William G. Lewis Map West Branch Twp., Ogemaw Co.
William G. Lewis West Branch - Oge.

330 330 Feet from North Line of Farm
330 330 " " East " " "
330 330 " " South " " "
330 330 " " West " " "
Feet from North Line of Section
" " East " " "
990 990 " " South " " $\frac{1}{4}$ "
330 330 " " West " " $\frac{1}{4}$ "

- LEGEND
- | | |
|------------------|----------------------|
| ○ LOCATION | ⊙ DRY HOLE |
| ① RIG | ⊙ DRY SHOWING OIL |
| ⊕ DRILLING | ⊙ DRY SHOWING GAS |
| ⊙ GAS WELL | ⊙ ABANDONED LOCATION |
| ⊙ OIL WELL | ⊙ ABANDONED GAS WELL |
| ⊙ SMALL OIL WELL | ⊙ ABANDONED OIL WELL |

NOTE: Below make tracing from map, (when no map is obtainable make sketch) showing farm, center of section, this location with measurements and also wells, dry holes, or other locations in the vicinity of this location.



REMARKS:

SIGNED R. L. Hager
Superintendent or Foreman.

Michigan Producing Division

Date **February 10, 1938** No. **338**
 State **Michigan** County **Ogemaw** Dist. **West Branch**
 (Serial No.) Twp. **22 N** Sec. **38** Rge. **2 E**
 Well No. **5** (County No.) **338** Farm **Evan Crowe** Acres
 Operator **Wm. G. Lewis** by **Scouting Department**
 Information secured ~~xxxx~~
 Date well started **11-3-37** Date well completed **2-1-38** Elevation **857.9**

PRODUCTION RECORD

1st 24 hours natural **Filled up 500 ft.**

2nd 24 hours natural

Date of shot No. of quarts From to From to

Date of acid **2-2-38** No. of gallons **1000**

1st 24 hours after acid **100 Barrels**

2nd 24 hours after acid

FORMATION AND CASING RECORD

Formation	Top	Bottom	Top Pay	Bottom Pay	Remarks	Casing	
						Size	Set to
Sunbury	1155					10"	151
Berea	1170	1190				8-1/4"	454
Antrim	1290					6-5/8"	1731
Traverse	1700		1705	1710	Hole full water	5-3/16"	2460
Dundee	2457	S.L.M.	2470	2557	Show oil		
			2600	2610	" "		
Total Depth		2610					

Remarks **Show oil and water 1810.**

Signed **D. C. Shackelford**