



Western Michigan University
ScholarWorks at WMU

Legacy Scout Tickets from Pure Oil Company

8-20-2021

MGRRE_PureOilScoutTickets_Allen_1-A_21129047400000

MGRRE

Western Michigan University

Follow this and additional works at: <https://scholarworks.wmich.edu/pure>



Part of the Geology Commons

WMU ScholarWorks Citation

MGRRE, "MGRRE_PureOilScoutTickets_Allen_1-A_21129047400000" (2021). *Legacy Scout Tickets from Pure Oil Company*. 8039.

<https://scholarworks.wmich.edu/pure/8039>

This Document is brought to you for free and open access via ScholarWorks at WMU. It has been accepted for inclusion in Legacy Scout Tickets from Pure Oil Company by an authorized administrator of ScholarWorks at WMU. See the National Digital Catalogue - Science Base Catalogue for more collections submitted by MGRRE.



MGRRE_PureOilScoutTickets_Allen_1-A_21129047400000

API 21129047400000

Permit Number 4740

Lease Name Allen

Well Number 1-A

County Ogemaw

Township 22N

Range 02E

Section 20

2021 DEQ or Pure co_name Jones and Durham

Pure Number 345

Latitude 44.28355

Longitude -84.21509

THE PURE OIL COMPANY
LOCATION REPORT

Date February 25, 1944

A.F.E. No. _____

Division Mich. Producing District _____ Lease Hugh Allen

Acres _____ Lease No. _____ Elevation _____ Well No. 1-A (Serial No. 345)

Quadrangle NW NW SE Sec. 20 Twp. 22 N Rge. 2 E ^{Dist.} West Branch

Survey _____ County Ogemaw State Michigan

Operator Durham and Jones Map West Branch Township, Ogemaw County

Feet from North Line of Lease

— “ “ East “ “ “

— “ “ South “ “ “

— “ “ West “ “ “

Feet from North Line of Section

“ “ East “ “ “

“ “ South “ “ “

“ “ West “ “ “



LEGEND

☐ Location


 Gas Well

● Oil Well



 Gas — Distillate Well

 or  Dry Hole



● Dry Showing Oil

 Dry Showing Gas

 Abandoned Location

 or  Abandoned Gas Well

● or ● Abandoned Oil Well

 or  Input Well

Plugged and abandoned 1-11-44.

Total Depth 2751'.

N

Remarks: _____

Submitted by _____ Approved by _____
Civil Engineer Division Manager

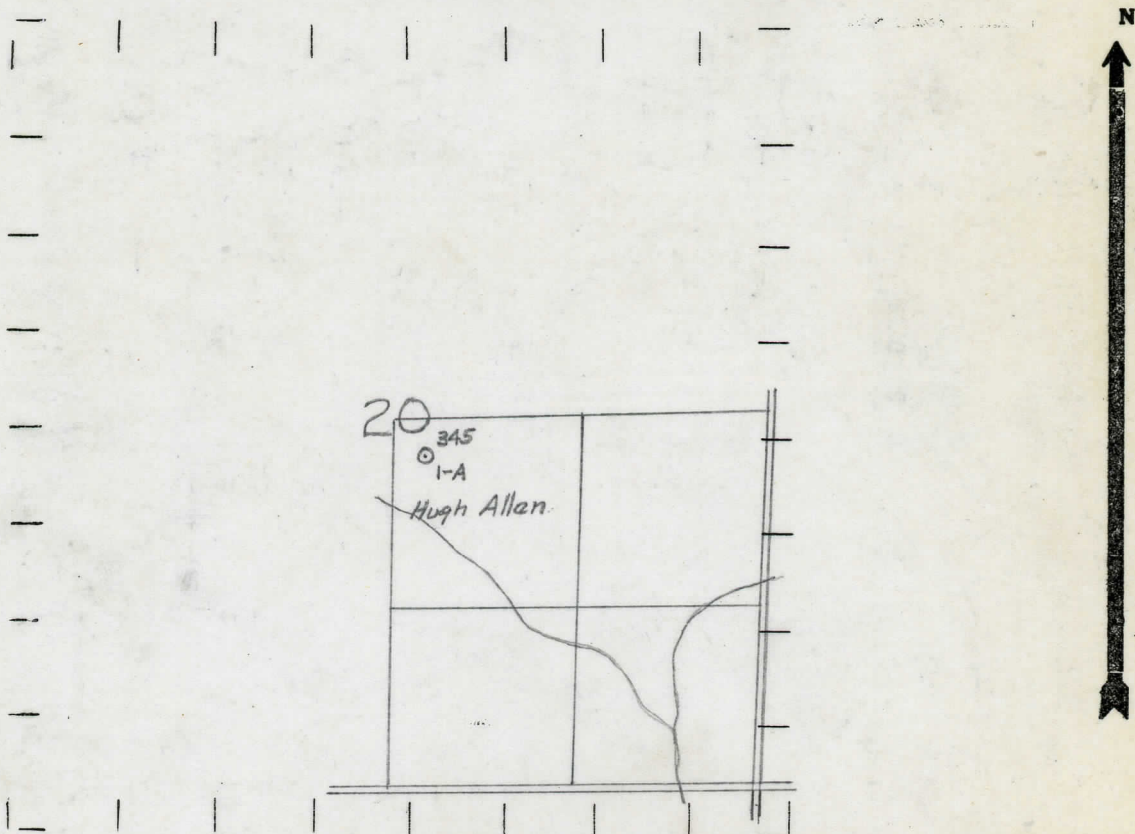
Approved by _____
Vice-President - General Manager

DATE December 30, 1937 LOCATION REPORT No. 345
STATE Michigan COUNTY Ogemaw DIST. West Branch SEC. 20 TOWN 22 N RANGE 2 E
WELL No. 1-A (SERIAL No. 345) FARM Hugh Allen ACRES
NAME OF STREAM OR WATERS _____ QUADRANGLE NW-NW-SE
OPERATOR Durham and Jones Map West Branch Township, Ogemaw County
250 250 Durham & Jones West Branch - 090
Feet from North Line of Farm

" " East " " "
" " South " " "
200 200 " " West " " "
250 250 Feet from North Line of Section
" " East " " "
" " South " " "
200 200 " " West 1/4 1/4 "

- LEGEND
- LOCATION
 - ⊙ RIG
 - ⊕ DRILLING
 - ☼ GAS WELL
 - OIL WELL
 - ⬮ SMALL OIL WELL
 - ⊖ DRY HOLE
 - ⬮ DRY SHOWING OIL
 - ☼ DRY SHOWING GAS
 - ⊖ ABANDONED LOCATION
 - ☼ ABANDONED GAS WELL
 - ⬮ ABANDONED OIL WELL

NOTE: Below make tracing from map, (when no map is obtainable make sketch) showing farm, center of section, this location with measurements and also wells, dry holes, or other locations in the vicinity of this location.



REMARKS:

SIGNED R. L. Yeager
Superintendent or Foreman.

Signed D. C. Shackelford