



Western Michigan University  
ScholarWorks at WMU

---

Legacy Scout Tickets from Pure Oil Company

---

8-20-2021

**MGRRE\_PureOilScoutTickets\_Barber, Cora\_3\_21129050480000**

MGRRE

*Western Michigan University*

Follow this and additional works at: <https://scholarworks.wmich.edu/pure>



Part of the Geology Commons

---

#### WMU ScholarWorks Citation

MGRRE, "MGRRE\_PureOilScoutTickets\_Barber, Cora\_3\_21129050480000" (2021). *Legacy Scout Tickets from Pure Oil Company*. 8054.

<https://scholarworks.wmich.edu/pure/8054>

This Document is brought to you for free and open access via ScholarWorks at WMU. It has been accepted for inclusion in Legacy Scout Tickets from Pure Oil Company by an authorized administrator of ScholarWorks at WMU. See the National Digital Catalogue - Science Base Catalogue for more collections submitted by MGRRE.



---

**MGRRE\_PureOilScoutTickets\_Barber, Cora\_3\_21129050480000**

API 21129050480000

Permit Number 5048

Lease Name Barber, Cora

Well Number 3

County Ogemaw

Township 22N

Range 02E

Section 28

2021 DEQ or Pure co\_name Muskegon Development Company

Pure Number 362

Latitude 44.2704704

Longitude -84.1995201

The Pure Oil Company  
THE PURE OIL COMPANY

COMPLETION RECORD OF WELLS DRILLED BY OTHER OPERATORS

DATE June 2, 1938

## LOCATION REPORT

No. 362STATE Michigan COUNTY Ogemaw DIST. West Branch TWP. West Branch SEC. 28 TOWN 22 N RANGE 2 EWELL No. 3 (SERIAL No. 362) FARM Cora E. Barber ACRESNAME OF STREAM OR WATERS QUADRANGLE SW-SE-NW  
SW SE NWOPERATOR Muskegon Development Company Map West Branch Township, Ogemaw County  
Musk. Dev. Co. West Branch - Oge.

Feet from North Line of Farm

990 990

" " East " " "

330 330

" " South " " "

" " West " " "

Feet from North Line of Section

990 990" " East " 1 1/4 "330 330" " South " 1 1/4 "

" " West " " "

O LOCATION

① RIG

⊕ DRILLING

☼ GAS WELL

● OIL WELL

⦿ SMALL OIL WELL

## LEGEND

⊙ DRY HOLE

⦿ DRY SHOWING OIL

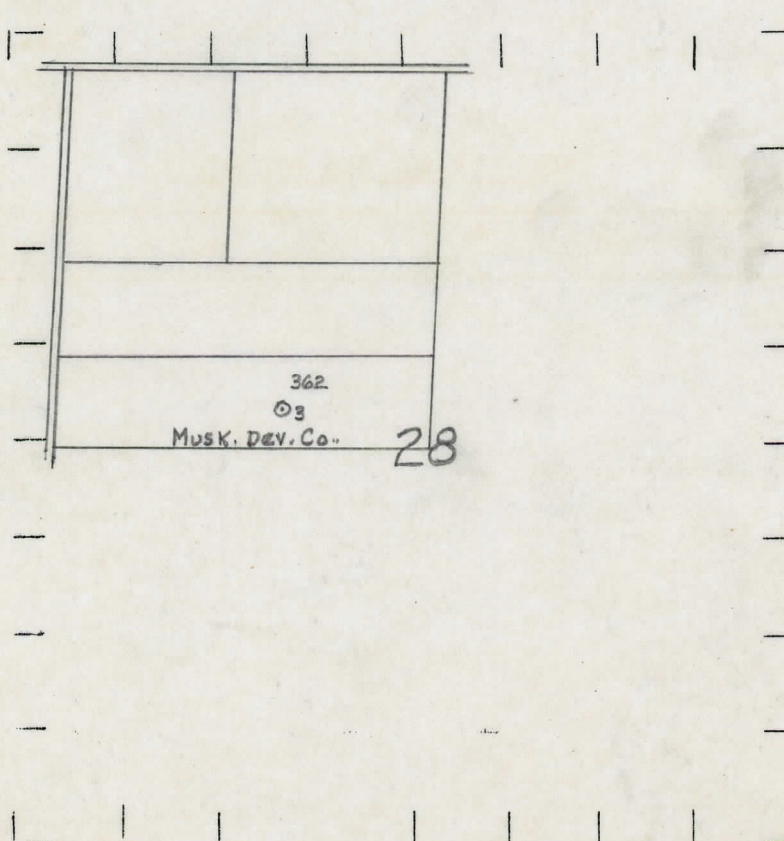
⊙ DRY SHOWING GAS

⦿ ABANDONED LOCATION

☼ ABANDONED GAS WELL

⦿ ABANDONED OIL WELL

NOTE: Below make tracing from map, (when no map is obtainable make sketch) showing farm, center of section, this location with measurements and also wells, dry holes, or other locations in the vicinity of this location.



REMARKS:

SIGNED

Superintendent or Foreman.



Signed D. C. Shackelford