



Western Michigan University
ScholarWorks at WMU

Legacy Scout Tickets from Pure Oil Company

8-20-2021

**MGRRE_PureOilScoutTickets_Crawford, W S & E
H_5_21129050840000**

MGRRE
Western Michigan University

Follow this and additional works at: <https://scholarworks.wmich.edu/pure>



Part of the Geology Commons

WMU ScholarWorks Citation

MGRRE, "MGRRE_PureOilScoutTickets_Crawford, W S & E H_5_21129050840000" (2021). *Legacy Scout Tickets from Pure Oil Company*. 8060.
<https://scholarworks.wmich.edu/pure/8060>

This Document is brought to you for free and open access via ScholarWorks at WMU. It has been accepted for inclusion in Legacy Scout Tickets from Pure Oil Company by an authorized administrator of ScholarWorks at WMU. See the National Digital Catalogue - Science Base Catalogue for more collections submitted by MGRRE.



MGRRE_PureOilScoutTickets_Crawford, W S & E H_5_21129050840000

API 21129050840000

Permit Number 5084

Lease Name Crawford, W S & E H

Well Number 5

County Ogemaw

Township 22N

Range 02E

Section 28

2021 DEQ or Pure co_name Muskegon Development Company

Pure Number 368

Latitude 44.2723512

Longitude -84.1940434

THE PURE OIL COMPANY
COMPLETION RECORD OF WELLS DRILLED BY OTHER OPERATORS
LOCATION REPORT

DATE June 9, 1938

No. 368

STATE Michigan COUNTY Ogemaw DIST. W-Branch TWP. West Branch SEC. 28 TOWN 22 N RANGE 2 E

WELL No. 5 (SERIAL No. 368) FARM W. S. & E. H. Crawford ACRES

NAME OF STREAM OR WATERS QUADRANGLE NW SW NE

OPERATOR Weber Oil Company Map West Branch Township, Ogemaw County

330 330 Feet from North Line of Farm

" " East " " "

" " South " " "

330 330 " " West " " "

Feet from North Line of Section

" " East " " "

990 990 " " South " 1/4 "

330 330 " " West " 1/4 "

○ LOCATION

① RIG

⊕ DRILLING

☼ GAS WELL

● OIL WELL

⦿ SMALL OIL WELL

LEGEND

⊙ DRY HOLE

⦿ DRY SHOWING OIL

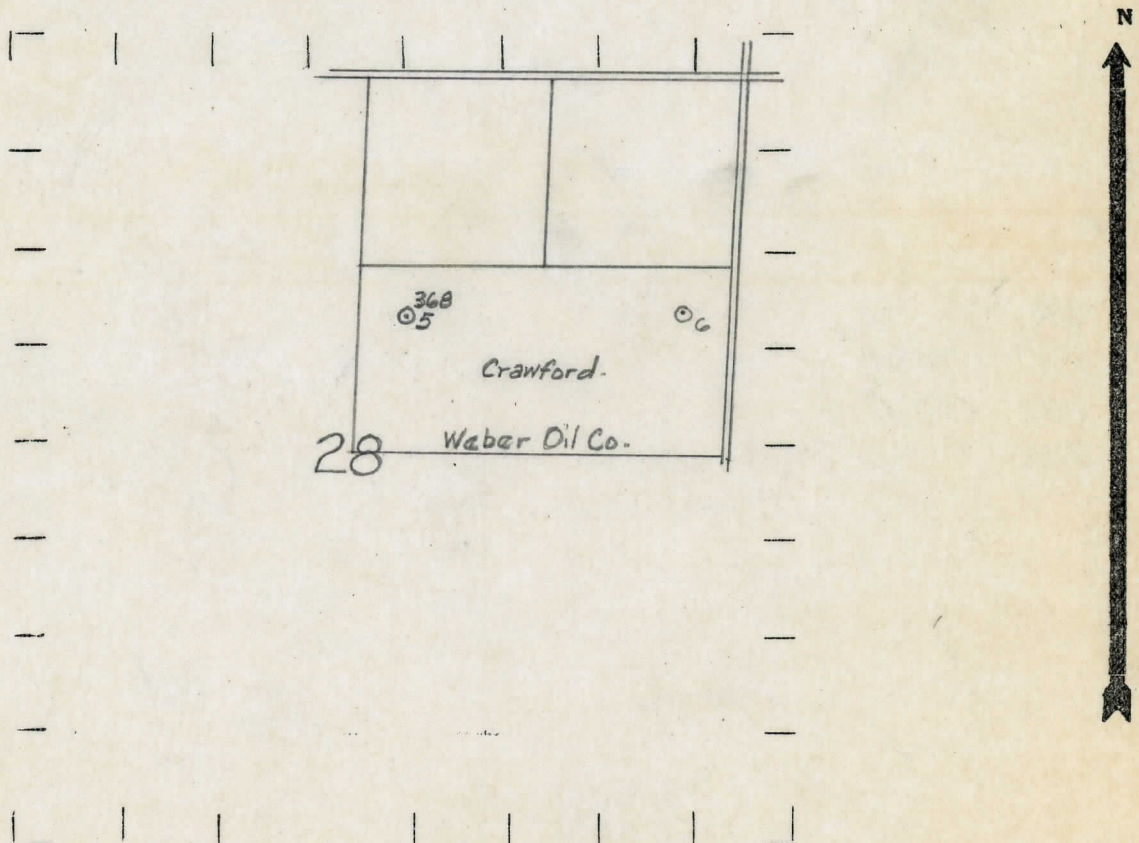
⦿ DRY SHOWING GAS

⦿ ABANDONED LOCATION

⦿ ABANDONED GAS WELL

⦿ ABANDONED OIL WELL

NOTE: Below make tracing from map, (when no map is obtainable make sketch) showing farm, center of section, this location with measurements and also wells, dry holes, or other locations in the vicinity of this location.



REMARKS:

SIGNED

R. L. G.

Superintendent or Foreman.

