



Western Michigan University  
ScholarWorks at WMU

---

Legacy Scout Tickets from Pure Oil Company

---

8-20-2021

**MGRRE\_PureOilScoutTickets\_Crawford, W S & E  
H\_9\_21129066580000**

MGRRE  
*Western Michigan University*

Follow this and additional works at: <https://scholarworks.wmich.edu/pure>



Part of the Geology Commons

---

#### WMU ScholarWorks Citation

MGRRE, "MGRRE\_PureOilScoutTickets\_Crawford, W S & E H\_9\_21129066580000" (2021). *Legacy Scout Tickets from Pure Oil Company*. 8078.  
<https://scholarworks.wmich.edu/pure/8078>

This Document is brought to you for free and open access via ScholarWorks at WMU. It has been accepted for inclusion in Legacy Scout Tickets from Pure Oil Company by an authorized administrator of ScholarWorks at WMU. See the National Digital Catalogue - Science Base Catalogue for more collections submitted by MGRRE.



---

MGRRE\_PureOilScoutTickets\_Crawford, W S & E H\_9\_21129066580000

API 21129066580000

Permit Number 6658

Lease Name Crawford, W S & E H

Well Number 9

County Ogemaw

Township 22N

Range 02E

Section 28

2021 DEQ or Pure co\_name Muskegon Development Company

Pure Number 388

Latitude 44.2722514

Longitude -84.1885702

DATE August 24, 1939

No. 388

STATE Michigan COUNTY Ogemaw DIST West Branch TWP. West Branch SEC. 28 TOWN 22 N RANGE 2 E  
WELL No. 9 (SERIAL No. 388) FARM W. S. & E. H. Crawford ACRES

NAME OF STREAM OR WATERS QUADRANGLE NW-SE-NE

OPERATOR Weber Oil Company Map West Branch Township, Ogemaw County

32330 Feet from North Line of Farm

9990 " " East " " "

" " South " " "

" " West " " "

Feet from North Line of Section

99990 " " East " " "

99990 " " South " 1/4

" " West " " "

LEGEND

○ LOCATION

① RIG

⊕ DRILLING

☼ GAS WELL

● OIL WELL

⦿ SMALL OIL WELL

⊖ DRY HOLE

⦿ DRY SHOWING OIL

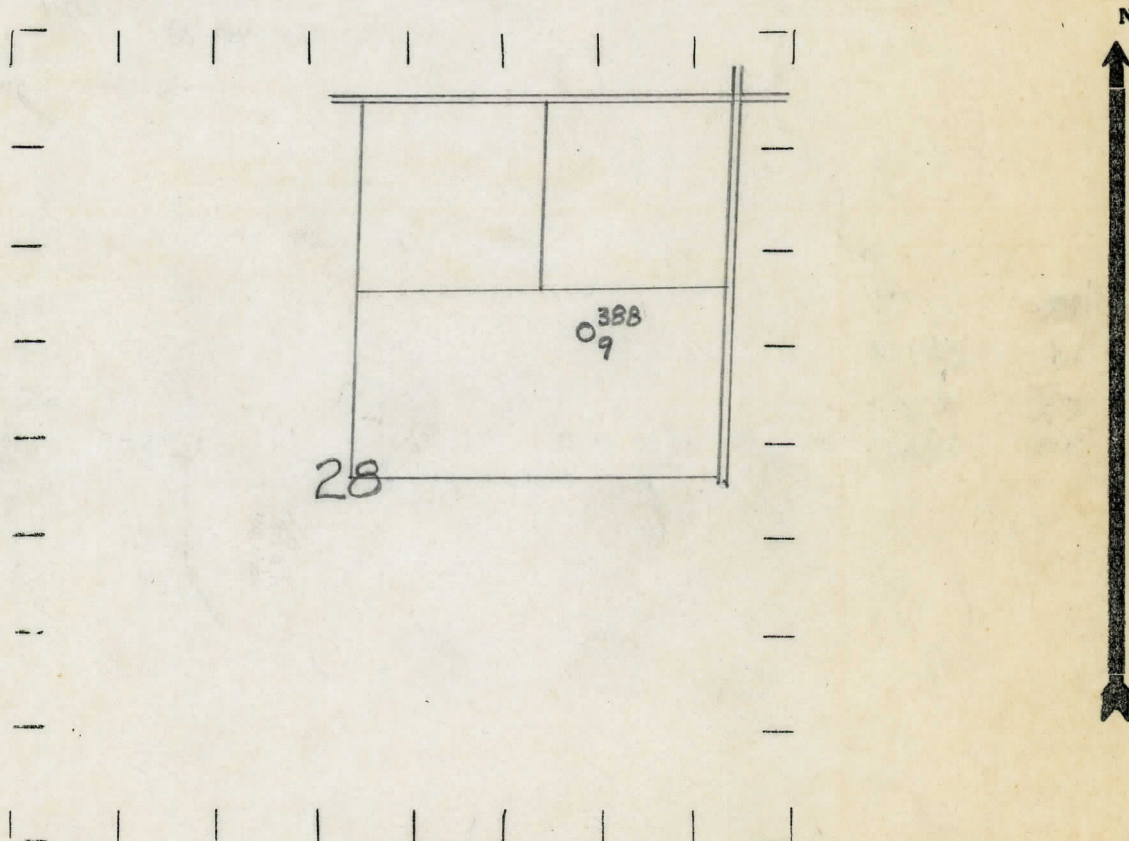
⊖ DRY SHOWING GAS

⊖ ABANDONED LOCATION

⦿ ABANDONED GAS WELL

⦿ ABANDONED OIL WELL

NOTE: Below make tracing from map, (when no map is obtainable make sketch) showing farm, center of section, this location with measurements and also wells, dry holes, or other locations in the vicinity of this location.



REMARKS:

SIGNED

Superintendent or Foreman.



## Michigan Producing Division

No. 388

Operator **Weber Oil Company** By **Scouting Department**  
Information secured ~~from~~

Date well started **10-14-39** Dated well completed **12-2-39** Elevation **936.7**

1st 24 hours natural      Filled up 400 ft.

2nd 24 hours natural

[illegible]

Date of acid **12-27-39** No. of gallons **2000**

1st 24 hours after acid **30 Barrels (Pumped)**

shot

2nd 24 hours after acid

### FORMATION AND CASING RECORD

[illegible]

Remarks

Signed

D. C. Shackelford