



Western Michigan University  
ScholarWorks at WMU

---

Legacy Scout Tickets from Pure Oil Company

---

8-20-2021

**MGRRE\_PureOilScoutTickets\_Estey, Frank\_3\_21129071140000**

MGRRE

*Western Michigan University*

Follow this and additional works at: <https://scholarworks.wmich.edu/pure>



Part of the Geology Commons

---

#### WMU ScholarWorks Citation

MGRRE, "MGRRE\_PureOilScoutTickets\_Estey, Frank\_3\_21129071140000" (2021). *Legacy Scout Tickets from Pure Oil Company*. 8080.

<https://scholarworks.wmich.edu/pure/8080>

This Document is brought to you for free and open access via ScholarWorks at WMU. It has been accepted for inclusion in Legacy Scout Tickets from Pure Oil Company by an authorized administrator of ScholarWorks at WMU. See the National Digital Catalogue - Science Base Catalogue for more collections submitted by MGRRE.



---

**MGRRE\_PureOilScoutTickets\_Estey, Frank\_3\_21129071140000**

API 21129071140000

Permit Number 7114

Lease Name Estey, Frank

Well Number 3

County Ogemaw

Township 22N

Range 02E

Section 28

2021 DEQ or Pure co\_name Muskegon Development Company

Pure Number 390

Latitude 44.2686402

Longitude -84.1991448

THE PURE OIL COMPANY

DATE December 13, 1939

LOCATION REPORT

No. 390

STATE Michigan COUNTY Ogemaw DIST. W. Branch TWP. West Branch SEC. 28 TOWN 22 N RANGE 2 E

WELL No. 3 (SERIAL No. 390) FARM Frank Estey ACRES

NAME OF STREAM OR WATERS QUADRANGLE NW-NE-SW

OPERATOR Weber Oil Company Map West Branch Twp., Ogemaw County

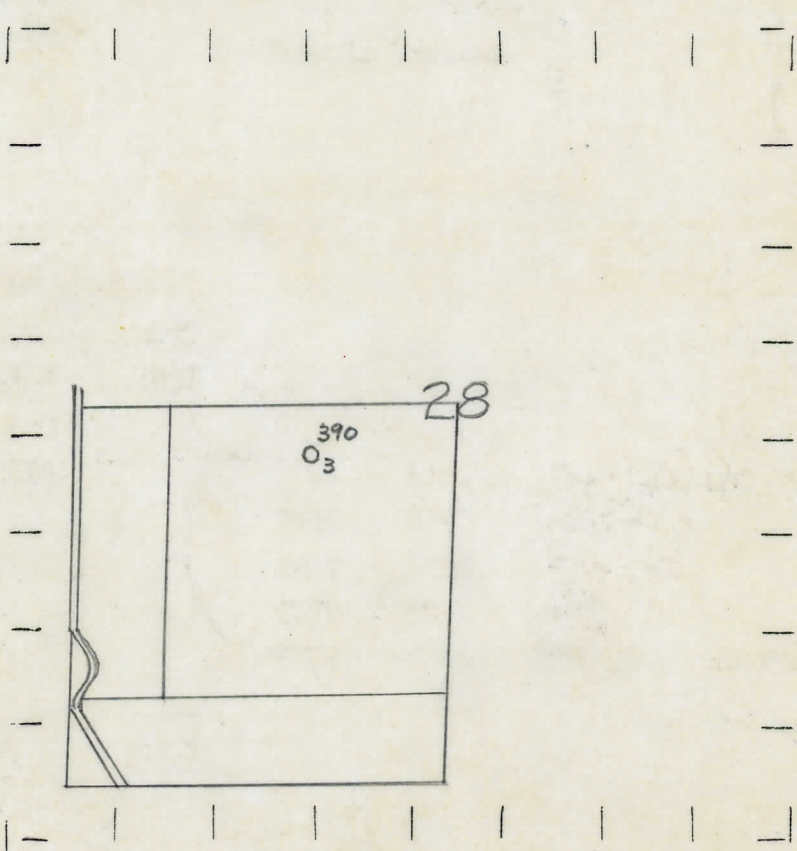
3330 Feet from North Line of Farm  
" " East " " "  
" " South " " "  
" " West " " "  
3330 Feet from North Line of Section  
" " East " " "  
" " South " " "  
" " West " " "

12-11-39

LEGEND

- LOCATION
- ⊙ RIG
- ⊕ DRILLING
- ☀ GAS WELL
- OIL WELL
- ⬮ SMALL OIL WELL
- ⊖ DRY HOLE
- ⬮ DRY SHOWING OIL
- ⊖ DRY SHOWING GAS
- ⊖ ABANDONED LOCATION
- ☀ ABANDONED GAS WELL
- ⬮ ABANDONED OIL WELL

NOTE: Below make tracing from map, (when no map is obtainable make sketch) showing farm, center of section, this location with measurements and also wells, dry holes, or other locations in the vicinity of this location.



REMARKS:

SIGNED

Superintendent or Foreman.



**Michigan Producing Division**

Date **February 28, 1940** No. **390**  
 State **Mich.** County **Ogemaw** Twp. **West Branch** Sec. **28** Twp. **22 N** Rge. **2 E**  
 (Serial No.)  
 Well No. **3** (~~Scouting No.~~) **390** Farm **Frank Estey** Acres  
 Operator **Weber Oil Company** By **Scouting Department**  
 Information secured ~~from~~  
 Date well started **12-11-39** Dated well completed **2-10-40** Elevation **942.9**

PRODUCTION RECORD

1st 24 hours natural **3 Barrels (Swabbed)**  
 2nd 24 hours natural  
 Date of shot No. of quarts From to From to  
 Date of acid **2-20-40** No. of gallons **2000**  
 1st 24 hours after acid ~~shot~~ **15 Barrels (Pumped)**  
 shot  
 2nd 24 hours after acid

FORMATION AND CASING RECORD

Formation	Top	Bottom	Top Pay	Bottom Pay	Remarks	Casing	
						Size	Set at
<b>Sunbury</b>	<b>1181</b>	<b>1205</b>				<b>10"</b>	<b>310</b>
<b>Berea</b>	<b>1212</b>	<b>1216</b>				<b>8-1/4"</b>	<b>514</b>
<b>Antrim</b>	<b>1300</b>					<b>6-5/8"</b>	<b>1815</b>
<b>Traverse Lime</b>	<b>1754</b>			<b>1766</b>	<b>Show oil, gas, &amp; water.</b>	<b>5-3/16"</b>	<b>2549</b>
			<b>2040</b>	<b>2045</b>	<b>Show oil.</b>		
<b>Dundee</b>	<b>2545</b>		<b>2612</b>	<b>2618</b>	<b>Show oil.</b>		
			<b>2675</b>	<b>2693</b>	<b>" "</b>		
			<b>2725</b>	<b>2732</b>	<b>Hole full water.</b>		
<b>Total Depth</b>		<b>2732</b>					
<b>Plugged Back:</b>		<b>2715</b>					

Remarks **Wier sand from 472'-480'; oil, gas, and water from 472' to 475'.**

Signed

**D. C. Shackelford**