



Western Michigan University
ScholarWorks at WMU

Legacy Scout Tickets from Pure Oil Company

8-20-2021

MGRRE_PureOilScoutTickets_State Foster_C-1_21129109120000

MGRRE

Western Michigan University

Follow this and additional works at: <https://scholarworks.wmich.edu/pure>



Part of the Geology Commons

WMU ScholarWorks Citation

MGRRE, "MGRRE_PureOilScoutTickets_State Foster_C-1_21129109120000" (2021). *Legacy Scout Tickets from Pure Oil Company*. 8097.

<https://scholarworks.wmich.edu/pure/8097>

This Document is brought to you for free and open access via ScholarWorks at WMU. It has been accepted for inclusion in Legacy Scout Tickets from Pure Oil Company by an authorized administrator of ScholarWorks at WMU. See the National Digital Catalogue - Science Base Catalogue for more collections submitted by MGRRE.



MGRRE_PureOilScoutTickets_State Foster_C-1_21129109120000

API 21129109120000

Permit Number 10912

Lease Name State Foster

Well Number C-1

County Ogemaw

Township 24N

Range 02E

Section 29

2021 DEQ or Pure co_name Muskegon Development Company

Pure Number 407

Latitude 44.4453165

Longitude -84.2164429

THE PURE OIL COMPANY

LOCATION REPORT

Date July 19, 1944

A.F.E. No. _____

Division Mich. Producing

District _____

Lease _____

State-Foster
State-Foster

Acres _____ Lease No. _____

Elevation _____

Well No. C-1(Serial No. 407)Quadrangle NW SW NESec. 29Twp. 24 NRge. 2 EState-Foster
State-Foster

Survey _____

County OgemawState MichiganOperator Muskegon Development CompanyMap Foster Twp. - Ogemaw Co.

Feet from North Line of Lease

990 990

" " East " " "

330 330

" " South " " "

" " West " " "

Feet from North Line of Section

990 990

" " East " " "

330 330" " South " 1/4 "

" " West " " "

LEGEND

○ Location



Gas Well



Dry Showing Gas



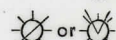
Oil Well



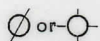
Abandoned Location



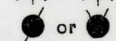
Gas-Distillate Well



Abandoned Gas Well



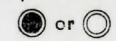
Dry Hole



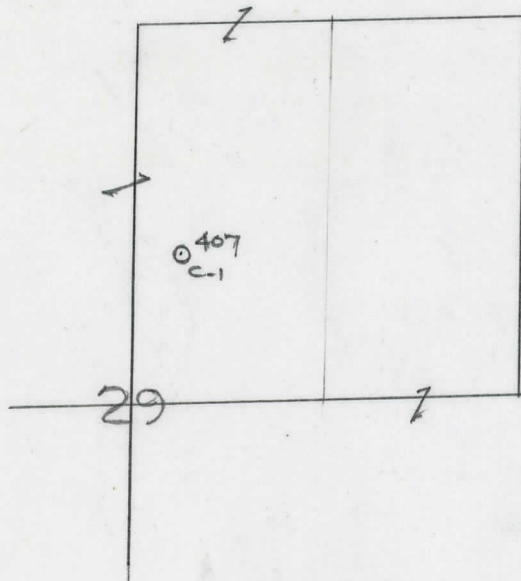
Abandoned Oil Well



Dry Showing Oil



Input Well



N

Scale _____

Remarks: _____

Submitted by RN

Civil Engineer

Approved by _____

Division Manager

Approved by _____

Vice-President - General Manager

Date

7072 70' 7077

LOCATION BEBOBI

V.E.E. NO.

COMPLETION RECORD OF WELLS DRILLED BY OTHER OPERATORS

Michigan Producing Division

Date **June 26, 1946** No. **407**
 State **Mich.** Co. **Ogemaw** Dist. **XXXX** Twp. **Foster** Sec. **29** Twp. **24 N** Rge. **2 E**
 Well No. **C-1** Serial No. **407** Farm **State-Foster** Acres
 Operator **Muskegon Development Company**
 Date started **3-23-45** Date completed **9-6-45** Elevation **1327 (Est.)**
1323.8 (Ground)

PRODUCTION RECORD

1st 24 hours natural **Show of oil.**
 Date of shot **10-23-45;** No. of quarts From To From To
 Date of acid **5-6-46** No. of gallons **2250**
shot Pumped 3 Bbls.
 1st 24 hours after acid
 Completed as: Oil Well **X** Gas Well Dry Hole

FORMATION AND CASING RECORD

| Formation | Top | Bottom | Top Pay | Bottom Pay | Remarks | Casing | |
|--------------------------|---------|----------|---------|------------|---------------------------------------|---------|---------|
| | | | | | | Size | Set at |
| Coldw. Red Rock | 1450 | 1452 | (-124) | | | 12" | 23 |
| Sunbury | 1485 | S.L.M. | (-159)s | | | 8-1/4" | 800 |
| Berea | 1509 8 | (-182)s | | | | 6-5/8" | 3168 |
| Antrim | 1594 | (-268)s | | | | 5-3/16" | 4030 |
| Traverse line | 2046 | S.L.M. | | | Traverse 2065s 1-736) | | |
| Dundee | 2822 | (-1496)s | | | | | |
| Detroit River | 3092s | (-1766) | | (-380/) | See remarks below. | | |
| Lynx line | 4171 | (-2845)s | 5127 | 5137 | 600 ft. oil in hole. | | |
| Black line | 5080 | (-3754)s | 5144 | 5147 | 1 ba. salt water per hour below 5137. | | |
| Total Depth | (-3834) | 5160 | | (-3818) | | | (-3811) |
| Plugged back: | (-3805) | 5131 | | | | | |
| Plugged back: | (-2974) | 4300 | 4138 | 4155 | (-2812) | | |
| | | | (-1619) | (-1714) | | | (-1825) |

Remarks 1500 ft. salt water 2945; black sulphur water 3040; very small show oil 3151-62; show sour oil 3875-3884; show oil & gas 3917-3927; show oil 4138-4144; show gas 4155. Pumped all salt water after 1st acid treatment-plugged back to 4300 - treated showing 4138-4155-pumping 3 bbls. per day from 4138-4155 after acid treatment on 5-6-46.

1473' eq. 1482' SLM; 2049' eq. 2055' SLM; 4015' equals 3996' SLM.

Signed **D. C. Shackelford**