



Western Michigan University  
ScholarWorks at WMU

---

Legacy Scout Tickets from Pure Oil Company

---

8-20-2021

**MGRRE\_PureOilScoutTickets\_Anderson, Carl\_1\_21129118450000**

MGRRE

*Western Michigan University*

Follow this and additional works at: <https://scholarworks.wmich.edu/pure>



Part of the Geology Commons

---

#### WMU ScholarWorks Citation

MGRRE, "MGRRE\_PureOilScoutTickets\_Anderson, Carl\_1\_21129118450000" (2021). *Legacy Scout Tickets from Pure Oil Company*. 8109.

<https://scholarworks.wmich.edu/pure/8109>

This Document is brought to you for free and open access via ScholarWorks at WMU. It has been accepted for inclusion in Legacy Scout Tickets from Pure Oil Company by an authorized administrator of ScholarWorks at WMU. See the National Digital Catalogue - Science Base Catalogue for more collections submitted by MGRRE.



---

**MGRRE\_PureOilScoutTickets\_Anderson, Carl\_1\_21129118450000**

API 21129118450000

Permit Number 11845

Lease Name Anderson, Carl

Well Number 1

County Ogemaw

Township 23N

Range 02E

Section 11

2021 DEQ or Pure co\_name Muskegon Development Company

Pure Number 420

Latitude 44.40608

Longitude -84.15545

# THE PURE OIL COMPANY LOCATION REPORT

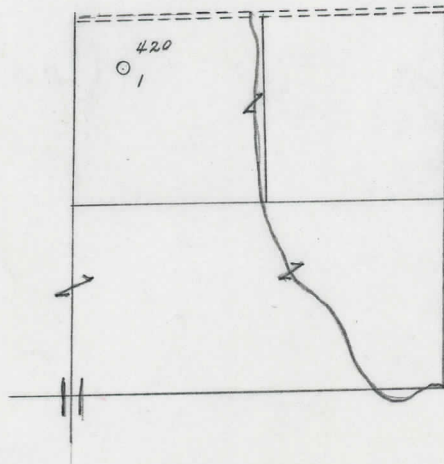
Date September 26, 1945 A.F.E. No. CARL ANDERSON  
 Division Mich. Producing District \_\_\_\_\_ Lease Carl Anderson  
 Acres \_\_\_\_\_ Lease No. \_\_\_\_\_ Elevation \_\_\_\_\_ Well No. 1 (Serial No. 420)  
 Quadrangle NW-NW-NE Sec. 11 Twp. 23 N Rge. 2 E Twp. Klackening  
 Survey \_\_\_\_\_ County Ogemaw State Michigan  
 Operator United Drillers & Producers, Inc. Map Klackening Township, Ogemaw County

Feet from North Line of Lease

990	990	" "	East	" "	" "
330	330	" "	South	" "	" "
330	330	" "	West	" "	" "
Feet from North Line of Section					
		" "	East	" "	" "
		" "	South	" "	" "
330	330	" "	West	" "	" "

## LEGEND

- Location
- ☀ Gas Well
- Oil Well
- ☀ Gas - Distillate Well
- or ○ Dry Hole
- Dry Showing Oil
- ☀ Dry Showing Gas
- ⊗ Abandoned Location
- ☀ or ⊗ Abandoned Gas Well
- or ● Abandoned Oil Well
- or ○ Input Well



Scale \_\_\_\_\_

Remarks: \_\_\_\_\_

Submitted by \_\_\_\_\_

Civil Engineer

Approved by \_\_\_\_\_

Division Manager

Approved by \_\_\_\_\_

Vice-President - General Manager

## THE PURE OIL COMPANY

THE PURE OIL COMPANY

## COMPLETION RECORD OF WELLS DRILLED BY OTHER OPERATORS

Michigan Producing

Division

Date July 10, 1946No. 420State Mich. Co. OgemawTwp. KlackingSec. 11Twp. 23 NRge. 2 EWell No. 1 Serial No. 420Farm Carl Anderson

Acres

Operator United Drillers & Producers, Inc.Date started 12-5-45

Date completed

3-8-46

Elevation

1063.8

## PRODUCTION RECORD

1st <sup>36</sup>~~24~~ hours natural Filled up 250 ft.Date of shot 5-15-46 No. of quarts 5714 From          To         Date of acid 6-28-46 No. of gallons 57141st 24 hours after acid Pumped 19 Bbls.Completed as: Oil Well X Gas Well          Dry Hole         

## FORMATION AND CASING RECORD

Formation	Top	Bottom	Top Pay	Bottom Pay	Remarks	Casing	
						Size	Set at
Sunbury	1282	(-218)			Very small show oil	10"	347
Berea	1310	(-246)			1325-1340. (-261)	8-1/4"	430
Antrim	1397	(-333)				6-5/8"	2017
Traverse Lime	1865	S.L.M.	(-801)		Flow S.W. 1871. (-801)	5-3/16"	3848
Dundee	2618	(-1554)			5 ba. S.W./Hr. 2760; (-1696)		
					H.F.S.W. 2820. (-1756)		
Detroit River	?	2828 s	(-1764)				
Salt	3015	(-1951)			Show sulphur oil & gas	3570-3575. (-2506)	
Richfield	3881	(-2817)			" " " " "	3640-3645. (-2576)	
Sylvania Form.	3995	(-2931)			Show gas 3955-3964. (-2891)		
			3964	3976	(-2900)		
Total Depth		4000	(-2936)				

Remarks 1837' equals 1840' SLM; 3827' equals 3820' SLM.

Signed

D. C. Shackelford