



Western Michigan University
ScholarWorks at WMU

Legacy Scout Tickets from Pure Oil Company

8-20-2021

**MGRRE_PureOilScoutTickets_Adams & Walker
Comm_1_21129122510000**

MGRRE
Western Michigan University

Follow this and additional works at: <https://scholarworks.wmich.edu/pure>



Part of the Geology Commons

WMU ScholarWorks Citation

MGRRE, "MGRRE_PureOilScoutTickets_Adams & Walker Comm_1_21129122510000" (2021). *Legacy Scout Tickets from Pure Oil Company*. 8113.
<https://scholarworks.wmich.edu/pure/8113>

This Document is brought to you for free and open access via ScholarWorks at WMU. It has been accepted for inclusion in Legacy Scout Tickets from Pure Oil Company by an authorized administrator of ScholarWorks at WMU. See the National Digital Catalogue - Science Base Catalogue for more collections submitted by MGRRE.



MGRRE_PureOilScoutTickets_Adams & Walker Comm_1_21129122510000

API 21129122510000

Permit Number 12251

Lease Name Adams & Walker Comm

Well Number 1

County Ogemaw

Township 22N

Range 03E

Section 12

2021 DEQ or Pure co_name Mercury Exploration Company

Pure Number 424

Latitude 44.316

Longitude -84.01932

THE PURE OIL COMPANY

LOCATION REPORT

Date April 24, 1946 A.F.E. No. Adams-Walker (Comm.)
 Division Michigan Producing District _____ Lease Adams-Walker (Comm.)
 Acres _____ Lease No. _____ Elevation _____ Well No. 1 (Serial No. 424)
 Quadrangle C NW Sec. 12 Twp. 22 N Rge. 3 E Twp. Churchill
 Survey _____ County Ogemaw State Michigan
 Operator Sun Oil Co. Map Churchill Township, Ogemaw County

Operator Sun Oil Company
1320 1320

Feet from North Line of Lease

" " East " " "

" " South " " "

" " West " " "

Feet from North Line 1/4 Section

" " East " " "

" " South " " "

" " West " " "

1320 1320

1320 1320

1320 1320

LEGEND

○ Location

☀ Gas Well

● Oil Well

☀ Gas - Distillate Well

○ or ○ Dry Hole

● Dry Showing Oil

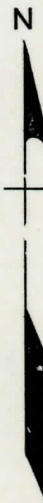
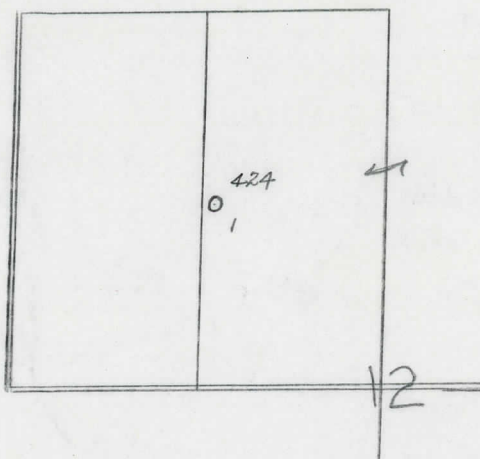
☀ Dry Showing Gas

⊗ Abandoned Location

☀ or ☀ Abandoned Gas Well

● or ● Abandoned Oil Well

● or ○ Input Well



Remarks: _____ Scale _____

Submitted by UB Civil Engineer Approved by _____ Division Manager

Approved by _____ Vice-President - General Manager

Signed D. C. Shackelford