



Western Michigan University
ScholarWorks at WMU

Legacy Scout Tickets from Pure Oil Company

8-20-2021

MGRRE_PureOilScoutTickets_Blum, Grezeszak, & Spannmacher Unitized_1_21129123140000

MGRRE
Western Michigan University

Follow this and additional works at: <https://scholarworks.wmich.edu/pure>



Part of the Geology Commons

WMU ScholarWorks Citation

MGRRE, "MGRRE_PureOilScoutTickets_Blum, Grezeszak, & Spannmacher Unitized_1_21129123140000" (2021). *Legacy Scout Tickets from Pure Oil Company*. 8115.
<https://scholarworks.wmich.edu/pure/8115>

This Document is brought to you for free and open access via ScholarWorks at WMU. It has been accepted for inclusion in Legacy Scout Tickets from Pure Oil Company by an authorized administrator of ScholarWorks at WMU. See the National Digital Catalogue - Science Base Catalogue for more collections submitted by MGRRE.



**MGRRE_PureOilScoutTickets_Blum, Grezeszak, & Spannmacher
Unitized_1_21129123140000**

API 21129123140000

Permit Number 12314

Lease Name Blum, Grezeszak, & Spannmacher Unitized

Well Number 1

County Ogemaw

Township 22N

Range 03E

Section 12

2021 DEQ or Pure co_name Churchill Corporation

Pure Number 426

Latitude 44.30887

Longitude -84.00957

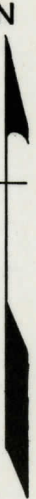
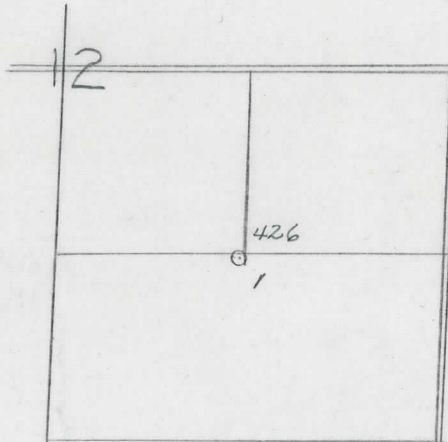
THE PURE OIL COMPANY
LOCATION REPORT

Date May 22, 1946 A.F.E. No. (Unitized)
Division Mich. Producing District _____ Lease Blum-Grozeszak-Spannmacher
(Unitized)
Acres _____ Lease No. 12 Elevation 22N 3E Well No. 1 (Serial No. 426)
Quadrangle App. C SE Sec. 12 Twp. 22 N Rge. 3 E ~~Blum-Grozeszak-Spannmacher~~ Churchill
Survey _____ County Ogemaw State Michigan
Operator Sun Oil Co. Map Churchill Township, Ogemaw County

Feet from North Line of Lease	
<u>1255</u> <u>1255</u>	" " East " " "
<u>1255</u> <u>1255</u>	" " South " " "
	" " West " " "
Feet from North Line of Section	
<u>1255</u> <u>1255</u>	" " East " " "
<u>1255</u> <u>1255</u>	" " South " " <u>1/4</u>
	" " West " " "

LEGEND

- Location
- | | |
|-----------------------|------------------------|
| Gas Well | Dry Showing Gas |
| Oil Well | Abandoned Location |
| Gas - Distillate Well | or Abandoned Gas Well |
| or Dry Hole | or Abandoned Oil Well |
| Dry Showing Oil | or Input Well |



Remarks: _____ Scale _____

Submitted by CB Civil Engineer Approved by _____ Division Manager

Approved by _____ Vice-President - General Manager

