



Western Michigan University  
ScholarWorks at WMU

---

Legacy Scout Tickets from Pure Oil Company

---

8-20-2021

## MGRRE\_PureOilScoutTickets\_Cass, Taylor, Walker, & Weeks Unitized\_1\_21129123260000

MGRRE  
*Western Michigan University*

Follow this and additional works at: <https://scholarworks.wmich.edu/pure>



Part of the Geology Commons

---

### WMU ScholarWorks Citation

MGRRE, "MGRRE\_PureOilScoutTickets\_Cass, Taylor, Walker, & Weeks Unitized\_1\_21129123260000" (2021). *Legacy Scout Tickets from Pure Oil Company*. 8116.  
<https://scholarworks.wmich.edu/pure/8116>

This Document is brought to you for free and open access via ScholarWorks at WMU. It has been accepted for inclusion in Legacy Scout Tickets from Pure Oil Company by an authorized administrator of ScholarWorks at WMU. See the National Digital Catalogue - Science Base Catalogue for more collections submitted by MGRRE.



---

**MGRRE\_PureOilScoutTickets\_Cass, Taylor, Walker, & Weeks  
Unitized\_1\_21129123260000**

API 21129123260000

Permit Number 12326

Lease Name Cass, Taylor, Walker, & Weeks Unitized

Well Number 1

County Ogemaw

Township 22N

Range 03E

Section 12

2021 DEQ or Pure co\_name Oryx Energy Company

Pure Number 427

Latitude 44.31609

Longitude -84.00903

*Corrected*  
**THE PURE OIL COMPANY**  
**LOCATION REPORT**

Date June 5, 1946 *Corrected*

A.F.E. No. \_\_\_\_\_

Division Mich. Producing District \_\_\_\_\_Lease Cass-Taylor-Walker-Weeks (Unitized)  
Cass-Taylor-Walker-Weeks (Unitized)Acres \_\_\_\_\_ Lease No. \_\_\_\_\_ Elevation \_\_\_\_\_ Well No. 1 (Serial No. 427)Quadrangle Approx. C-NE Sec. 12 Twp. 22 N Rge. 3 E ~~XXXX~~ ~~XXXX~~ ChurchillSurvey \_\_\_\_\_ County Ogemaw State MichiganOperator Sun Oil Co.  
Sun Oil Company Map Churchill Township, Ogemaw County

Feet from North Line of Lease	
<u>1220</u>	<u>1220</u>
" "	East " " "
<u>1260</u>	<u>1260</u>
" "	South " " "
" "	West " " "

Feet from North Line of Section	
<u>1220</u>	<u>1220</u>
" "	East " <u>1/4</u> "
<u>1260</u>	<u>1260</u>
" "	South " " "
" "	West " " "

**LEGEND**

○ Location



Gas Well



Dry Showing Gas



Oil Well



Abandoned Location



Gas - Distillate Well



Abandoned Gas Well



Dry Hole



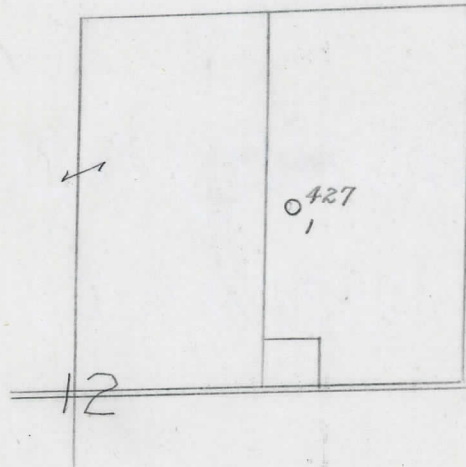
Abandoned Oil Well



Dry Showing Oil



Input Well



N

*footage correction*  
 Remarks: Footage correction.

Scale \_\_\_\_\_

Submitted by CB

Civil Engineer

Approved by \_\_\_\_\_

Division Manager

Approved by \_\_\_\_\_

Vice-President - General Manager

Date June 2, 1946 Collected

Date May 29, 1946

LOCATION REPORT  
THE SURE OIL COMPANY  
LOCATION REPORT

A.F.E. No. Cass-Taylor-Walker-Weeks (Unitized)  
Cass-Taylor-Walker-Weeks (Unitized)

Division Mich. Producing District

Lease 1 (Serial No. 427)

Acres \_\_\_\_\_ Lease No. \_\_\_\_\_ Elevation \_\_\_\_\_ Well No. 1 (Serial No. 427)

Quadrangle Approx. C-NE Sec. 12 Twp. 22 N Rge. 3 E Twp. Churchill

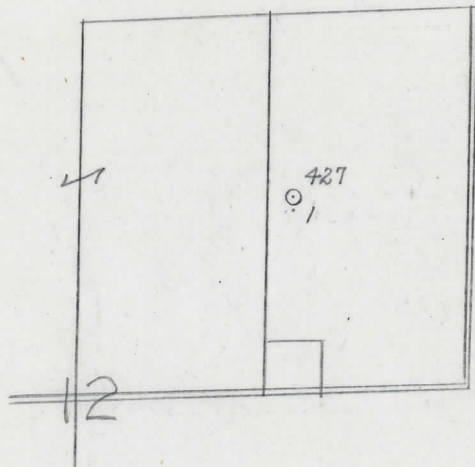
Survey \_\_\_\_\_ County Ogemaw State Michigan

Operator Sun Oil Co. Map Churchill Township, Ogemaw County

<u>1260</u>	<u>1260</u>	Feet from North Line of Lease
<u>1220</u>	<u>1220</u>	" " East " " "
		" " South " " "
		" " West " " "
<u>1260</u>	<u>1260</u>	Feet from North Line of Section
<u>1220</u>	<u>1220</u>	" " East " " "
		" " South " " "
		" " West " " "

LEGEND

- Location
- ☀ Gas Well
- Oil Well
- ☀ Gas - Distillate Well
- or ○ Dry Hole
- Dry Showing Oil
- ☀ Dry Showing Gas
- ⊗ Abandoned Location
- ☀ or ☀ Abandoned Gas Well
- or ● Abandoned Oil Well
- or ○ Input Well



Remarks: \_\_\_\_\_ Scale \_\_\_\_\_

Submitted by CB Civil Engineer

Approved by \_\_\_\_\_ Division Manager

Approved by \_\_\_\_\_ Vice-President - General Manager

