



Legacy Scout Tickets from Pure Oil Company

8-20-2021

MGRRE_PureOilScoutTickets_Bretz, David A. & Mary_1_21133027710000

MGRRE

Western Michigan University

Follow this and additional works at: <https://scholarworks.wmich.edu/pure>



Part of the Geology Commons

WMU ScholarWorks Citation

MGRRE, "MGRRE_PureOilScoutTickets_Bretz, David A. & Mary_1_21133027710000" (2021). *Legacy Scout Tickets from Pure Oil Company*. 8136.

<https://scholarworks.wmich.edu/pure/8136>

This Document is brought to you for free and open access via ScholarWorks at WMU. It has been accepted for inclusion in Legacy Scout Tickets from Pure Oil Company by an authorized administrator of ScholarWorks at WMU. See the National Digital Catalogue - Science Base Catalogue for more collections submitted by MGRRE.



MGRRE_PureOilScoutTickets_Bretz, David A. & Mary_1_21133027710000

API 21133027710000

Permit Number 2771

Lease Name Bretz, David A. & Mary

Well Number 1

County Osceola

Township 18N

Range 07W

Section 21

2021 DEQ or Pure co_name Ayres, Leon B. Trustee

Pure Number 14

Latitude 43.93946

Longitude -85.14974

The Pure Oil Company
THE PURE OIL COMPANY

DATE 9/19/35

LOCATION REPORT

No. 14

STATE Michigan COUNTY Osceola DIST. Sylvan SEC. 21 TOWN 18N RANGE 7W

WELL No. 1 (SERIAL No. 14) FARM David A. Bartz David A. Bartz ACRES

NAME OF STREAM OR WATERS QUADRANGLE NE-SE-NE
NE-SE-NE

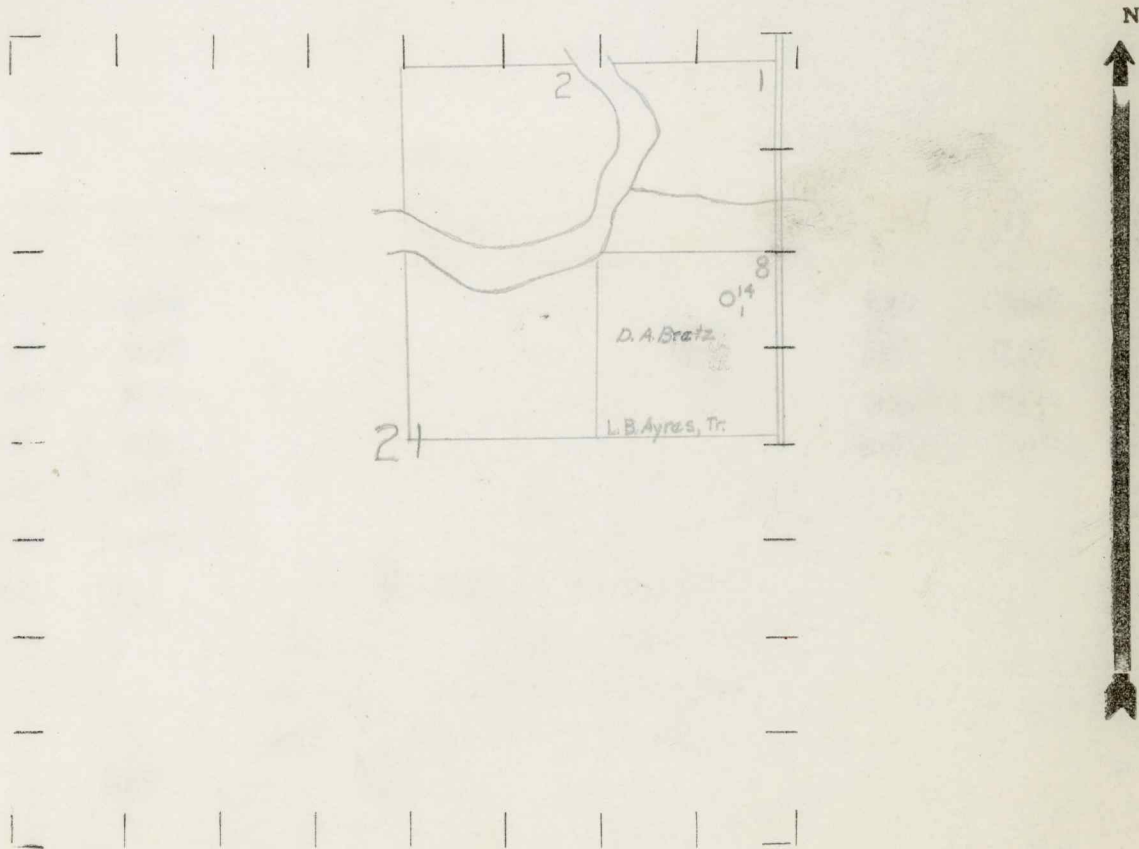
OPERATOR Leon A. Ayres, Trustee Map Sylvan Township, Osceola County
Leon B. Ayres, Tr. Sylvan, Osceola Co.

330 330 Feet from North Line of Farm
330 330 " " East " " "
" " South " " "
" " West " " "
Feet from North Line of Section
330 330 " " East " " "
990 990 " " South " " $\frac{1}{4}$ "
" " West " " "

LEGEND

- LOCATION
- ⊕ RIG
- ⊕ DRILLING
- ☀ GAS WELL
- OIL WELL
- SMALL OIL WELL
- ⊖ DRY HOLE
- ⊖ DRY SHOWING OIL
- ⊖ DRY SHOWING GAS
- ⊖ ABANDONED LOCATION
- ☀ ABANDONED GAS WELL
- ⊖ ABANDONED OIL WELL

NOTE: Below make tracing from map, (when no map is obtainable make sketch) showing farm, center of section, this location with measurements and also wells, dry holes, or other locations in the vicinity of this location.



REMARKS:

SIGNED

R. A. Yusa
Superintendent or Foreman.

COMPLETION RECORD OF WELLS DRILLED BY OTHER OPERATORS

Michigan Producing Division

Date 2-6-36 No. 14
 State Michigan County Osceola Dist. Twp. Sylvan Sec. 21 Twp. 18 N Rge. 7 W
 Well No. 1 (Serial No.) (County No.) 14 Farm David A. Bretz Acres
 Operator Leon B. Ayres Information secured ~~from~~ Scouting Dept. by
 Date well started 10-25-35 Date well completed 1-31-36 Elevation 1018

PRODUCTION RECORD

1st 24 hours natural Dry Hole
 2nd 24 hours natural
 Date of shot No. of quarts From to From to
 Date of acid No. of gallons
 1st 24 hours after acid shot
 2nd 24 hours after acid shot

FORMATION AND CASING RECORD

| Formation | Top | Bottom | Top Pay | Bottom Pay | Remarks | Casing | |
|-------------|------|--------|---------|------------|-----------------------|---------|--------|
| | | | | | | Size | Set at |
| Marshall | 1565 | 1730 | | | | 10" | 597 |
| Red Rock | 1730 | 1802 | | | | 8 1/4" | 1161 |
| Brown Shale | 2625 | 2735 | | | | 6-5/8" | 1824 |
| " " | 2950 | 3298 | | | | 5-3/16" | 3983 |
| Traverse | 3298 | 3871 | | | | | |
| Bell Shale | 3871 | 3930 | | | | | |
| Dundee | 3930 | | 3965 | 3983 | Black water | | |
| | | | 4003 | | Show salt water | | |
| | | | 4012 | | 12 Bailers salt water | | |
| | | | 4015 | | Hole full salt water | | |
| Total Depth | | 4021 | | | | | |

Remarks Small show oil 3300'-3350'.

Signed JWBell