



Western Michigan University
ScholarWorks at WMU

Legacy Scout Tickets from Pure Oil Company

8-20-2021

MGRRE_PureOilScoutTickets_Beall_1_21133051970000

MGRRE

Western Michigan University

Follow this and additional works at: <https://scholarworks.wmich.edu/pure>



Part of the Geology Commons

WMU ScholarWorks Citation

MGRRE, "MGRRE_PureOilScoutTickets_Beall_1_21133051970000" (2021). *Legacy Scout Tickets from Pure Oil Company*. 8146.

<https://scholarworks.wmich.edu/pure/8146>

This Document is brought to you for free and open access via ScholarWorks at WMU. It has been accepted for inclusion in Legacy Scout Tickets from Pure Oil Company by an authorized administrator of ScholarWorks at WMU. See the National Digital Catalogue - Science Base Catalogue for more collections submitted by MGRRE.



MGRRE_PureOilScoutTickets_Beall_1_21133051970000

API 21133051970000

Permit Number 5197

Lease Name Beall

Well Number 1

County Osceola

Township 18N

Range 09W

Section 25

2021 DEQ or Pure co_name Fortney Oil Company

Pure Number 24

Latitude 43.91616

Longitude -85.32594

The Pure Oil Company
COMPLETION RECORD OF WELLS DRILLED BY OTHER OPERATORS

DATE August 4, 1938

LOCATION REPORT

No. 24

STATE Michigan COUNTY Osceola DIST. Cedar TWP Cedar SEC 25 TOWN 18 N RANGE 9 W

WELL No. 1 (SERIAL No. 24) FARM F. F. Beall ACRES

NAME OF STREAM OR WATERS QUADRANGLE SE-SE-SE

OPERATOR Fortney Oil Company Map Cedar Township, Osceola County
Fortney Oil Co. Cedar-Osceola

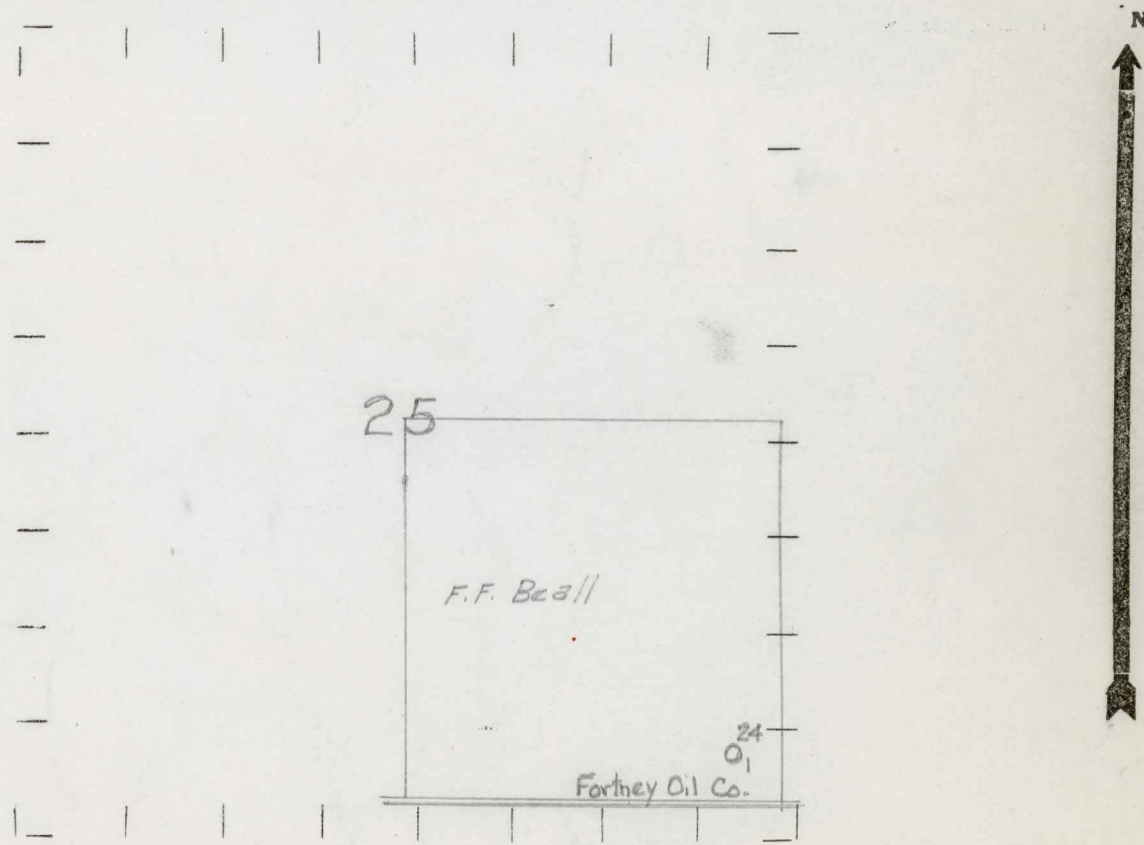
Feet from North Line of Farm
33-330 " " East " " "
330-330 " " South " " "
" " West " " "

Feet from North Line of Section
33-330 " " East " " "
330-330 " " South " " "
" " West " " "

- LOCATION
- ⊕ RIG
- ⊕ DRILLING
- ☀ GAS WELL
- OIL WELL
- ⬮ SMALL OIL WELL

- LEGEND**
- ⊖ DRY HOLE
 - ⬮ DRY SHOWING OIL
 - ⊖ DRY SHOWING GAS
 - ⊖ ABANDONED LOCATION
 - ☀ ABANDONED GAS WELL
 - ⬮ ABANDONED OIL WELL

NOTE: Below make tracing from map, (when no map is obtainable make sketch) showing farm, center of section, this location with measurements and also wells, dry holes, or other locations in the vicinity of this location.



REMARKS:

SIGNED

R. K. J.

Superintendent or Foreman

Michigan Producing Division

Date November 3, 1938 No. 24
 State Mich. County Osceola Distr. Cedar Twp. Cedar Sec. 25 Twp. 18 N Rge. 9 W
 Well No. 1 (Serial No.) (~~24~~) Farm F. F. Beall Acres _____
 Operator Fortney Oil Company Information secured By Scouting Department
 Date well started 8-27-38 Date well completed 10-26-38 Elevation 1147.5

PRODUCTION RECORD

1st 24 hours natural Dry Hole
 2nd 24 hours natural _____
 Date of shot _____ No. of quarts _____ From _____ to _____ From _____ to _____
 Date of acid _____ No. of gallons _____
 1st 24 hours after acid shot _____
 2nd 24 hours after acid shot _____

FORMATION AND CASING RECORD

Formation	Top	Bottom	Top Pay	Bottom Pay	Remarks	Casing	
						Size	Set at
Marshall	1510					10"	713
Red Rock	1535	1789				8-1/4"	1155
Antrim	2950					6-5/8"	1809
Traverse	3262	S.L.M.		3320	Small show oil & gas.		
				3405	Salt water		
Dundee	3869'	S.L.M.	3950	3965	H.F.S.W.		
Total Depth		3965					

Remarks Salt water from 1190' to 1195'. 3285' C.T.M. equals 3295' S.L.M.; 3840' C.T.M. equals 3824' S.L.M.

Signed D. C. Shackelford