



Western Michigan University
ScholarWorks at WMU

Legacy Scout Tickets from Pure Oil Company

8-20-2021

MGRRE_PureOilScoutTickets_Small & Kage_21_21133086220000

MGRRE

Western Michigan University

Follow this and additional works at: <https://scholarworks.wmich.edu/pure>



Part of the Geology Commons

WMU ScholarWorks Citation

MGRRE, "MGRRE_PureOilScoutTickets_Small & Kage_21_21133086220000" (2021). *Legacy Scout Tickets from Pure Oil Company*. 8186.

<https://scholarworks.wmich.edu/pure/8186>

This Document is brought to you for free and open access via ScholarWorks at WMU. It has been accepted for inclusion in Legacy Scout Tickets from Pure Oil Company by an authorized administrator of ScholarWorks at WMU. See the National Digital Catalogue - Science Base Catalogue for more collections submitted by MGRRE.



MGRRE_PureOilScoutTickets_Small & Kage_21_21133086220000

API 21133086220000

Permit Number 8622

Lease Name Small & Kage

Well Number 21

County Osceola

Township 18N

Range 10W

Section 29

2021 DEQ or Pure co_name Mid Michigan Gas well in Stray. Stratigraphic and production data.
orage Company

Pure Number 73

Latitude 43.9270749

Longitude -85.528545

SERIAL NO. 73

STATE Michigan ~~ESH~~ Osceola
CO.

OPERATOR Michigan Consolidated Gas Co.

FARM Small-Kage WELL NO. 21

TWP. Lincoln S. 29 T. 18N R. 10W
~~SURVEY~~

LOC. C NE

WILDCAT FIELD FIELD NAME _____

MAP NO. _____ CO-ORD. _____ ELEV. _____

STATUS _____

Operator's name changed from:
Taggart Brothers Company

NORTH

DATE 12-5-49 SCOUT H. J. G.

THE PURE OIL COMPANY

DATE May 21, 1941

LOCATION REPORT

No. 73

STATE Michigan COUNTY Osceola DIST Lincoln TWP Lincoln SEC. 29 TOWN 18th N RANGE 10th W
WELL No. 21 (SERIAL No. 73) FARM Small Kage ACRES

NAME OF STREAM OR WATERS _____ QUADRANGLE C NE NE

OPERATOR Taggart Brothers Company Map Lincoln Township, Osceola County

1320 1320 Feet from North Line of Farm

1320 1320 " " East " " "

" " South " " "

" " West " " "

Feet from North Line of Section

" " East " " "

1320 1320 " " South 1/4

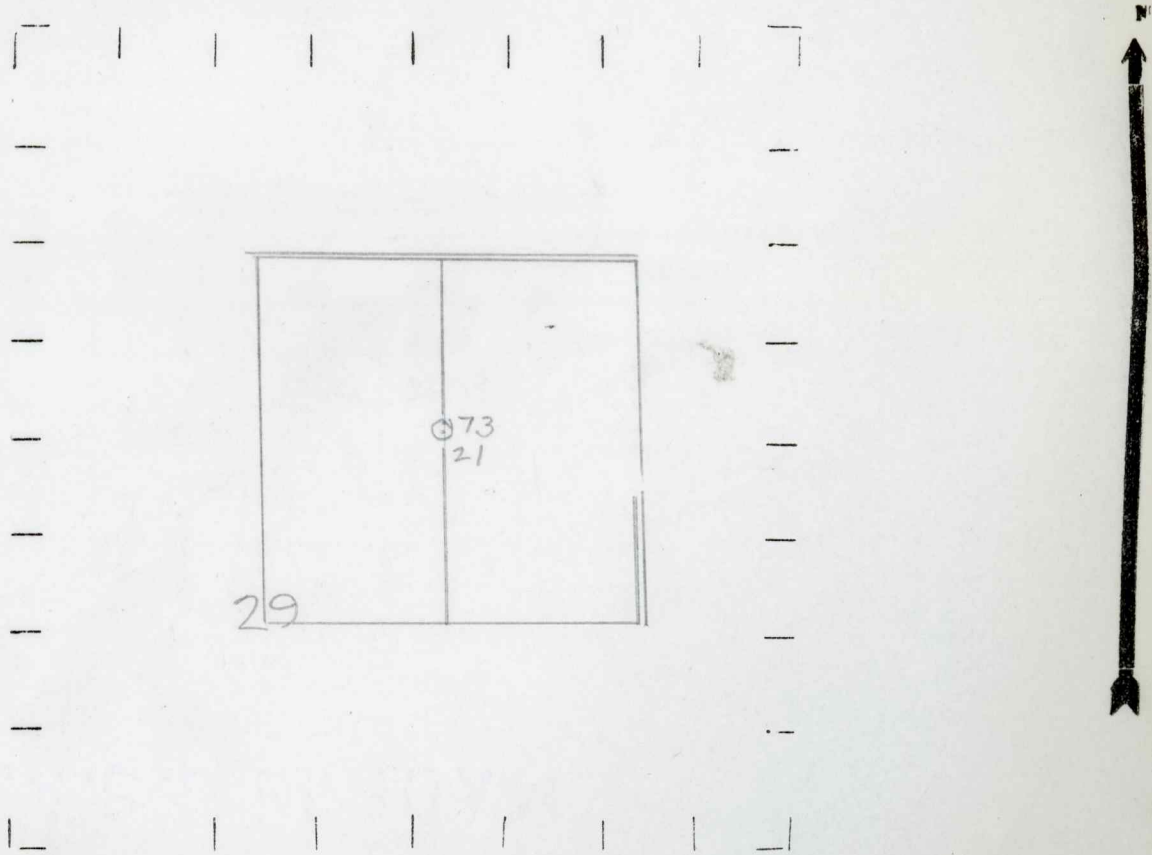
1320 1320 " " West " " "

Sp 5-19-41

LEGEND

- LOCATION
- ⊕ RIG
- ⊕ DRILLING
- ☀ GAS WELL
- OIL WELL
- SMALL OIL WELL
- ⊙ DRY HOLE
- ◆ DRY SHOWING OIL
- ⊙ DRY SHOWING GAS
- ⊙ ABANDONED LOCATION
- ☀ ABANDONED GAS WELL
- ABANDONED OIL WELL

NOTE: Below make tracing from map. (when no map is obtainable make sketch) showing farm, center of section, this location with measurements and also wells, dry holes, or other locations in the vicinity of this location.



REMARKS:

SIGNED

w

Superintendent or Foreman.

