



Western Michigan University
ScholarWorks at WMU

Legacy Scout Tickets from Pure Oil Company

8-20-2021

MGRRE_PureOilScoutTickets_Henry_2_21133087020000

MGRRE

Western Michigan University

Follow this and additional works at: <https://scholarworks.wmich.edu/pure>



Part of the Geology Commons

WMU ScholarWorks Citation

MGRRE, "MGRRE_PureOilScoutTickets_Henry_2_21133087020000" (2021). *Legacy Scout Tickets from Pure Oil Company*. 8192.

<https://scholarworks.wmich.edu/pure/8192>

This Document is brought to you for free and open access via ScholarWorks at WMU. It has been accepted for inclusion in Legacy Scout Tickets from Pure Oil Company by an authorized administrator of ScholarWorks at WMU. See the National Digital Catalogue - Science Base Catalogue for more collections submitted by MGRRE.



MGRRE_PureOilScoutTickets_Henry_2_21133087020000

API 21133087020000

Permit Number 8702

Lease Name Henry

Well Number 2

County Osceola

Township 18N

Range 10W

Section 31

2021 DEQ or Pure co_name Mid Michigan Gas well in Stray. Stratigraphic and production data.
orage Company

Pure Number 81

Latitude 43.9099473

Longitude -85.5539368

THE PURE OIL COMPANY

DATE June 25, 1941

LOCATION REPORT

No. 81

STATE Michigan COUNTY Osceola DIST. Lincoln TWP. Lincoln SEC. 31 TOWN 18 N RANGE 10 W
WELL No. 2 (SERIAL No. 81) FARM Henry ACRES

NAME OF STREAM OR WATERS QUADRANGLE SE SE NW

OPERATOR Gulf Refining Company Map Lincoln Township, Osceola County

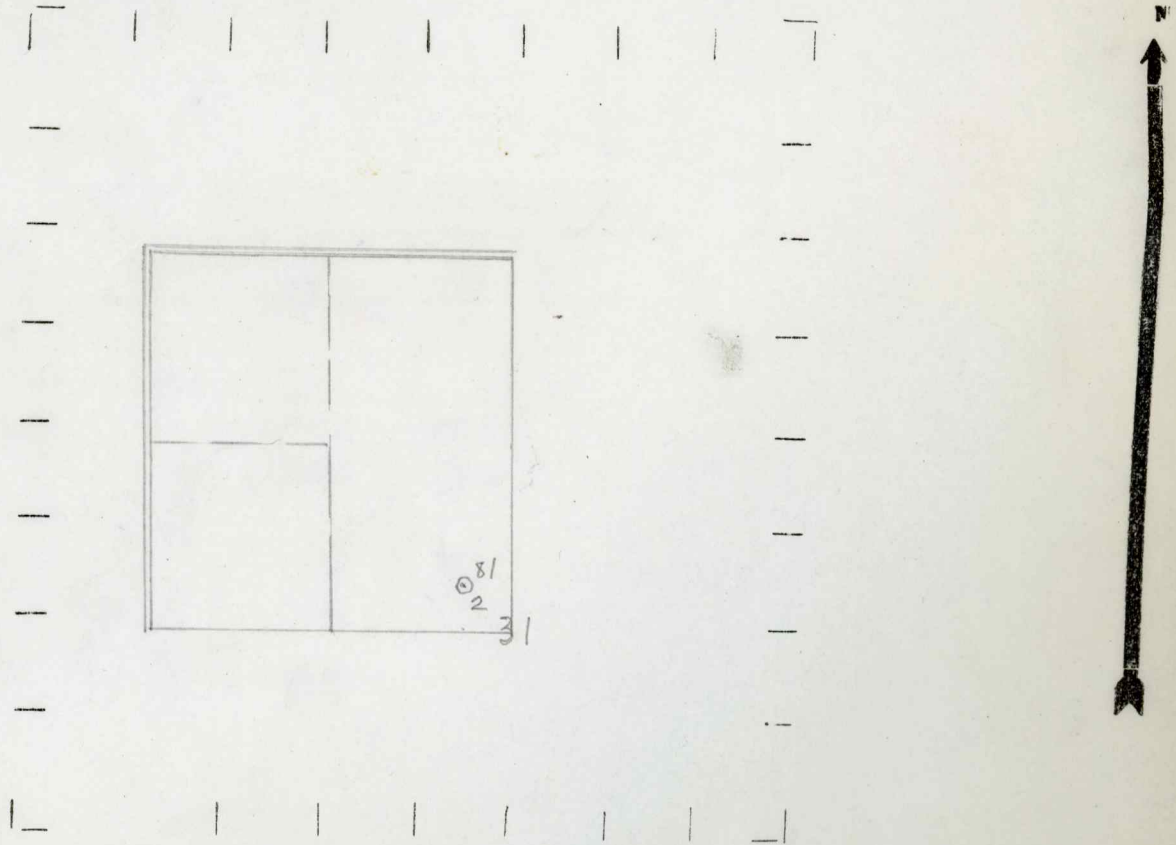
Feet from North Line of Farm
330 330 " " East " " "
330 330 " " South " " "
" " West " " "

Feet from North Line of Section
330 330 " " East " 1/4 "
330 330 " " South " " "
" " West " " "

LEGEND

- LOCATION
- ⊕ RIG
- ⊕ DRILLING
- ☀ GAS WELL
- OIL WELL
- ⬮ SMALL OIL WELL
- ⊖ DRY HOLE
- ⬮ DRY SHOWING OIL
- ☀ DRY SHOWING GAS
- ⊖ ABANDONED LOCATION
- ☀ ABANDONED GAS WELL
- ⬮ ABANDONED OIL WELL

NOTE: Below make tracing from map, (when no map is obtainable make sketch) showing farm, center of section, this location with measurements and also wells, dry holes, or other locations in the vicinity of this location.



REMARKS:

SIGNED

Superintendent or Foreman.

Michigan Producing Division

Date July 30, 1941 No. 81
 State Mich. County Osceola Twp. Lincoln Sec. 31 Twp. 18 N Rge. 10 W
 Well No. 2 (Serial No.) 81 Farm Henry Acres
 Operator Gulf Refining Company Information secured By Scouting Department
 Date well started 6-20-41 Date well completed 7-22-41 Elevation 1132.1

PRODUCTION RECORD

1st 24 hours natural Est. 1680 Barrels
 2nd 24 hours natural
 Date of shot No. of quarts From to From to
 Date of acid No. of gallons
 1st 24 hours after acid shot
 2nd 24 hours after acid shot

FORMATION AND CASING RECORD

Formation	Top	Bottom	Top Pay	Bottom Pay	Remarks	Casing	
						Size	Set at
Stray	1225					6-5/8"	1520
Antrim	2580	2863				5-3/16"	3581
Traverse Line	2908		2910 2963	2915 2973	Show oil and gas. H.F.S.W.		
Dundee	3495						
Monroe	3565		3599 3610	3601 3612	Show oil and gas.		
Total Depth		3612					
Plugged back T.D.		3530					
Perf. w/78 shots 3495-3508 rec. show oil on 8-9-48							
Treated w/1000 gallons acid on 8-10-48							
AIP: Pump 16 bbls. oil & 16 bbls salt water per day							
Oil Well - Dundee							

Remarks Brown Lime at 1125'

Signed D. C. Shackelford