



Western Michigan University
ScholarWorks at WMU

Legacy Scout Tickets from Pure Oil Company

8-20-2021

MGRRE_PureOilScoutTickets_Gingrich, Henry and E._1_na

MGRRE

Western Michigan University

Follow this and additional works at: <https://scholarworks.wmich.edu/pure>



Part of the Geology Commons

WMU ScholarWorks Citation

MGRRE, "MGRRE_PureOilScoutTickets_Gingrich, Henry and E._1_na" (2021). *Legacy Scout Tickets from Pure Oil Company*. 8205.

<https://scholarworks.wmich.edu/pure/8205>

This Document is brought to you for free and open access via ScholarWorks at WMU. It has been accepted for inclusion in Legacy Scout Tickets from Pure Oil Company by an authorized administrator of ScholarWorks at WMU. See the National Digital Catalogue - Science Base Catalogue for more collections submitted by MGRRE.



MGRRE_PureOilScoutTickets_Gingrich, Henry and E._1_na

API na

Permit Number na

Lease Name Gingrich, Henry and E.

Well Number 1

County Osceola

Township 18N

Range 10W

Section 31

2021 DEQ or Pure co_name Weber Oil Co

Pure Number 101

Latitude 43.909006

Longitude -85.5526274

THE PURE OIL COMPANY

DATE July 16, 1941

LOCATION REPORT

No. 101

COMPLETION RECORD OF WELLS DRILLED BY OTHER OPERATORS

STATE Michigan

COUNTY Osceola

TWP Lincoln

SEC 31

TOWN 18 N

RANGE 10 W

WELL No. 2 (SERIAL No. 161) FARM

Henry and Edith Gingrich

ACRES

NAME OF STREAM OR WATERS

QUADRANGLE C N2 SW NW

OPERATOR The Weber Oil Company

Map Lincoln Township, Osceola County

The Weber Oil Co

Low

Lincoln -> Osceola

Feet from North Line of Farm

East " " "

990 990 " " South " " "

660 660 " " West " " "

Feet from North Line of Section

East " " "

990 990 " " South " " 1/4"

660 660 " " West " " "

LEGEND

○ LOCATION

⊕ RIG

⊕ DRILLING

☀ GAS WELL

● OIL WELL

⊕ SMALL OIL WELL

⊕ DRY HOLE

⊕ DRY SHOWING OIL

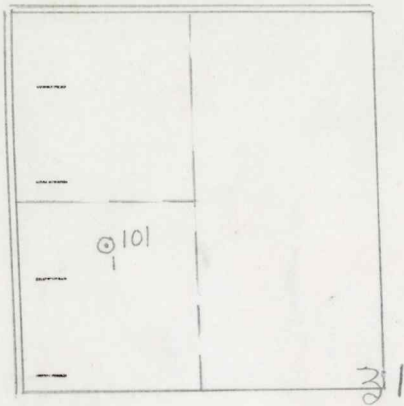
⊕ DRY SHOWING GAS

⊕ ABANDONED LOCATION

☀ ABANDONED GAS WELL

⊕ ABANDONED OIL WELL

NOTE: Below make tracing from map. (when no map is obtainable make sketch) showing farm, center of section, this location with measurements and also wells, dry holes, or other locations in the vicinity of this location.



REMARKS:

SIGNED

W

Superintendent or Foreman.

Date April 1, 1942 No. 101
 State Mich. County Osceola Dist. Lincoln Sec. 31 Twp. 18 N Rge. 10 W
 Well No. 2 (Serial No.) 101 Farm Henry Gingrich Acres _____
 Operator The Ohio Oil Company Information secured from Scouting Department
 Date well started Not started. Date well completed Not completed. Elevation _____

PRODUCTION RECORD

1st 24 hours natural Location abandoned.
 2nd 24 hours natural _____
 Date of shot _____ No. of quarts _____ From _____ to _____ From _____ to _____
 Date of acid _____ No. of gallons _____
 1st 24 hours after acid shot _____
 2nd 24 hours after acid shot _____

FORMATION AND CASING RECORD

Formation	Top	Bottom	Top Pay	Bottom Pay	Remarks	Casing	
						Size	Set at
					Location abandoned 3-30-42.		

Remarks _____

Signed D. C. Shackelford