



Western Michigan University  
ScholarWorks at WMU

---

Legacy Scout Tickets from Pure Oil Company

---

8-20-2021

**MGRRE\_PureOilScoutTickets\_Stedman, Paul  
N\_2\_21133088820000**

MGRRE  
*Western Michigan University*

Follow this and additional works at: <https://scholarworks.wmich.edu/pure>



Part of the Geology Commons

---

#### WMU ScholarWorks Citation

MGRRE, "MGRRE\_PureOilScoutTickets\_Stedman, Paul N\_2\_21133088820000" (2021). *Legacy Scout Tickets from Pure Oil Company*. 8232.  
<https://scholarworks.wmich.edu/pure/8232>

This Document is brought to you for free and open access via ScholarWorks at WMU. It has been accepted for inclusion in Legacy Scout Tickets from Pure Oil Company by an authorized administrator of ScholarWorks at WMU. See the National Digital Catalogue - Science Base Catalogue for more collections submitted by MGRRE.



---

**MGRRE\_PureOilScoutTickets\_Stedman, Paul N\_2\_21133088820000**

API 21133088820000

Permit Number 8882

Lease Name Stedman, Paul N

Well Number 2

County Osceola

Township 18N

Range 10W

Section 29

2021 DEQ or Pure co\_name Mid Michigan Gas well in Stray. Stratigraphic and production data.  
orage Company

Pure Number 136

Latitude 43.9293217

Longitude -85.5400255

DATE August 20, 1941

LOCATION REPORT

No. 136

COMPLETION RECORD OF WELLS DRILLED BY OTHER OPERATORS

STATE Michigan COUNTY Osceola DIST Lincoln TWP Lincoln SEC 229 TOWN 18 N RANGE 10 W

WELL No. 22 (SERIAL No. 136) FARM Paul N. Stedman ACRES

NAME OF STREAM OR WATERS QUADRANGLE C 1/2 NW NW - NW

OPERATOR The Ohio Oil Company Map Lincoln Township, Osceola County

330 330 Feet from North Line of Farm

660 660 " " East " " "

" " South " " "

660 660 " " West " " "

330 330 Feet from North Line of Section 1/4 X

" " East " " "

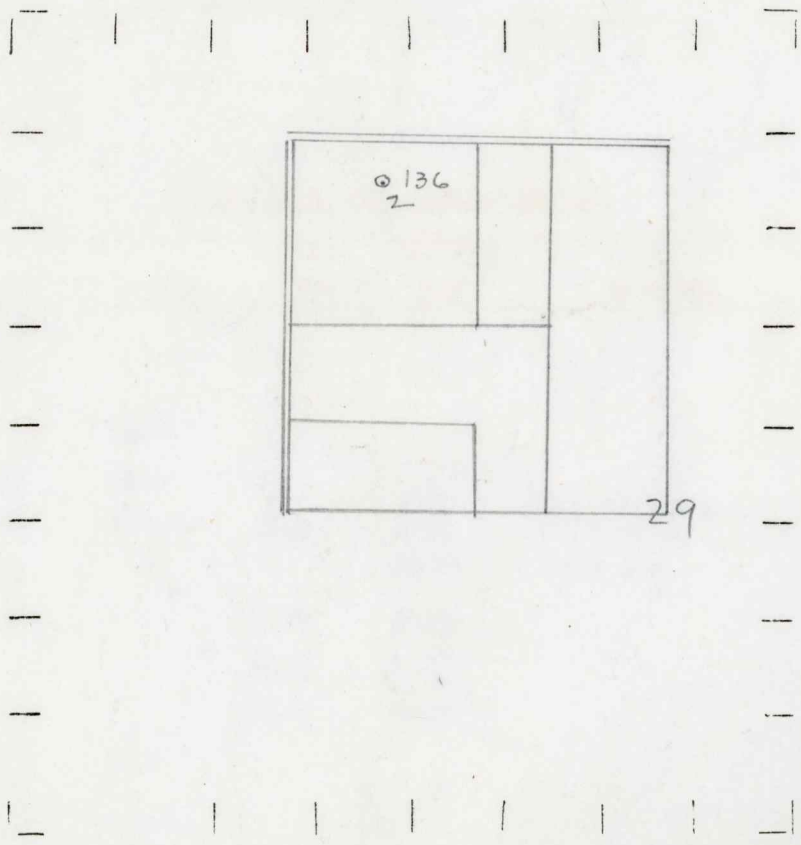
" " South " " "

660 660 " " West " " "

LEGEND

- LOCATION
- ⊕ RIG
- ⊕ DRILLING
- ☀ GAS WELL
- OIL WELL
- SMALL OIL WELL
- ⊙ DRY HOLE
- DRY SHOWING OIL
- ☀ DRY SHOWING GAS
- ⊙ ABANDONED LOCATION
- ☀ ABANDONED GAS WELL
- ABANDONED OIL WELL

NOTE: Below make tracing from map. (when no map is obtainable make sketch) showing farm, center of section, this location with measurements and also wells, dry holes, or other locations in the vicinity of this location.



REMARKS:

.....

SIGNED

W

Superintendent or Foreman.

Date 10-15-41 No. 136  
 State Mich. County Osceola Dist. XXXX  
 Twp. Lincoln Sec. 29 Twp. 18 N Rge. 10 W  
 Well No. 2 (Serial No.) 136 Farm Paul N. Stedman Acres \_\_\_\_\_  
 Operator The Ohio Oil Company Information secured By Scouting Department  
 Date well started 8-25-41 Dated well completed 10-9-41 Elevation 1156.8

PRODUCTION RECORD

1st 24 hours natural 1800 Barrels  
 2nd 24 hours natural \_\_\_\_\_  
 Date of shot \_\_\_\_\_ No. of quarts \_\_\_\_\_ From \_\_\_\_\_ to \_\_\_\_\_ From \_\_\_\_\_ to \_\_\_\_\_  
 Date of acid \_\_\_\_\_ No. of gallons \_\_\_\_\_  
 1st 24 hours after acid shot \_\_\_\_\_  
 2nd 24 hours after acid shot \_\_\_\_\_

FORMATION AND CASING RECORD

Formation	Top	Bottom	Top Pay	Bottom Pay	Remarks	Casing	
						Size	Set at
<del>Brown Dolomite</del>	<del>1120</del>						
Stray	1215					10"	400
Marshall	1348					6-5/8"	1752
Red Rock		1478				5-3/16"	3553
Antrim	2670	2890					
Traverse Lime	2920	S.L.M.	2940	2930 2950	Oil and gas. Salt water.		
Dundee	3483	"		3483	Show gas.		
Monroe	3555		3587	3589			
			3595	3597			
			3608	3609			
Total Depth		3609					
Plugged Back		3598					

Remarks 2992' CTM equals 2997' SLM.