



Western Michigan University
ScholarWorks at WMU

Legacy Scout Tickets from Pure Oil Company

8-20-2021

MGRRE_PureOilScoutTickets_Auten, Fern L Comm_2_21133089050000

MGRRE

Western Michigan University

Follow this and additional works at: <https://scholarworks.wmich.edu/pure>



Part of the Geology Commons

WMU ScholarWorks Citation

MGRRE, "MGRRE_PureOilScoutTickets_Auten, Fern L Comm_2_21133089050000" (2021). *Legacy Scout Tickets from Pure Oil Company*. 8236.

<https://scholarworks.wmich.edu/pure/8236>

This Document is brought to you for free and open access via ScholarWorks at WMU. It has been accepted for inclusion in Legacy Scout Tickets from Pure Oil Company by an authorized administrator of ScholarWorks at WMU. See the National Digital Catalogue - Science Base Catalogue for more collections submitted by MGRRE.



MGRRE_PureOilScoutTickets_Auten, Fern L Comm_2_21133089050000

API 21133089050000

Permit Number 8905

Lease Name Auten, Fern L Comm

Well Number 2

County Osceola

Township 18N

Range 10W

Section 29

**2021 DEQ or Pure co_name Mid Michigan Gas well in Stray. Stratigraphic and production data.
orage Company**

Pure Number 140

Latitude 43.9276074

Longitude -85.5351753

WELL REPORT - OUTSIDE OPERATIONS THE PURE OIL COMPANY

SERIAL NO. 140

1404

STATE Michigan ^{FSEK} CO. Osceola

OPERATOR Ohio Oil Co.

FARM Fern L. Auten Comm. WELL NO. 2

TWP. Lincoln S. 29 T. 18N R. 10W

LOC. C S 1/2 NE NW

WILDCAT FIELD FIELD NAME

MAP NO. CO-ORD. ELEV.

STATUS Plugged and Abandoned 5-26-52

Total Depth 3569'

Plug Back T.D. 3530'

NORTH

DATE 7-22-52 SCOUT DRS

DATE August 27, 1941

LOCATION REPORT

No. 140*

STATE Michigan

COUNTY Osceola

DIST Lincoln

TWP. Lincoln

SEC. 29

TOWN 18 N

RANGE 10 W

WELL No. 22 (SERIAL No. 140) FARM

PRECX Fern L. Auten (Comm.)

ACRES

NAME OF STREAM OR WATERS

QUADRANGLE C 3 1/2 - NE NW - NW

OPERATOR Ohio Oil Company

Map

Lincoln Township, Osceola County

Lincoln - Osceola

990 990 Feet from North Line of Farm

660 660 " " East " " "

" " South " " "

" " West " " "

990 990 Feet from North Line of Section 1/4 1/4

660 660 " " East " " "

" " South " " "

" " West " " "

Rig

LEGEND

○ LOCATION

⊙ DRY HOLE

⊕ RIG

● DRY SHOWING OIL

⊕ DRILLING

⊙ DRY SHOWING GAS

⊙ GAS WELL

⊙ ABANDONED LOCATION

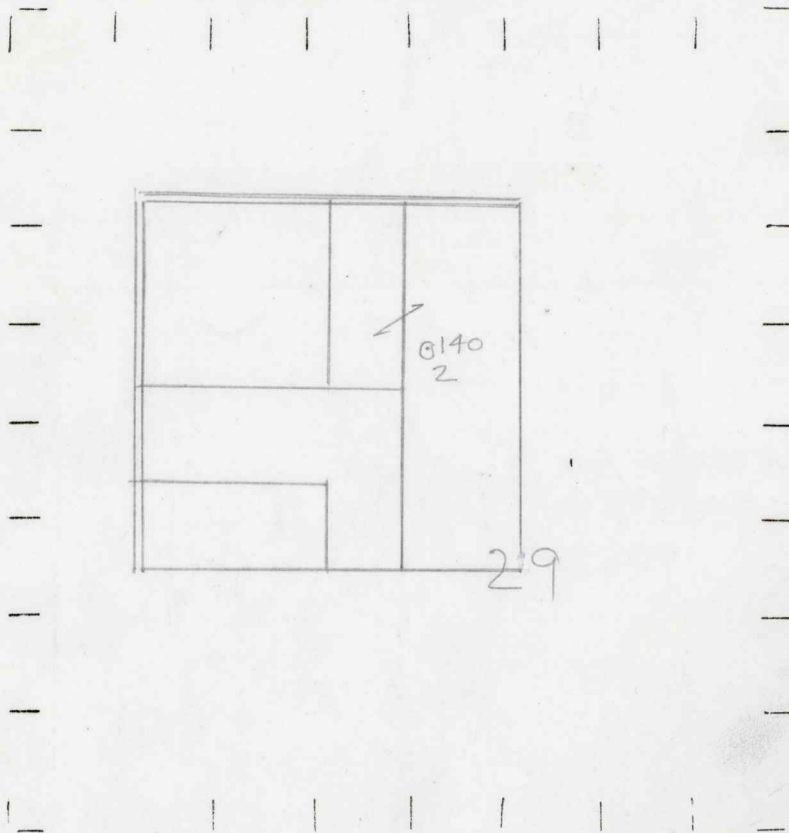
● OIL WELL

⊙ ABANDONED GAS WELL

● SMALL OIL WELL

● ABANDONED OIL WELL

NOTE: Below make tracing from map, (when no map is obtainable make sketch) showing farm, center of section, this location with measurements and also wells, dry holes, or other locations in the vicinity of this location.



REMARKS:

.....
.....
.....

SIGNED

W

Superintendent or Foreman.

OBEVLOB OFF COMBINA
 NAME OF STATE OF MICHIGAN
 WELL NO. 35 (SERIAL NO. 110) LYVEN
 STATE OF MICHIGAN
 DISTRICT OF LINCOLN
 COUNTY OF OSCEOLA
 TWP. OF LINCOLN
 SEC. 29
 RGE. 10-W
 No. 140

Date **October 22, 1941** No. **140**
 State **Mich.** County **Osceola** Dist. **Lincoln**
 Twp. **18-N** Sec. **29** Rge. **10-W**
 Well No. **2** (Serial No.) (County No.) **140** Farm **F. L. Auten (Comm.)** Acres
 Operator **Weber Oil Company** Information secured from **Scouting Department**
 Date well started **9-3-41** Date well completed **10-11-41** Elevation **1092.5**

PRODUCTION RECORD

1st 24 hours natural **Estimated 2400 bbls.**
 2nd 24 hours natural
 Date of shot No. of quarts From to From to
 Date of acid No. of gallons
 shot
 1st 24 hours after acid
 shot
 2nd 24 hours after acid

FORMATION AND CASING RECORD

Formation	Top	Bottom	Top Pay	Bottom Pay	Remarks	Casing	
						Size	Set at
Brown Dolomite	1051					10"	408
Michigan Stray	1158					7"	1480
Antrim	2545					5-3/16"	3512
Traverse Lime	2875 SLM				Show Oil and Gas at 2875'-salt water at 3130'		
Dundee	3433 CTM						
Monroe	3505 CTM		3533	3537			
			3546	3549			
Total Depth		3549					
New Total Depth		3569					
P.B.T.D.		3530					

Remarks **2754 CTM equals 2749 SLM**

Signed **Dean C. Shackelford**