



Western Michigan University
ScholarWorks at WMU

Legacy Scout Tickets from Pure Oil Company

8-20-2021

MGRRE_PureOilScoutTickets_Gabel, Louie & Clara M_2_21133090760000

MGRRE

Western Michigan University

Follow this and additional works at: <https://scholarworks.wmich.edu/pure>



Part of the Geology Commons

WMU ScholarWorks Citation

MGRRE, "MGRRE_PureOilScoutTickets_Gabel, Louie & Clara M_2_21133090760000" (2021). *Legacy Scout Tickets from Pure Oil Company*. 8267.

<https://scholarworks.wmich.edu/pure/8267>

This Document is brought to you for free and open access via ScholarWorks at WMU. It has been accepted for inclusion in Legacy Scout Tickets from Pure Oil Company by an authorized administrator of ScholarWorks at WMU. See the National Digital Catalogue - Science Base Catalogue for more collections submitted by MGRRE.



MGRRE_PureOilScoutTickets_Gabel, Louie & Clara M_2_21133090760000

API 21133090760000

Permit Number 9076

Lease Name Gabel, Louie & Clara M

Well Number 2

County Osceola

Township 18N

Range 10W

Section 31

2021 DEQ or Pure co_name Mid Michigan Gas well in Stray. Stratigraphic and production data.
orage Company

Pure Number 187

Latitude 43.9063437

Longitude -85.5552005

THE PURE OIL COMPANY

COMPLETION RECORD OF WELLS DRILLED BY OTHER OPERATORS

DATE 10-15-41

LOCATION REPORT

No. 187

STATE Michigan COUNTY Osceola ^{Michigan Producing} ~~RISK~~ TWP Lincoln ^{Division} SEC. 31 TOWN 18 N RANGE 10 W

WELL No. 2 (SERIAL No. 187) FARM Louie & Clara M. Gabel ACRES

NAME OF STREAM OR WATERS QUADRANGLE C S 1/2 NE SW

OPERATOR The Ohio Oil Company Map Lincoln Township, Osceola County

990 Feet from North Line of Farm

660 " " East " " "

" " South " " "

660 " " West " " "
1/4

990 Feet from North Line of Section

660 " " East " " "

" " South " " "

" " West " " "

LEGEND

○ LOCATION

⊙ DRY HOLE

⊕ RIG

⊙ DRY SHOWING OIL

⊕ DRILLING

⊙ DRY SHOWING GAS

☀ GAS WELL

⊙ ABANDONED LOCATION

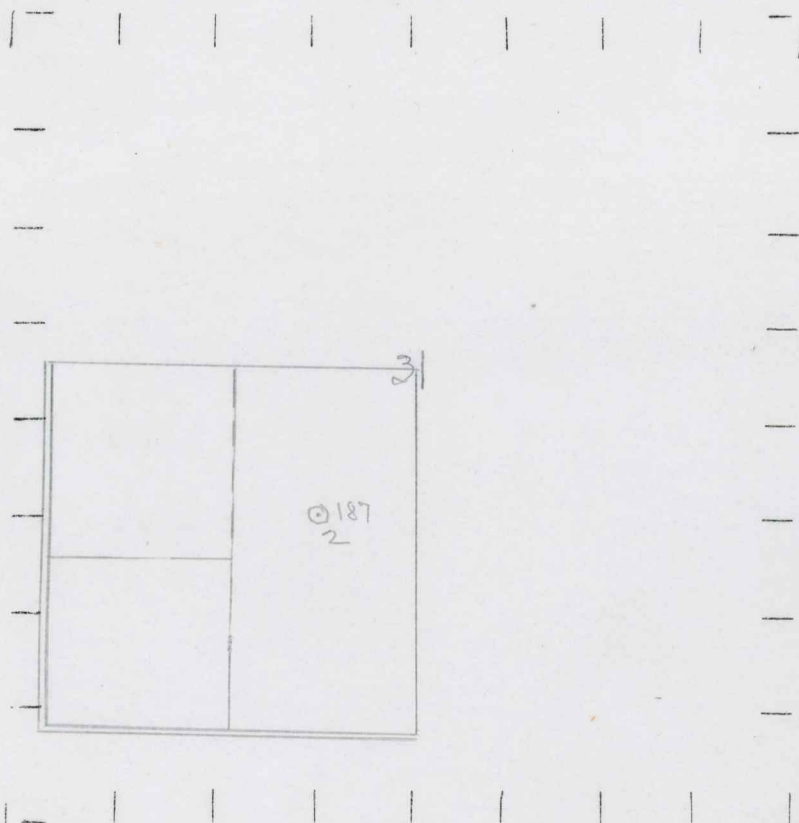
● OIL WELL

☀ ABANDONED GAS WELL

● SMALL OIL WELL

● ABANDONED OIL WELL

NOTE: Below make tracing from map, (when no map is obtainable make sketch) showing farm, center of section, this location with measurements and also wells, dry holes, or other locations in the vicinity of this location.



REMARKS:

SIGNED

W

Superintendent or Foreman.

J

OPERATOR The Ohio Oil Company No. 187
 NAME OF SURVEYOR OR MAINTENANCE OSCEOLA COUNTY
 WELL NO. 2 (SERIAL NO. 187) OSCEOLA COUNTY
 STATE OHIO OSCEOLA COUNTY Lincoln Twp. 31 18 N 10 W

Date December 31, 1941 No. 187
 State Mich. County Osceola Dist. Lincoln Sec. 31 Twp. 18 N Rge. 10 W
 Well No. 2 (Serial No. 187) Farm Louis Gabel Acres _____
 Operator The Ohio Oil Company Information secured By Scouting Department
 Date well started 11-7-41 Date well completed 12-29-41 Elevation 1166.6

PRODUCTION RECORD

1st 24 hours natural 2328 Barrels
 2nd 24 hours natural _____
 Date of shot _____ No. of quarts _____ From _____ to _____ From _____ to _____
 Date of acid _____ No. of gallons _____
 1st 24 hours after acid shot _____
 2nd 24 hours after acid shot _____

FORMATION AND CASING RECORD

Formation	Top	Bottom	Top Pay	Bottom Pay	Remarks	Casing	
						Size	Set at
Brown Dolomite	1156					10"	402
Stray	1242					6-5/8"	1527
Berea	2385	2419				5-3/16"	3607
Antrim	2725	2927					
Traverse Lime	2950						
Dundee	3536	S.L.M.					
Monroe	3609		3642				
			3648	3649			
Total Depth		3649					

Remarks _____

Signed D. C. Shackelford