



Western Michigan University
ScholarWorks at WMU

Legacy Scout Tickets from Pure Oil Company

8-20-2021

**MGRRE_PureOilScoutTickets_Foster, O R et
al_1_21133128580000**

MGRRE
Western Michigan University

Follow this and additional works at: <https://scholarworks.wmich.edu/pure>



Part of the Geology Commons

WMU ScholarWorks Citation

MGRRE, "MGRRE_PureOilScoutTickets_Foster, O R et al_1_21133128580000" (2021). *Legacy Scout Tickets from Pure Oil Company*. 8613.
<https://scholarworks.wmich.edu/pure/8613>

This Document is brought to you for free and open access via ScholarWorks at WMU. It has been accepted for inclusion in Legacy Scout Tickets from Pure Oil Company by an authorized administrator of ScholarWorks at WMU. See the National Digital Catalogue - Science Base Catalogue for more collections submitted by MGRRE.



MGRRE_PureOilScoutTickets_Foster, O R et al_1_21133128580000

API 21133128580000

Permit Number 12858

Lease Name Foster, O R et al

Well Number 1

County Osceola

Township 18N

Range 08W

Section 12

2021 DEQ or Pure co_name Ashby Drilling Company

Pure Number 595

Latitude 43.96937

Longitude -85.21131

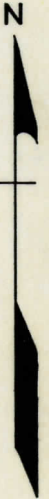
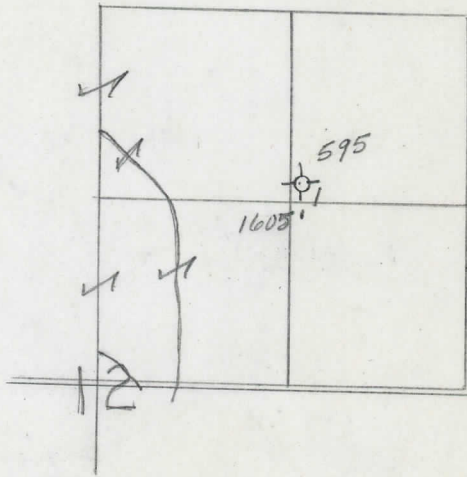
THE PURE OIL COMPANY

Date December 24, 1946 Corrected LOCATION REPORT A.F.E. No. O.R. Foster et al
 Division Mich. Producing District _____ Lease O. R. Foster, et al
 Acres _____ Lease No. _____ Elevation _____ Well No. 1 (Serial No. 595)
 Quadrangle SW NE NE Sec. 12 Twp. 18 N Rge. 8 W Osceola Osceola
 Survey _____ County Osceola State Michigan
 Operator Ashby Drilling Co. Map Osceola Township, Osceola County

<u>1220</u>	<u>1220</u>	Feet from North Line of Lease
<u>1220</u>	<u>1220</u>	" " East " " "
		" " South " " "
		" " West " " "
<u>1220</u>	<u>1220</u>	Feet from North Line of Section
<u>1220</u>	<u>1220</u>	" " East " " "
		" " South " " "
		" " West " " "

LEGEND

- Location
- ☀ Gas Well
- Oil Well
- ☀ Gas - Distillate Well
- or ○ Dry Hole
- or ● Dry Showing Oil
- ☀ Dry Showing Gas
- ⊗ Abandoned Location
- ☀ or ☀ Abandoned Gas Well
- or ● Abandoned Oil Well
- or ○ Input Well



corrected location & farm name

Remarks: Corrected location and farm name. Scale _____

Submitted by _____ Civil Engineer Approved by _____ Division Manager
 Approved by _____ Vice-President - General Manager

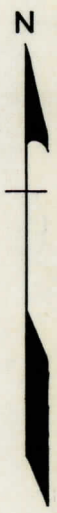
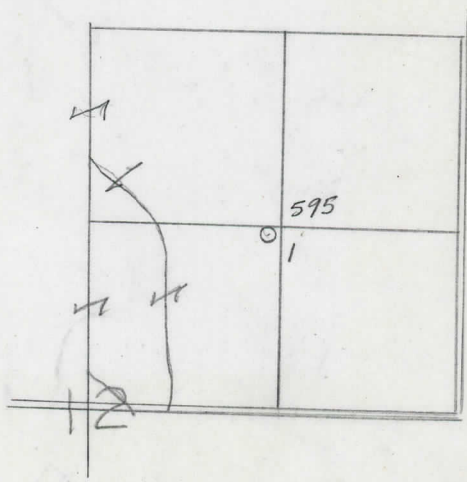
Division Michigan Date December 18, 1946 LOCATION REPORT
 District Osceola THE PURE OIL COMPANY
 Date Dec. 18, 1946 LOCATION REPORT
 Division Mich. Producing District _____ Lease Lillie Parker et al
Lillie Parker, et al
 Acres _____ Lease No. _____ Elevation _____ Well No. 1 (Serial No. 595)
 Quadrangle NE SW NE Sec. 12 Twp. 18 N Rge. 8 W Osceola
Osceola Osceola
 Survey _____ County Osceola State Michigan
 Operator Ashby Drilling Co. Map Osceola Township, Osceola County

Feet from North Line of Lease	
<u>1220</u>	<u>1220</u>
" "	East " "
<u>1220</u>	<u>1220</u>
" "	South " "
<u>1220</u>	<u>1220</u>
" "	West " "
Feet from North Line of Section	
<u>1220</u>	<u>1220</u>
" "	East " " <u>1/4</u>
<u>1220</u>	<u>1220</u>
" "	South " "
<u>1220</u>	<u>1220</u>
" "	West " "

LEGEND

- Location
- ☀ Gas Well
- Oil Well
- ☀ Gas - Distillate Well
- ∅ or ○ Dry Hole
- Dry Showing Oil
- ☀ Dry Showing Gas
- ⊗ Abandoned Location
- ☀ or ☀ Abandoned Gas Well
- or ● Abandoned Oil Well
- or ○ Input Well

low



Remarks: _____ Scale _____

Submitted by CB Civil Engineer Approved by _____ Division Manager
 Approved by _____ Vice-President - General Manager