



Western Michigan University
ScholarWorks at WMU

Legacy Scout Tickets from Pure Oil Company

8-20-2021

MGRRE_PureOilScoutTickets_Cody, Leo et al_1_21133128650000

MGRRE

Western Michigan University

Follow this and additional works at: <https://scholarworks.wmich.edu/pure>



Part of the Geology Commons

WMU ScholarWorks Citation

MGRRE, "MGRRE_PureOilScoutTickets_Cody, Leo et al_1_21133128650000" (2021). *Legacy Scout Tickets from Pure Oil Company*. 8615.

<https://scholarworks.wmich.edu/pure/8615>

This Document is brought to you for free and open access via ScholarWorks at WMU. It has been accepted for inclusion in Legacy Scout Tickets from Pure Oil Company by an authorized administrator of ScholarWorks at WMU. See the National Digital Catalogue - Science Base Catalogue for more collections submitted by MGRRE.



MGRRE_PureOilScoutTickets_Cody, Leo et al_1_21133128650000

API 21133128650000

Permit Number 12865

Lease Name Cody, Leo et al

Well Number 1

County Osceola

Township 17N

Range 09W

Section 16

**2021 DEQ or Pure co_name Union Drilling and Producing Company and AmeriCrude Oil
Company**

Pure Number 597

Latitude 43.86058

Longitude -85.39014

THE PURE OIL COMPANY LOCATION REPORT

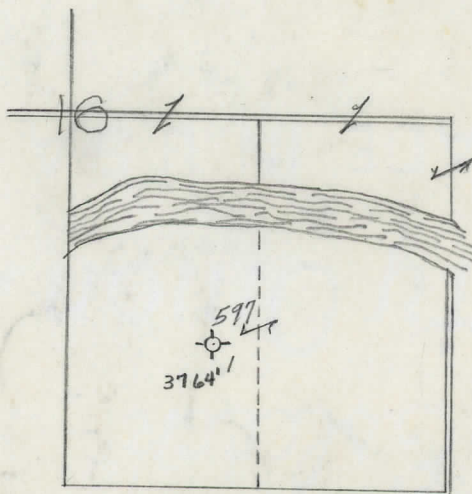
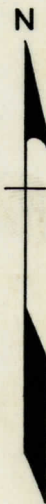
Date Dec. 24, 1946 A.F.E. No. _____
 Division Mich. Producing District _____ Lease Leo Cody, et al
 Acres _____ Lease No. _____ Elevation _____ Well No. 1 (Serial No. 597)
 Quadrangle NE SW SE Sec. 16 Twp. 17 N Rge. 9 W Dist. Hersey
 Survey _____ County Osceola State Michigan
 Operator Union Drilling & Producing Co. Map Hersey Township, Osceola County

Feet from North Line of Lease					
990	990	"	"	East	" " "
990	990	"	"	South	" " "
		"	"	West	" " "
Feet from North Line of Section					
990	990	"	"	East	" " "
990	990	"	"	South	" " <u>1/4</u>
		"	"	West	" " "

Loc.

LEGEND

- ☀ Gas Well
- Oil Well
- ☀ Gas - Distillate Well
- ∅ or ○ Dry Hole
- Dry Showing Oil
- Location
- ☉ Dry Showing Gas
- ⊗ Abandoned Location
- ☀ or ☀ Abandoned Gas Well
- or ● Abandoned Oil Well
- or ○ Input Well



Scale _____

Remarks: _____

Submitted by CB Civil Engineer Approved by _____ Division Manager
 Approved by _____ Vice-President - General Manager