



Western Michigan University
ScholarWorks at WMU

Legacy Scout Tickets from Pure Oil Company

8-20-2021

MGRRE_PureOilScoutTickets_Shell Petroleum aka Retzloff, F._L338_None

MGRRE

Western Michigan University

Follow this and additional works at: <https://scholarworks.wmich.edu/pure>



Part of the Geology Commons

WMU ScholarWorks Citation

MGRRE, "MGRRE_PureOilScoutTickets_Shell Petroleum aka Retzloff, F._L338_None" (2021). *Legacy Scout Tickets from Pure Oil Company*. 8661.

<https://scholarworks.wmich.edu/pure/8661>

This Document is brought to you for free and open access via ScholarWorks at WMU. It has been accepted for inclusion in Legacy Scout Tickets from Pure Oil Company by an authorized administrator of ScholarWorks at WMU. See the National Digital Catalogue - Science Base Catalogue for more collections submitted by MGRRE.



MGRRE_PureOilScoutTickets_Shell Petroleum aka Retzloff, F._L338_None

API None

Permit Number None

Lease Name Shell Petroleum aka Retzloff, F.

Well Number L338

County Ottawa

Township 07N

Range 15W

Section 11

2021 DEQ or Pure co_name Shell Petroleum Corporation

Pure Number 30

Latitude 43.0084866

Longitude -86.0555149

THE PURE OIL COMPANY

LOCATION REPORT

DATE April 4, 1938

No. 30

STATE Michigan COUNTY Ottawa DIST. Polkton TWP. Polkton SEC. 11 TOWN 7 N RANGE 15 W

WELL No. 4 (SERIAL No. 30) FARM F. Retzlaff ACRES

NAME OF STREAM OR WATERS _____ QUADRANGLE NE NW NE

OPERATOR Shell Petroleum Corporation Map Polkton Township, Ottawa County

50 50 Feet from North Line of Farm
Shell Pet. Corp.

20 20 " " East " " "

" " South " " "

" " West " " "

50 50 Feet from North Line of Section

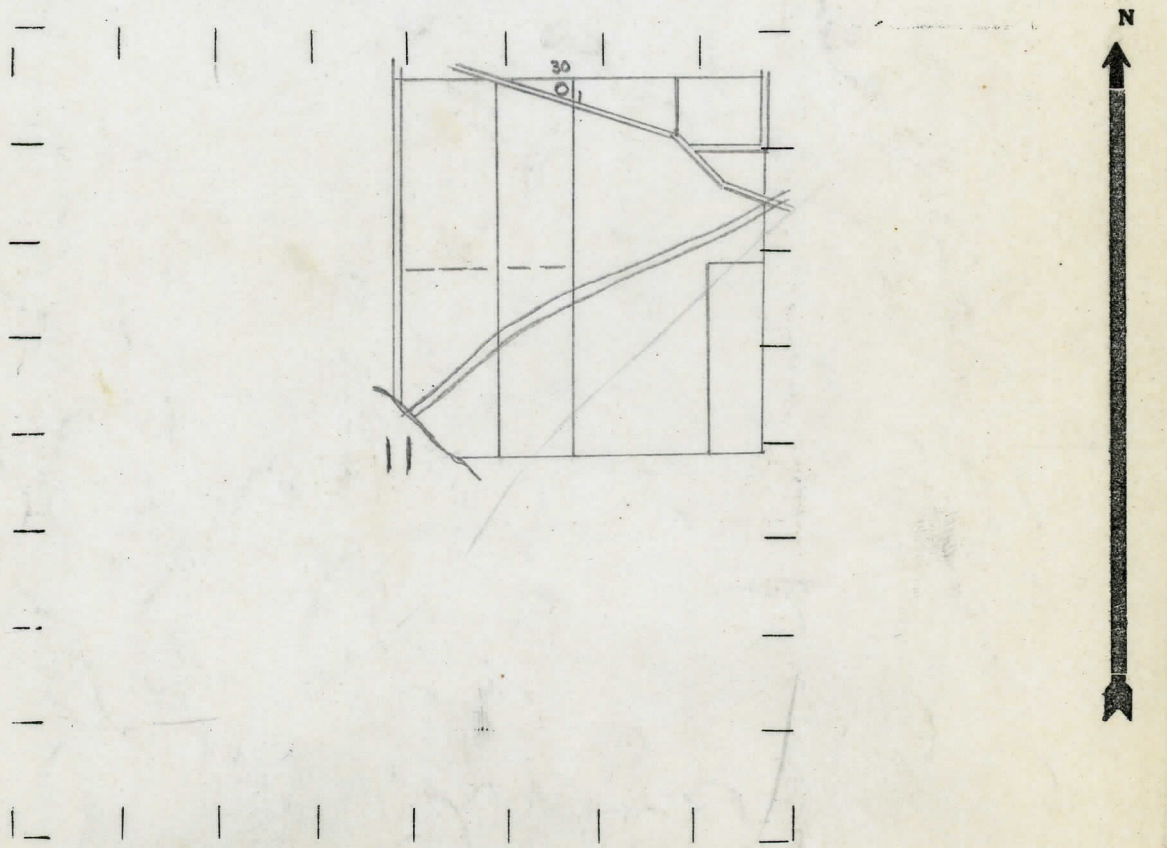
" " East " " "

" " South " " "

13001300 " " West "1/4"

- LEGEND**
- LOCATION
 - ⊙ RIG
 - ⊕ DRILLING
 - ☀ GAS WELL
 - OIL WELL
 - ⬮ SMALL OIL WELL
 - ⊖ DRY HOLE
 - ⬮ DRY SHOWING OIL
 - ⊖ DRY SHOWING GAS
 - ⊖ ABANDONED LOCATION
 - ☀ ABANDONED GAS WELL
 - ⬮ ABANDONED OIL WELL

NOTE: Below make tracing from map, (when no map is obtainable make sketch) showing farm, center of section, this location with measurements and also wells, dry holes, or other locations in the vicinity of this location.



REMARKS: Core Test

SIGNED P. A. Yager
Superintendent or Foreman.