

Coronavirus

MI SAFE START

CONTAIN COVID

RESOURCES

PRESS RELEASES

DONATE

VIDEO UPDATES

CORONAVIRUS / MICHIGAN DATA / CORONAVIRUS SYMPTOMS

Coronavirus Symptoms

Michigan Syndromic Surveillance - COVID-19

Syndromic Surveillance System data is obtained from approximately 216 facilities participating in syndromic surveillance (139 Emergency Department, 77 Urgent Care) across the State of Michigan.

DESCRIPTION OF THE QUERY

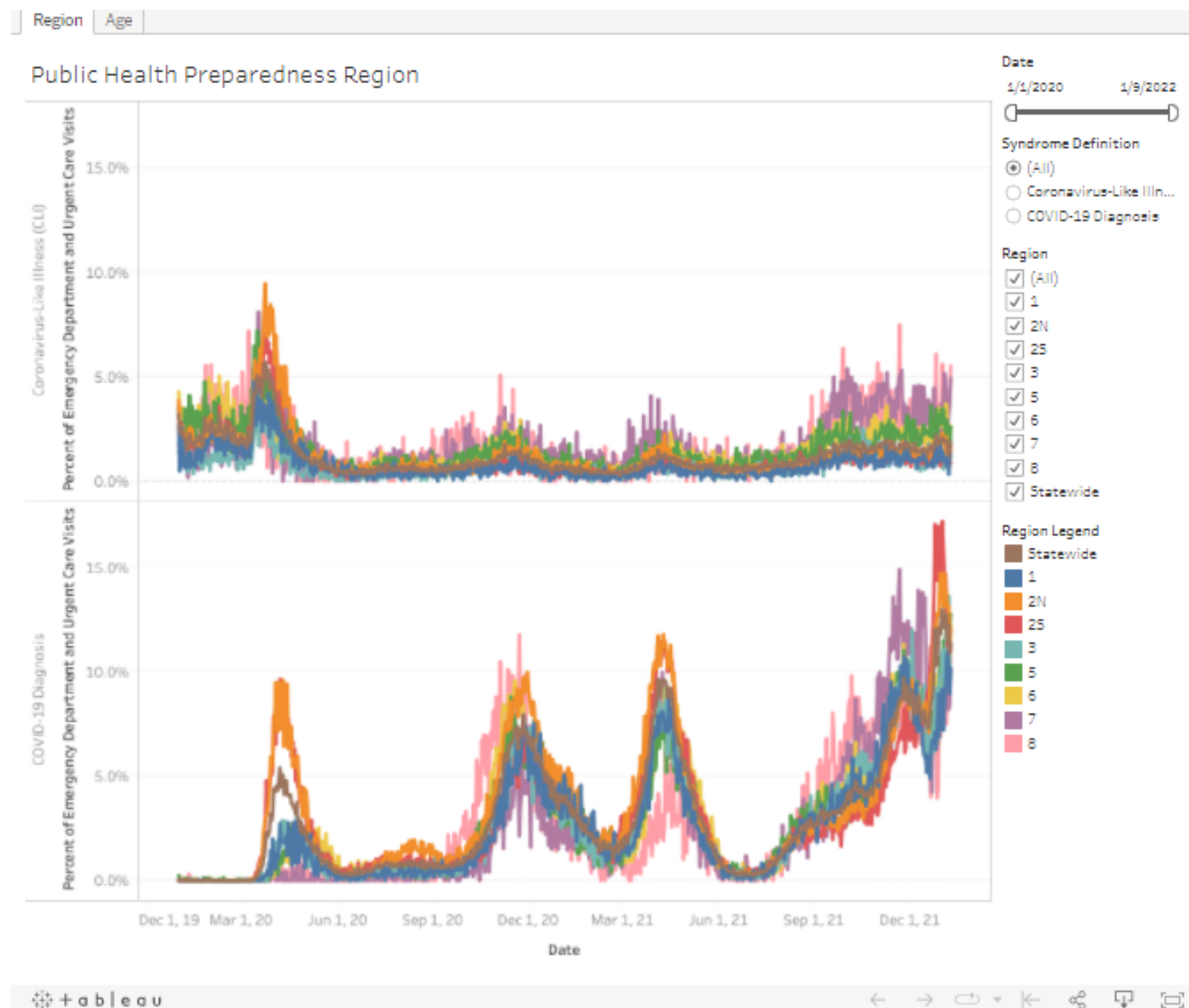
Coronavirus-Like Illness (CLI) symptoms: This query searches visit free-text (chief complaint, triage notes, and clinical impression) for fever or chills AND cough or shortness of breath or difficulty breathing.

Data Source: Michigan Syndromic Surveillance System and National Syndromic Surveillance Program, Michigan Department of Health and Human Services, Communicable Disease Division, Surveillance and Infectious Disease Epidemiology Section

COVID case and testing data will be posted three times a week on Mondays, Wednesdays and Fridays.

Note: Recent changes in healthcare seeking behavior, including increasing use of telemedicine and recommendations to limit emergency department (ED) visits to severe illness, as well as changes in ED triage practices and alternative COVID-19 testing sites, are impacting ED visits in Michigan. These changes affect the numbers of people and their reasons for seeking care in the Urgent Care and ED settings.

Data reported may change as visit information is received.





Region Age

Public Health Preparedness Region

Date

1/1/2020

1/9/2022



Syndrome Definition

 (All) Coronavirus-Like Illn... COVID-19 Diagnosis

Region

 (All) 1 2N 2S 3 5 6 7 8 Statewide

Region Legend

Statewide

1

2N

2S

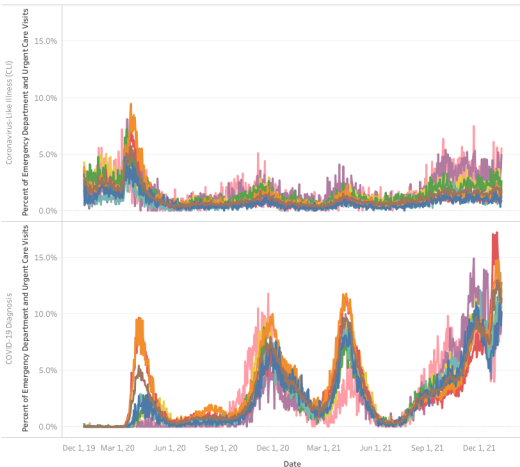
3

5

6

7

8



Region Age

Age Group

Date
 1/1/2020 1/9/2022

Syndrome Definition
 (All)
 Coronavirus-Like Illn...
 COVID-19 Diagnosis

Age Group
 (All)
 0-4 Years
 5-17 Years
 18-34 Years
 35-49 Years
 50-64 Years
 ≥ 65 Years

Age Group Legend
 0-4 Years
 5-17 Years
 18-34 Years
 35-49 Years
 50-64 Years
 ≥ 65 Years

