

Coronavirus

MI SAFE START ▾

CONTAIN COVID ▾

RESOURCES ▾

PRESS RELEASES

DONATE

VIDEO UPDATES

CORONAVIRUS / MICHIGAN DATA / CORONAVIRUS SYMPTOMS

Coronavirus Symptoms

Michigan Syndromic Surveillance - COVID-19

Syndromic Surveillance System data is obtained from approximately 216 facilities participating in syndromic surveillance (139 Emergency Department, 77 Urgent Care) across the State of Michigan.

DESCRIPTION OF THE QUERY

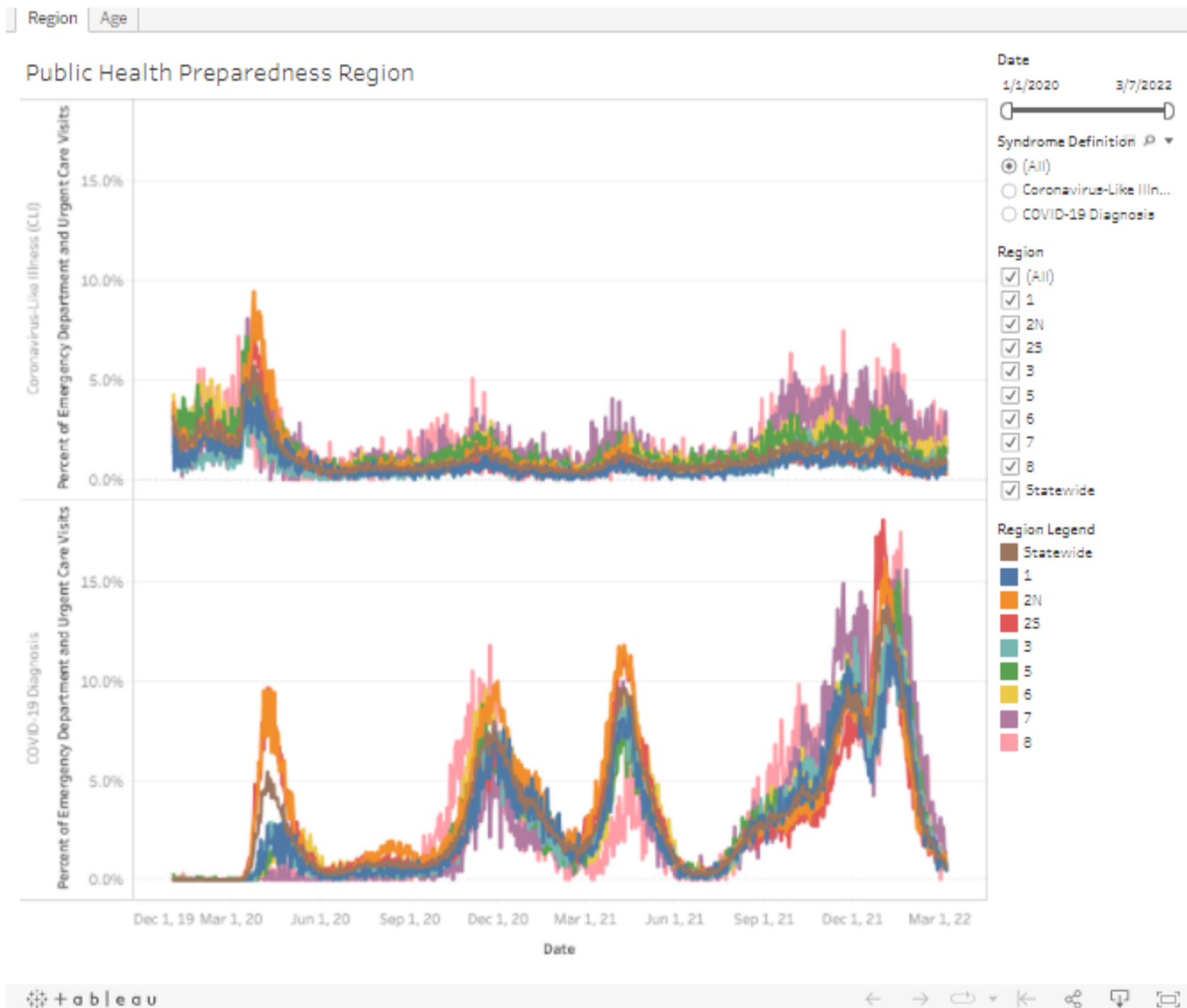
Coronavirus-Like Illness (CLI) symptoms: This query searches visit free-text (chief complaint, triage notes, and clinical impression) for fever or chills AND cough or shortness of breath or difficulty breathing.

Data Source: Michigan Syndromic Surveillance System and National Syndromic Surveillance Program, Michigan Department of Health and Human Services, Communicable Disease Division, Surveillance and Infectious Disease Epidemiology Section

COVID case and testing data will be posted two times a week. The intent is to refresh these data on Mondays and Thursdays unless otherwise noted.

Note: Recent changes in healthcare seeking behavior, including increasing use of telemedicine and recommendations to limit emergency department (ED) visits to severe illness, as well as changes in ED triage practices and alternative COVID-19 testing sites, are impacting ED visits in Michigan. These changes affect the numbers of people and their reasons for seeking care in the Urgent Care and ED settings.

Data reported may change as visit information is received.



Public Health Preparedness Region

Date

1/1/2020

3/7/2022

Syndrome Definition ρ

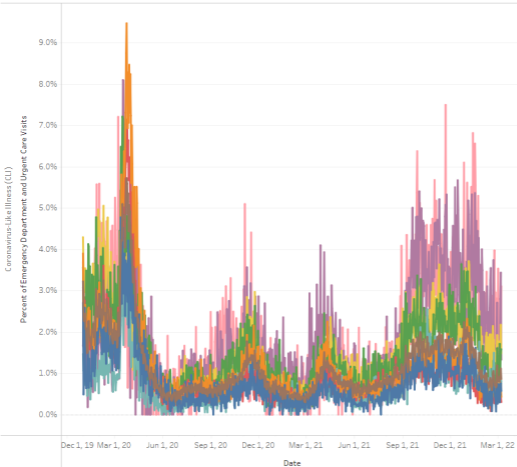
- (All)
- Coronavirus-Like Illn...
- COVID-19 Diagnosis

Region

- (All)
- 1
- 2N
- 2S
- 3
- 5
- 6
- 7
- 8
- Statewide

Region Legend

- Statewide
- 1
- 2N
- 2S
- 3
- 5
- 6
- 7
- 8



Public Health Preparedness Region

Date

1/1/2020

3/7/2022

Syndrome Definition ρ

- (All)
- Coronavirus-Like Illn...
- COVID-19 Diagnosis

Region

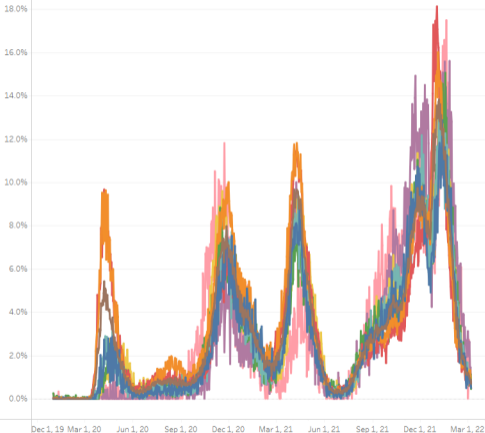
- (All)
- 1
- 2N
- 25
- 3
- 5
- 6
- 7
- 8
- Statewide

Region Legend

- Statewide
- 1
- 2N
- 25
- 3
- 5
- 6
- 7
- 8

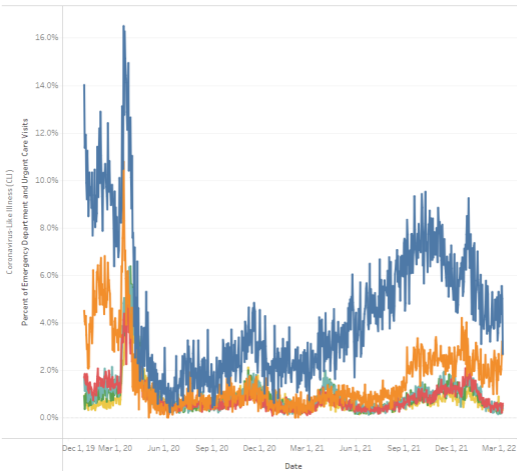
COVID-19 Diagnosis

Percent of Emergency Department and Urgent Care Visits



Date

Age Group



Date

1/1/2020

3/7/2022

Syndrome Definition ρ (All) Coronavirus-Like Illn... COVID-19 Diagnosis

Age Group

 (All) 0-4 Years 5-17 Years 18-34 Years 35-49 Years 50-64 Years ≥ 65 Years

Age Group Legend

0-4 Years

5-17 Years

18-34 Years

35-49 Years

50-64 Years

≥ 65 Years

Age Group

